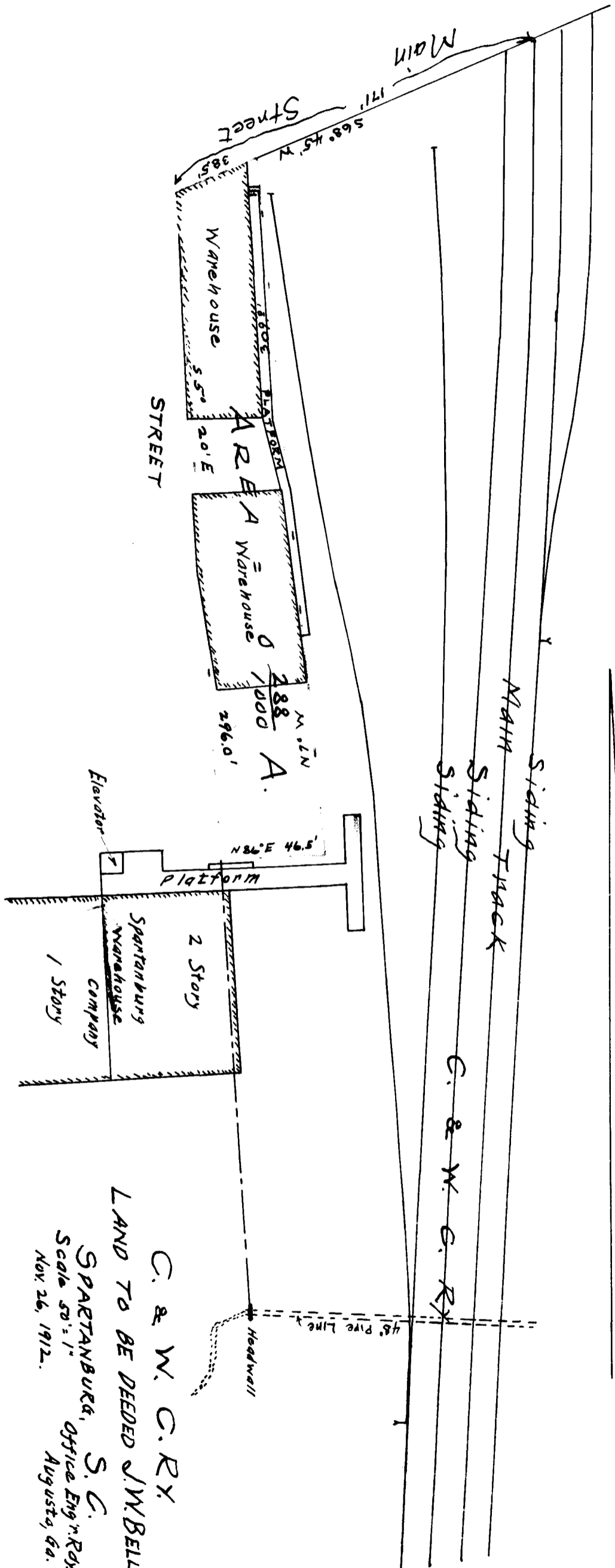


EX PARTE
J. W. BELL



note: See Deed Book 5-P page 37X

Registered, Booked & Examined July 8-1916.

C. & W. C. RY
LAND TO BE DEEDED J.W. BELL
SPARTANBURG, S. C.
Scale 50' = 1"
Nov 26, 1912.
Office Eng'r RY
Augusta, Ga.