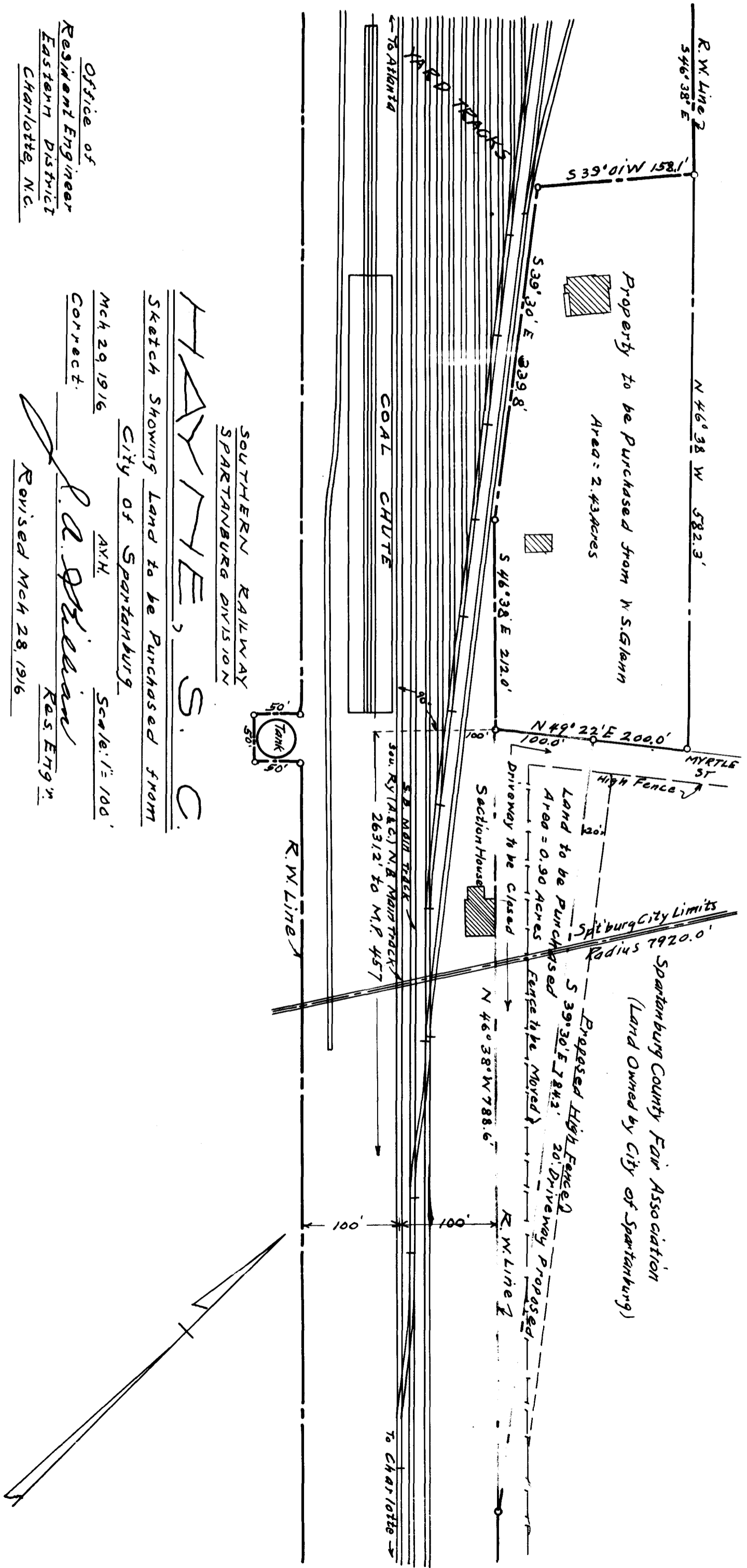


EXPARTER
SOUTHERN RY. CO.

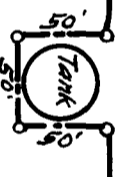
Office of
Resident Engineer
Eastern District
Charlotte, N.C.

HAYNIE, S. C.
Sketch Showing Land to be Purchased from
City of Spartanburg
Mch 29 1916
Correct.
L. A. Skelton
R.A.S. Eng'g.
Revised Mch 28, 1916

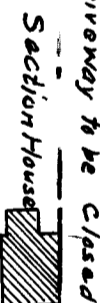
Note: See Deed Book "5-P" page "338"
Registered, Certified & Examined June 16-1916



SOUTHERN RAILWAY
SPARTANBURG DIVISION



R.W. Line 1



Section House

High Fence

Spartanburg County Fair Association
(Land Owned by City of Spartanburg)

Spartanburg City Limits
Radius 7920.0'

Proposed High Fenced
S 39° 30' E 784.2' 20' Driveway Proposed

N 46° 38' W 788.6'

R.W. Line 2

To Charlotte