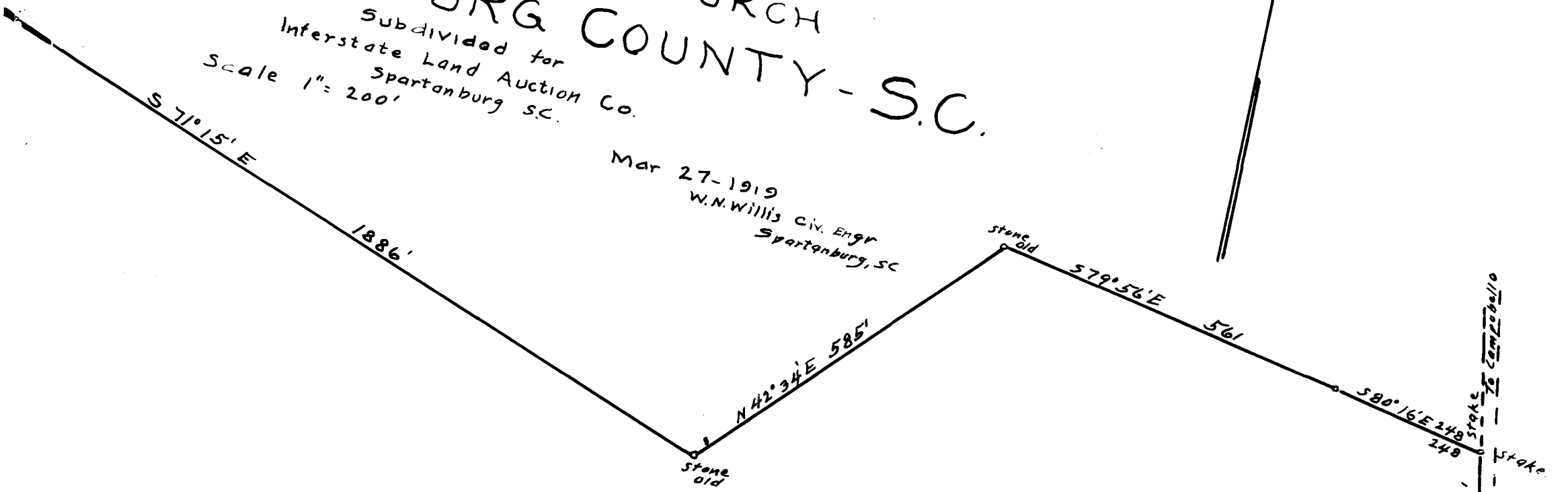


R.M. RECTOR PLACE
 NEAR FRIENDSHIP CHURCH
 SPARTANBURG COUNTY - S.C.

Subdivided for
 Interstate Land Auction Co.
 Spartanburg S.C.
 Scale 1" = 200'

Mar 27-1919
 W.N. Willis CIV. ENGR
 Spartanburg, SC



LOT No. 1
 79.5 Ac

