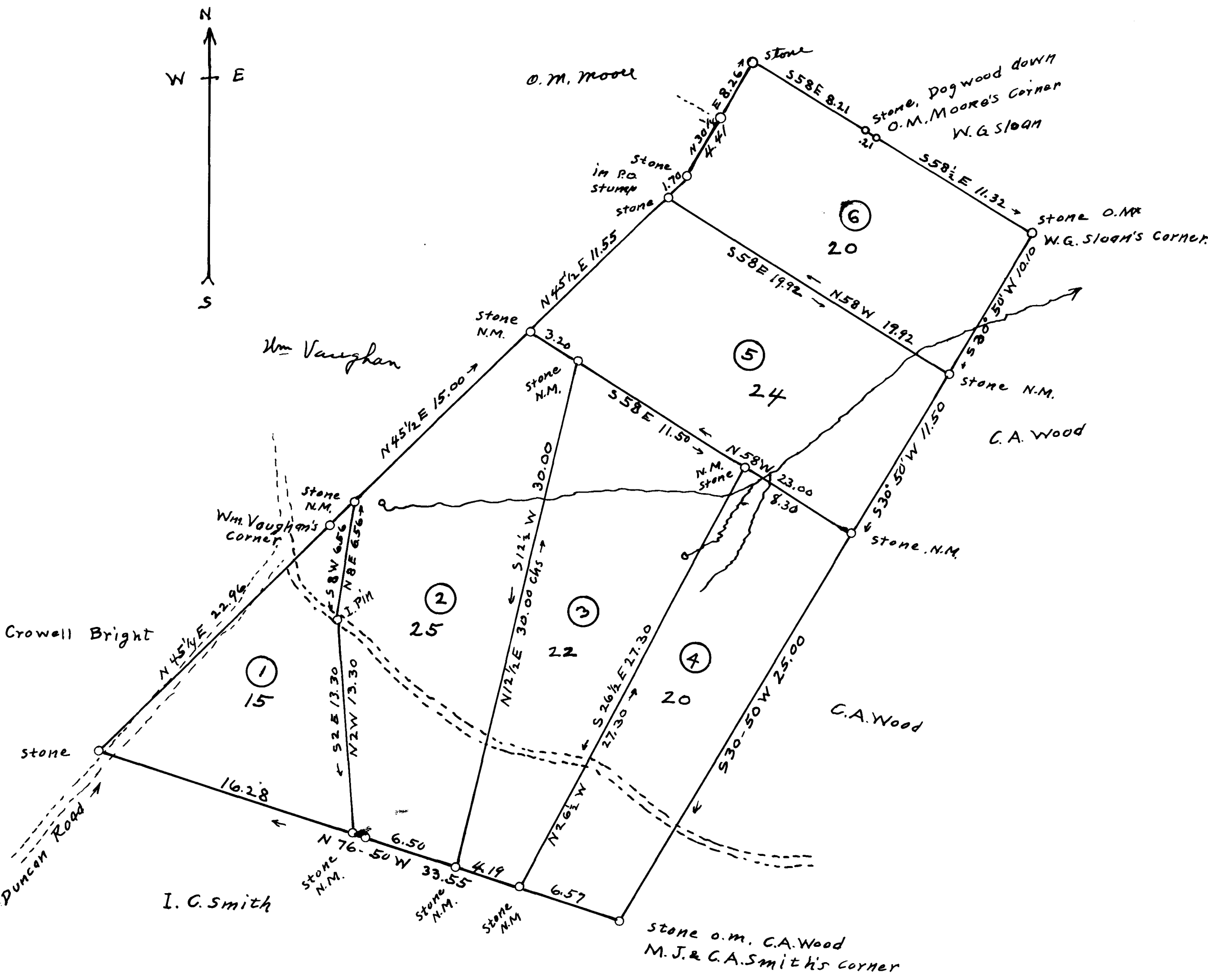


EX PARTE
WYLEY VAUGHAN ESTATE

4



Plat of subdivisions Wyley Vaughan Estd.
 Spartanburg County, Beech Springs Tp., S. C.
 Surveyed by W.A. Christopher, March 26th 1917
 Scale 1 in. = 60 ch.

Registered, certified & Examined April 3rd 1919