

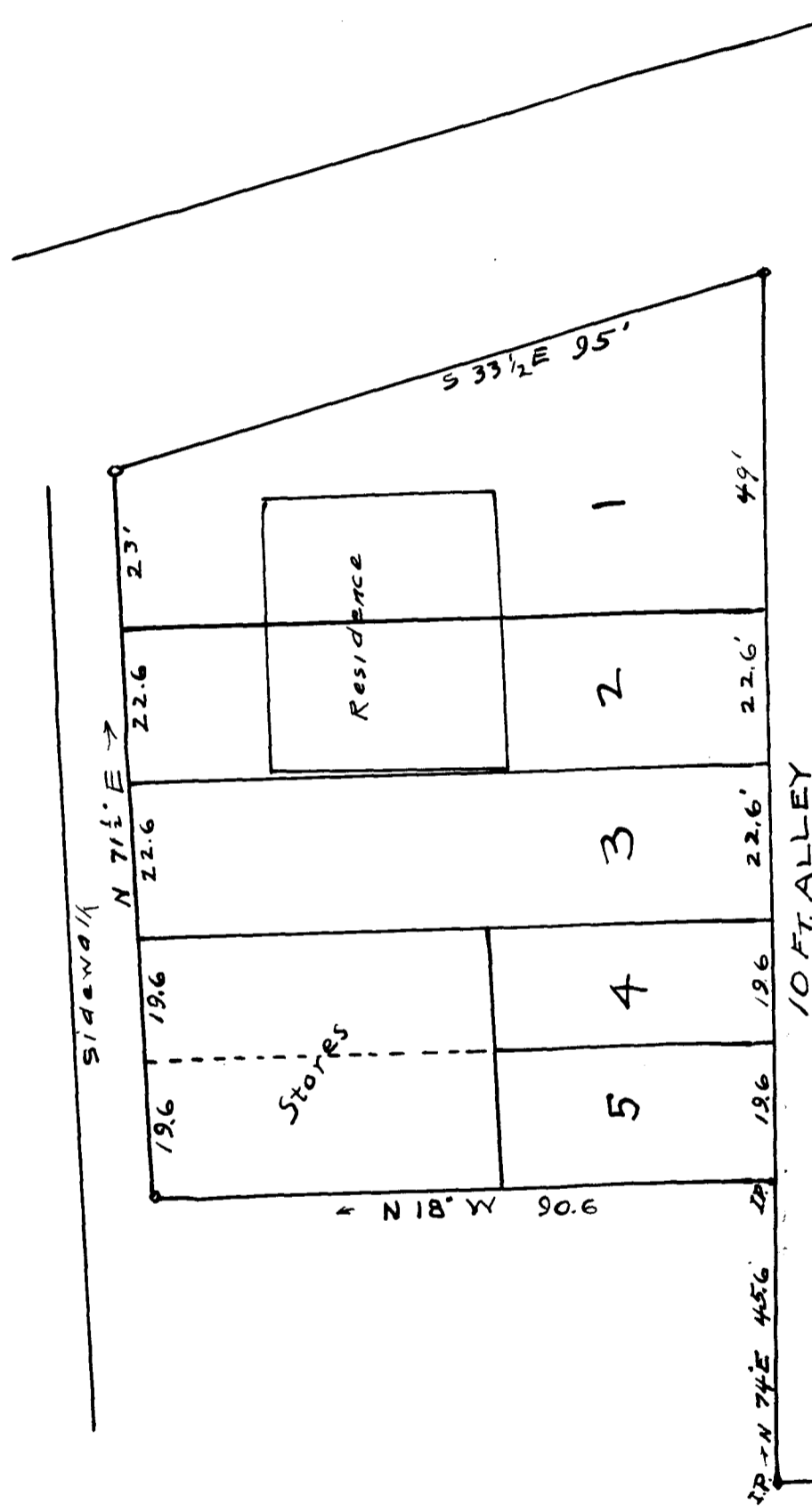
EX PARTE
E.E. AND J.C. BROWN

BROWN BROS. PROPERTY IN THE TOWN OF LANDRUM SPARTANBURG CO.- S.C

Subdivided for
INTERSTATE LAND AUCTION CO
SPARTANBURG S.C

Surveyed by L.P. Epton
Scale 1" = 25' Oct. 11-1917
Traced by
W.N. Willis - C.E.
Spar. S.C.

RUTHERFORD ST.



Registered, Certified & Examined May 12, 1919