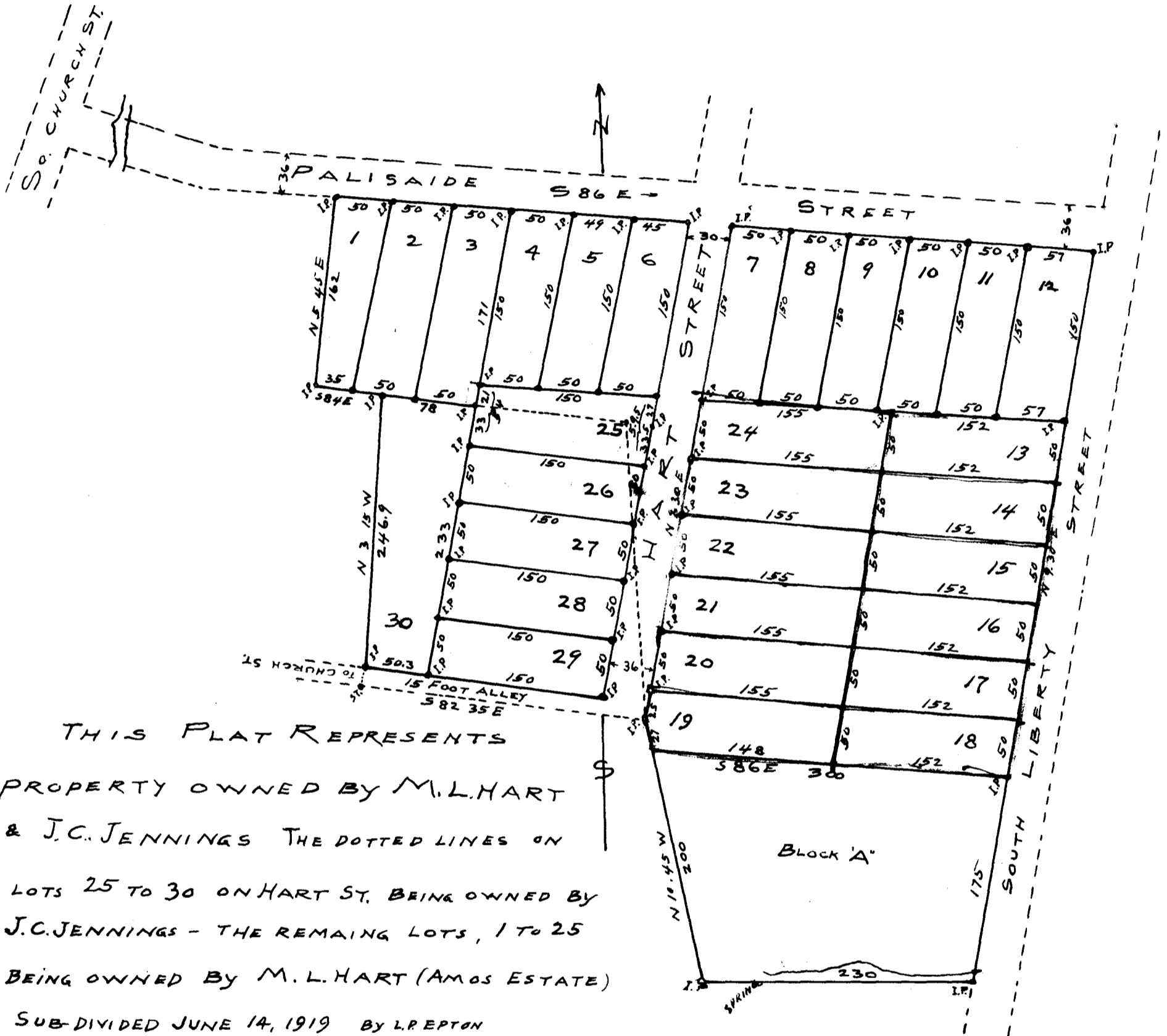


EX PARTE

J. C. JENNINGS & M. L. HART



THIS PLAT REPRESENTS
 PROPERTY OWNED BY M. L. HART
 & J. C. JENNINGS THE DOTTED LINES ON
 LOTS 25 TO 30 ON HART ST. BEING OWNED BY
 J. C. JENNINGS - THE REMAINING LOTS, 1 TO 25
 BEING OWNED BY M. L. HART (AMOS ESTATE)
 SUB-DIVIDED JUNE 14, 1919 BY L. REPTON
 SCALE 100' = 1" SPARTANBURG, S. C.

Registered, Certified + Examined June 25, 1919