

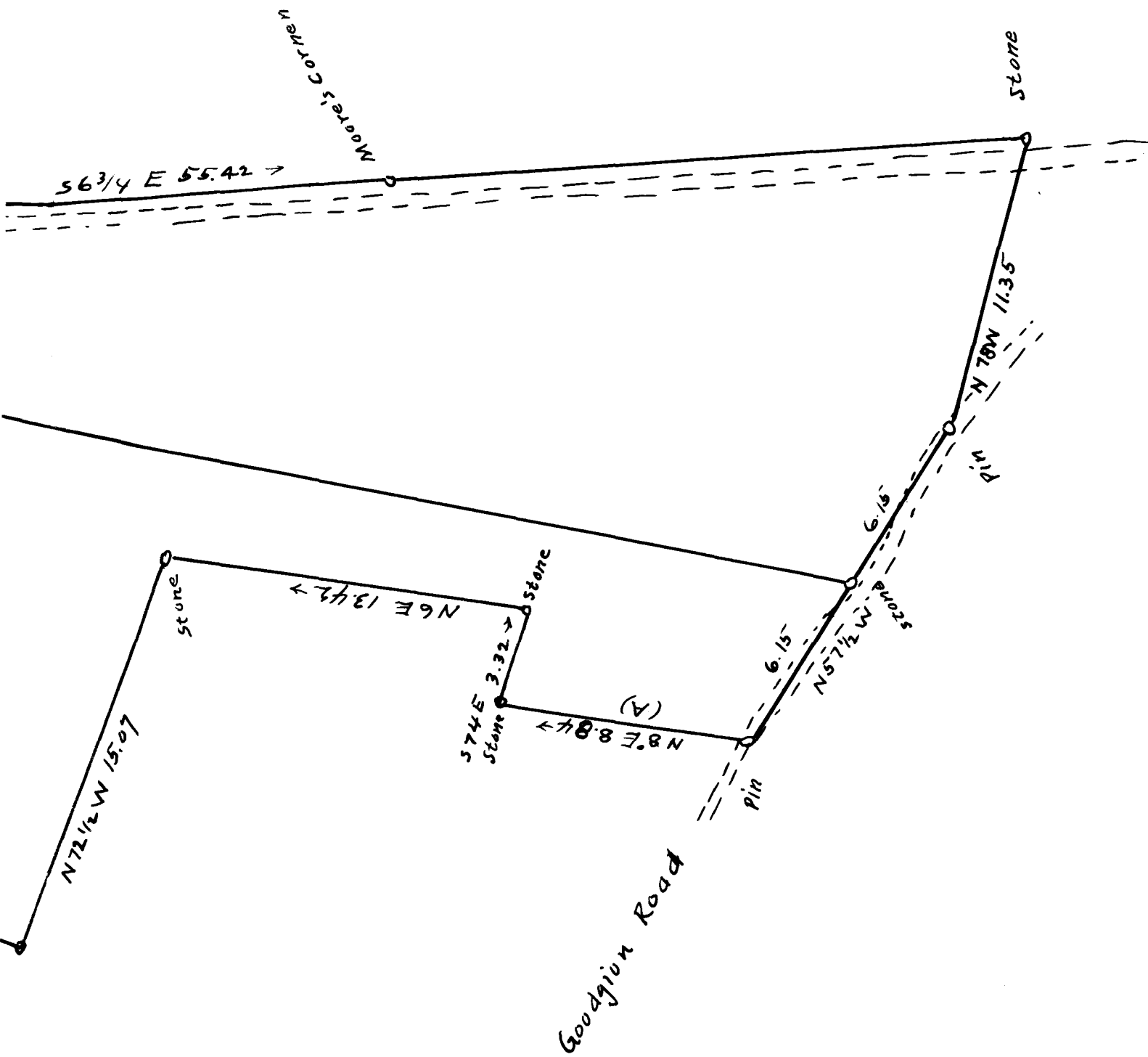
Property of

M. L. Eubank and — Butler  
 Or the — Logan Est. Lot 1 and 2

Lot No. 2 includes Mrs — Butler's 54 1/4 acres  
 as shown by red lines. yellow lines show the  
 J. H. James estate. Lots 3, 4 + 3a = 1/3 of lot 2 or 54 1/4 ac.

State of South Carolina, County of Spartanburg  
 Surveyed by H. A. Christopher, Dec. 9 + 10 - 18, Jan 10 - 13 + 14<sup>th</sup> 1919  
 Scale 1 in = 5 chs.

Note :- There is 326.16 acres in whole tract, 162.08 in each half i.e. Lot 1 + 2.  
 Lot 2 does not include - acres in lot 5  
 Note: Lines "A" + corners set by consent of owners joining land.



Registered, certified & Examined August 11, 1919.