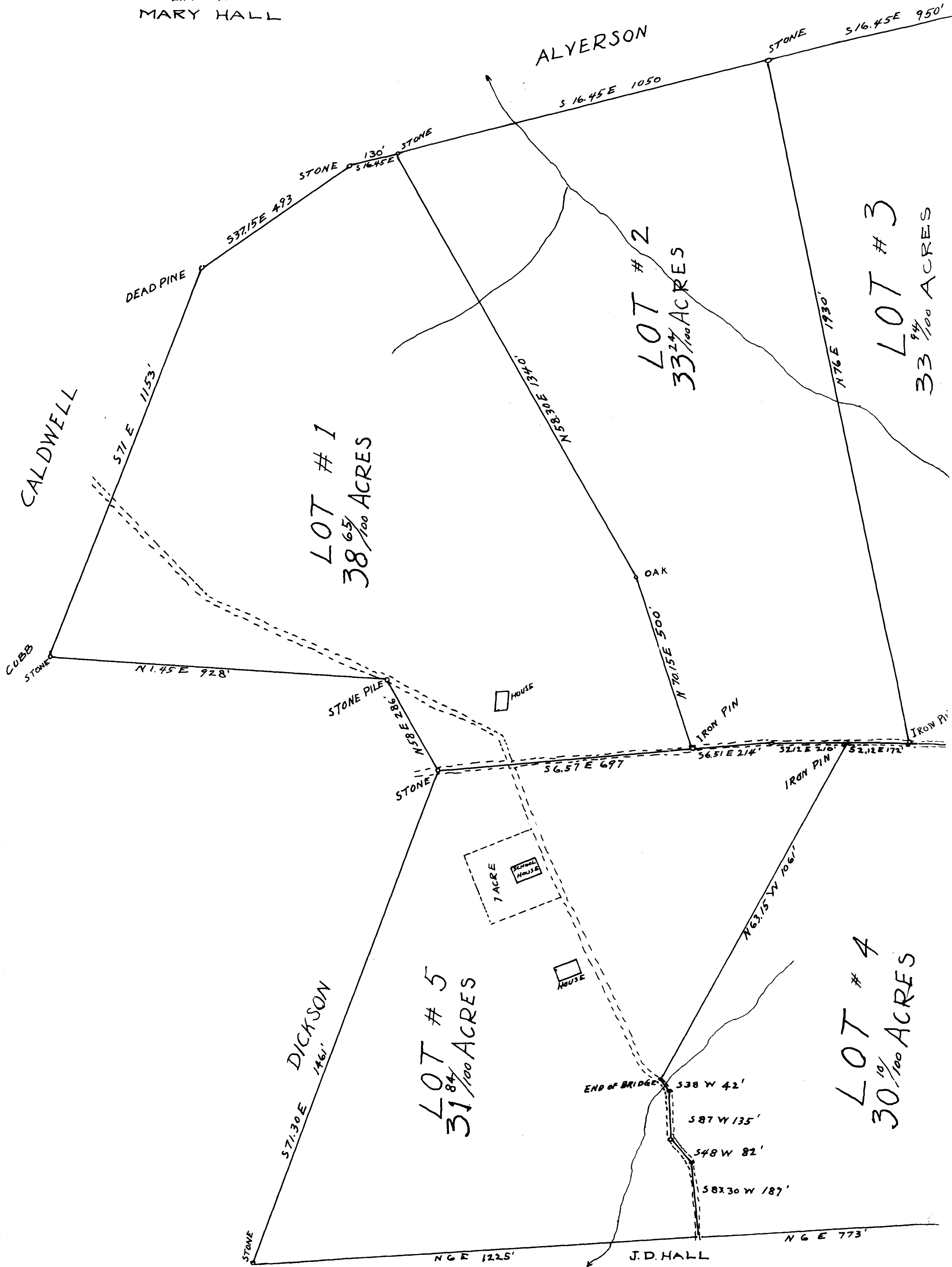


EX PARTE
MARY HALL



CALDWELL

ALYERSON

COBB
STONE

DICKSON

J.D. HALL

LOT # 1
38⁶⁵/₁₀₀ ACRES

LOT # 2
33²⁴/₁₀₀ ACRES

LOT # 3
33⁹⁴/₁₀₀ ACRES

LOT # 5
31⁸⁴/₁₀₀ ACRES

LOT # 4
30¹⁰/₁₀₀ ACRES

S 71 E 1153'

DEAD PINE

S 37.15 E 493

STONE 130' STONE
S 16.45 E

S 16.45 E 1050

STONE S 16.45 E 950'

S 104 E 1303.85 N

OAK

N 70.15 E 500'

N 76 E 1930'

N 1.45 E 928'

STONE PILE N 58 E 282'

HOUSE

STONE

S 6.57 E 697

IRON PIN

S 6.51 E 214'

S 2.12 E 216'

IRON PIN

S 2.12 E 172'

IRON PIN

7 ACRE
SCHOOL HOUSE

HOUSE

N 63.15 W 1061'

END OF BRIDGE S 38 W 42'

S 87 W 135'

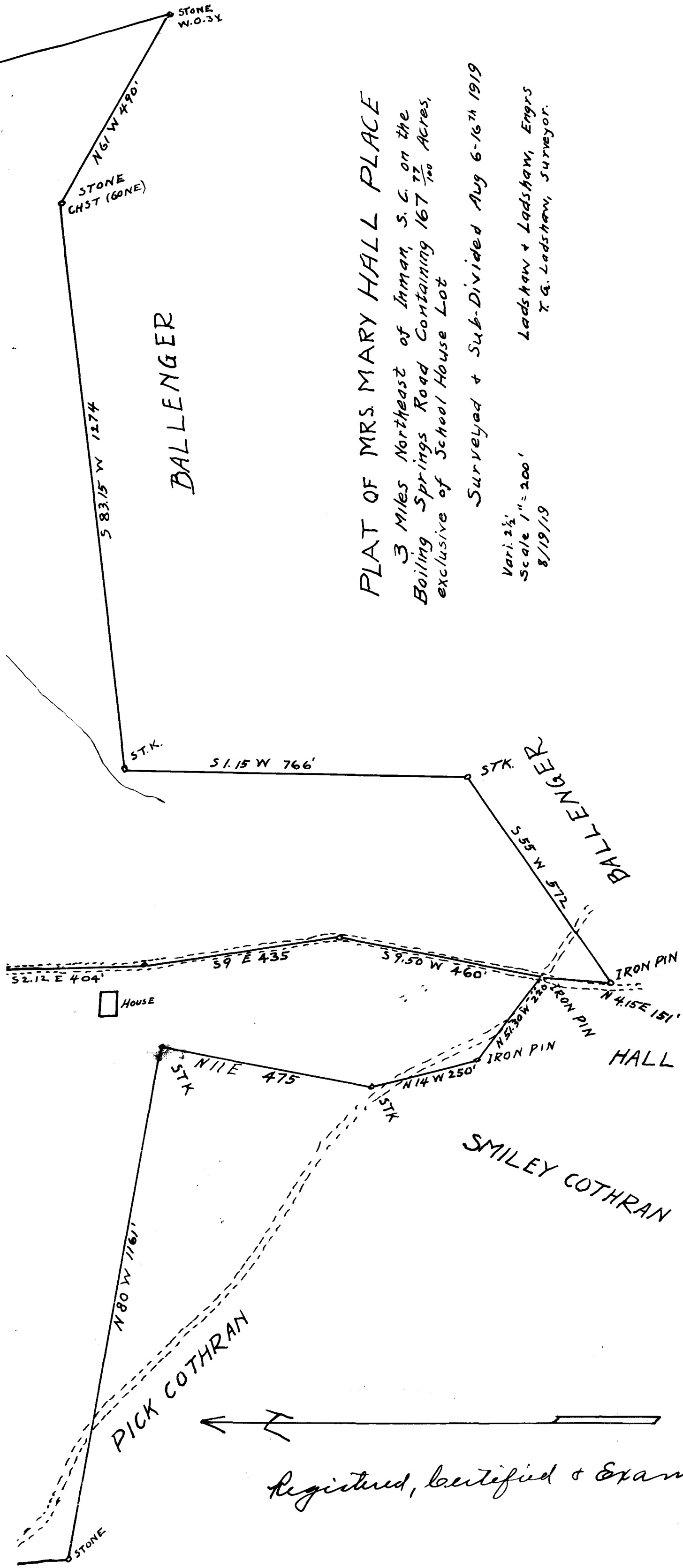
S 48 W 82'

S 83.30 W 187'

N 6 E 1225'

N 6 E 773'

28



PLAT OF MRS. MARY HALL PLACE
 3 Miles Northeast of Inman, S. C. on the
 Boiling Springs Road Containing 167 $\frac{77}{100}$ Acres,
 exclusive of School House Lot

Surveyed & Sub-Divided Aug 6-16th 1919
 Vari. 2 1/2'
 Scale 1" = 200'
 8/19/19
 Ladshaw & Ladshaw, Engrs
 T. G. Ladshaw, Surveyor.

Registered, certified & Examined Sept. 13, 1919