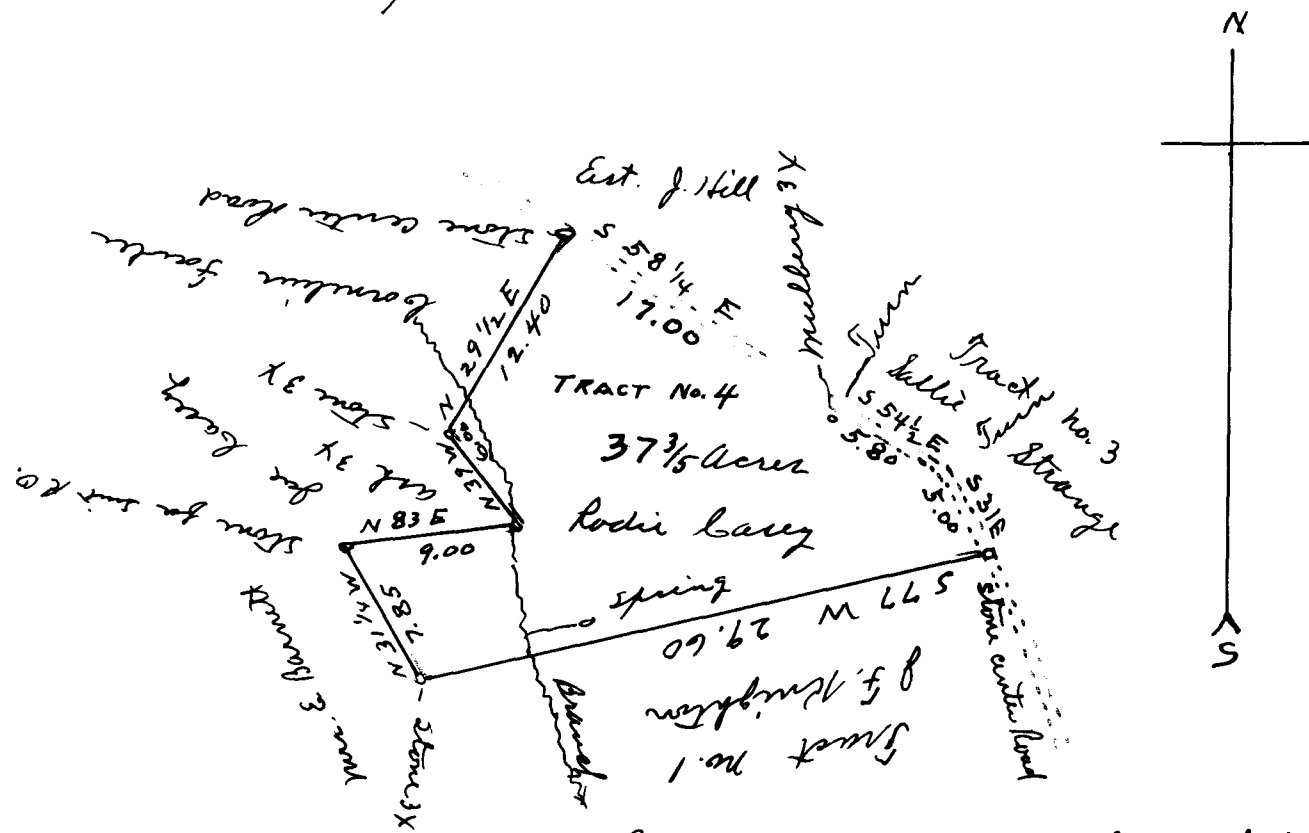


EX PARTE
RODIE CASEY

Scale 10 ch per inch.



State of South Carolina
County of Spartanburg

By the request of Zechariah Knighton
I have surveyed and divided a tract
of land into four tracts. The above plat
represents tract No. 4, and designated to
Mrs Rodie Casey. It has such shape and
boundaries as are indicated and containing
thirty seven & three fifths (37 3/5) acres, more or
less. Surveyed March 6, 1894 S. H. Anderson
Surveyor

Registered, Certified & Examined Sept 9, 1919