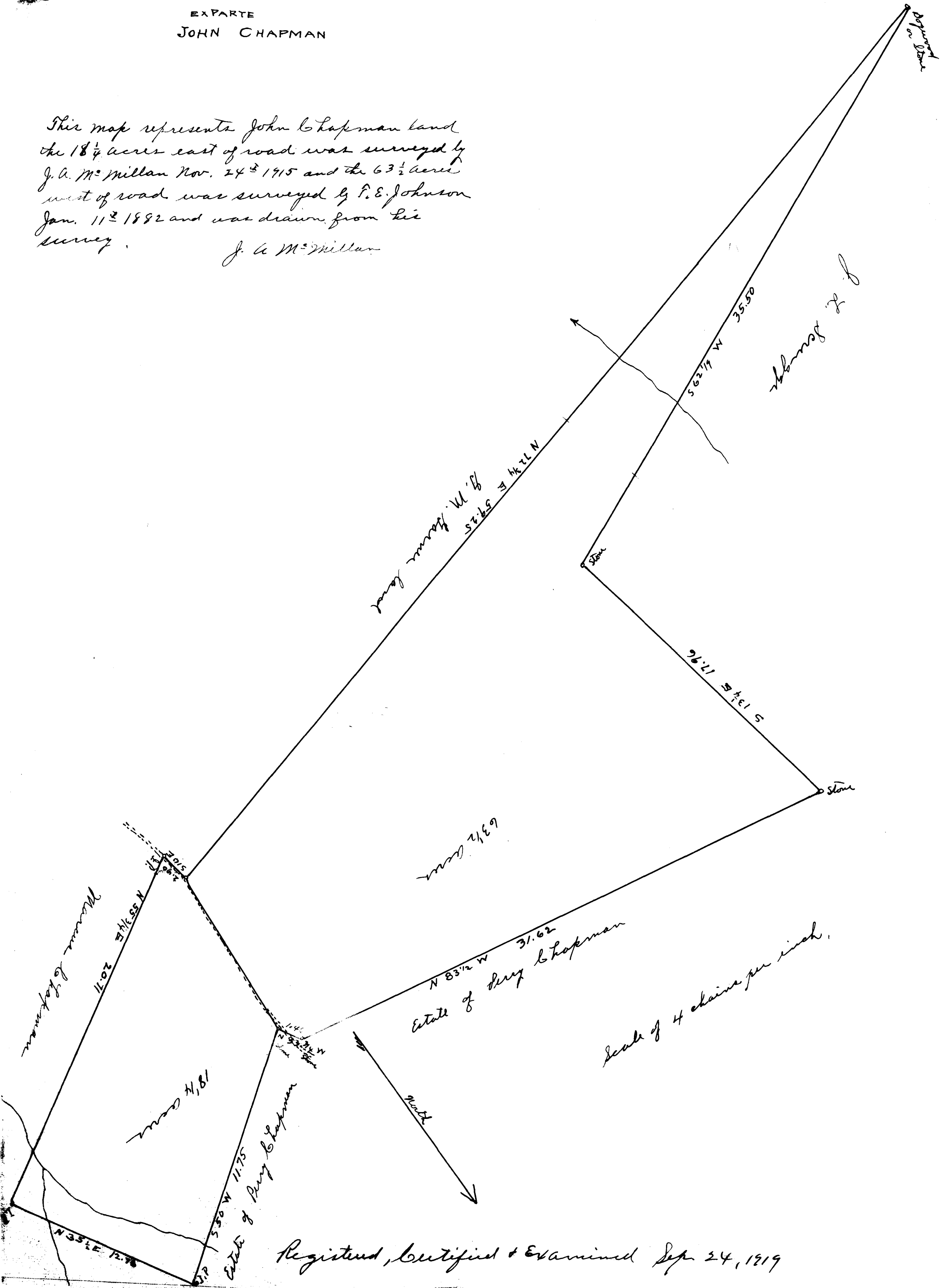


EX PARTE
JOHN CHAPMAN

This map represents John Chapman land
the 18 1/4 acres east of road was surveyed by
J. A. McMillan Nov. 24th 1915 and the 63 1/2 acres
west of road was surveyed by F. E. Johnson
Jan. 11th 1882 and was drawn from his
survey.

J. A. McMillan



Registered, Certified & Examined Sep. 24, 1919