

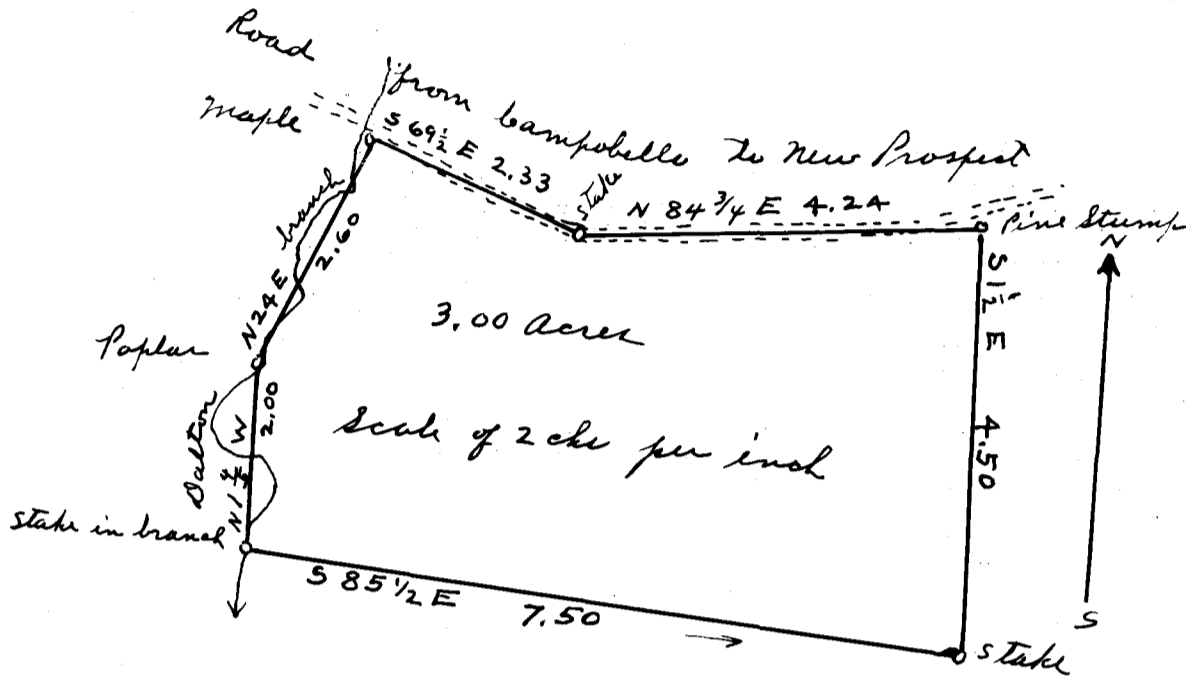
44

EX PARTE
VICTOR SCHOOL DISTRICT NO. 65

Foster et al, Trustees

- Vs -

Dorman



State of South Carolina }
Spartanburg County }

The above plat correctly represents a lot of three acres of land surveyed for off for the Victor consolidated School, It is situated in Spartanburg County, State of South Carolina and lies on the South side of road leading leading from Campobello to New Prospect and lies mostly on the East side of the Dalton branch waters of South Pacolet River, This land is surveyed out of the Estate of George W. Dorman, dec'd. and is surrounded on all sides by said lands.

Surveyed by me June 24th 1918

M. E. Johnson.

Registered, Certified & Examined Sep 29, 1919