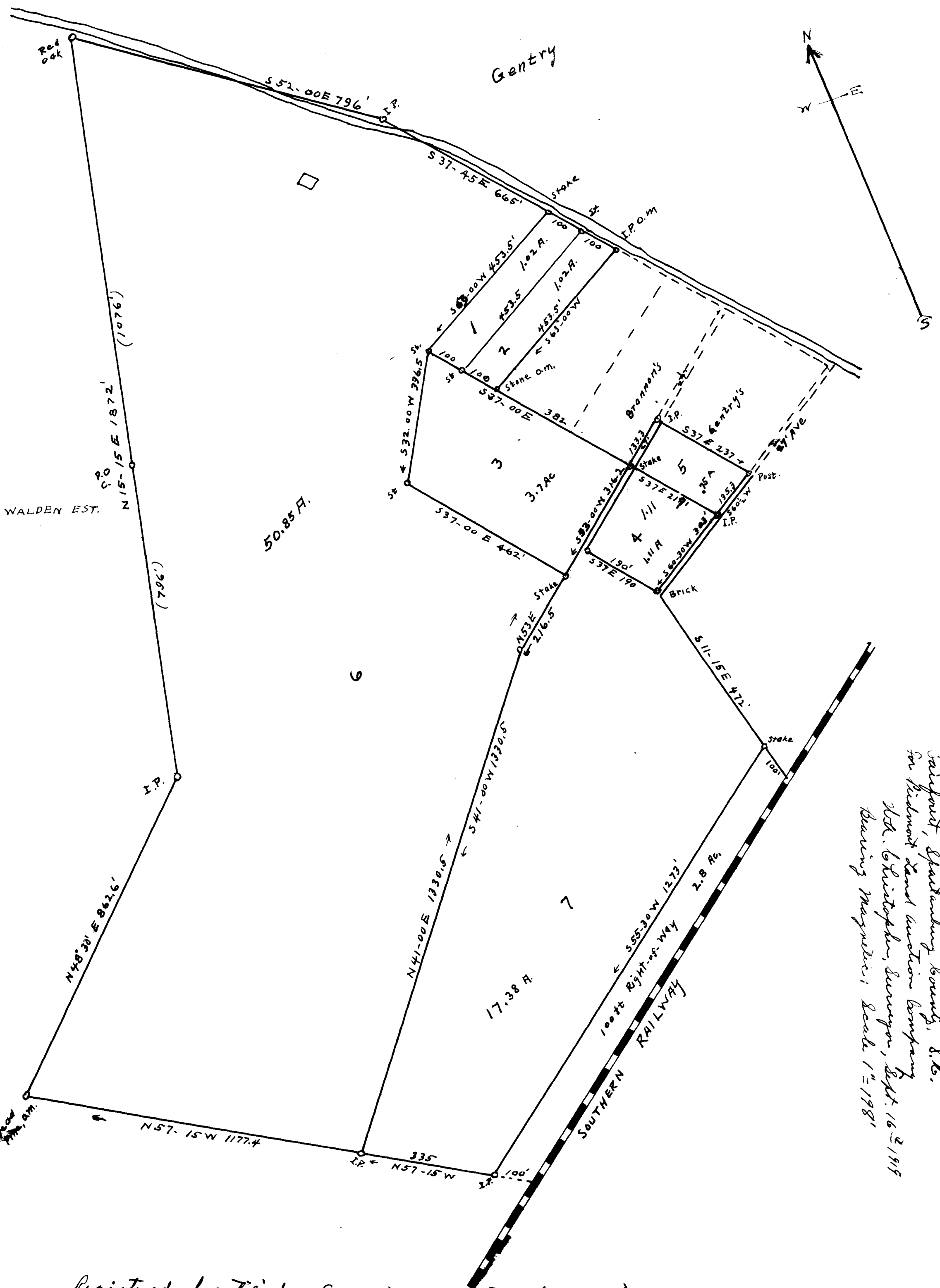


46

EX PARTE
J. R. AIKEN



Subdivision of J. R. Aiken lands
Fairport, Spaulding County, S.D.
for Piedmont Land Auction Company
W.A. Christopherson, Surveyor, Sept. 16th 1919
Bearing Magnetic; Scale 1" = 198'

Registered, Certified & Examined September 29th 1919