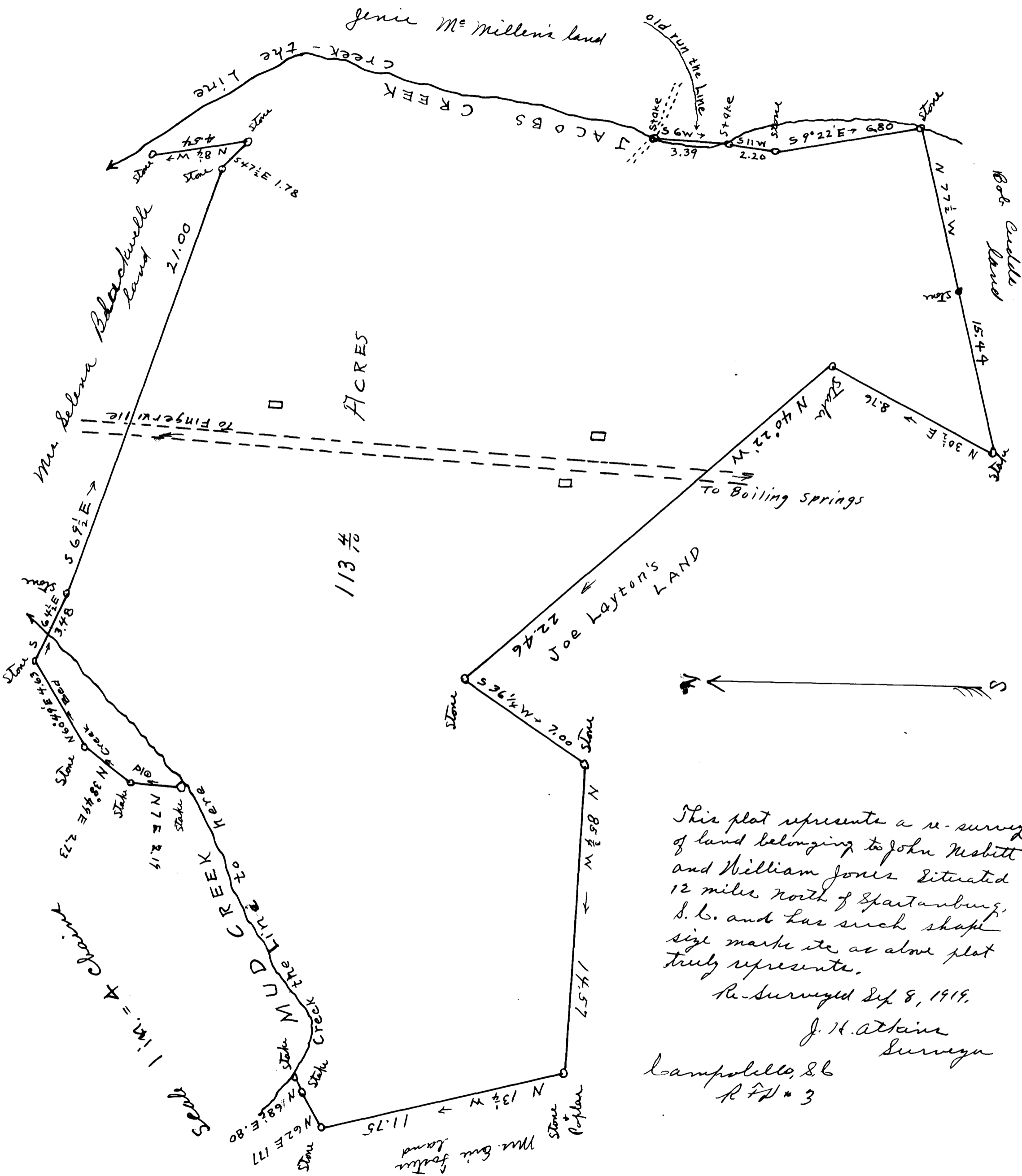


EX PARTE  
JOHN NESBITT & WM JONES



This plat represents a re-survey of land belonging to John Nesbitt and William Jones situated 12 miles north of Spartanburg, S. C. and has such shape size marks etc as above plat truly represents.

Re-surveyed Sep 8, 1919.

J. H. Atkins  
Surveyor

Campbell, S. C.  
R. F. # 3

Registered, Certified & Examined Oct 27, 1919