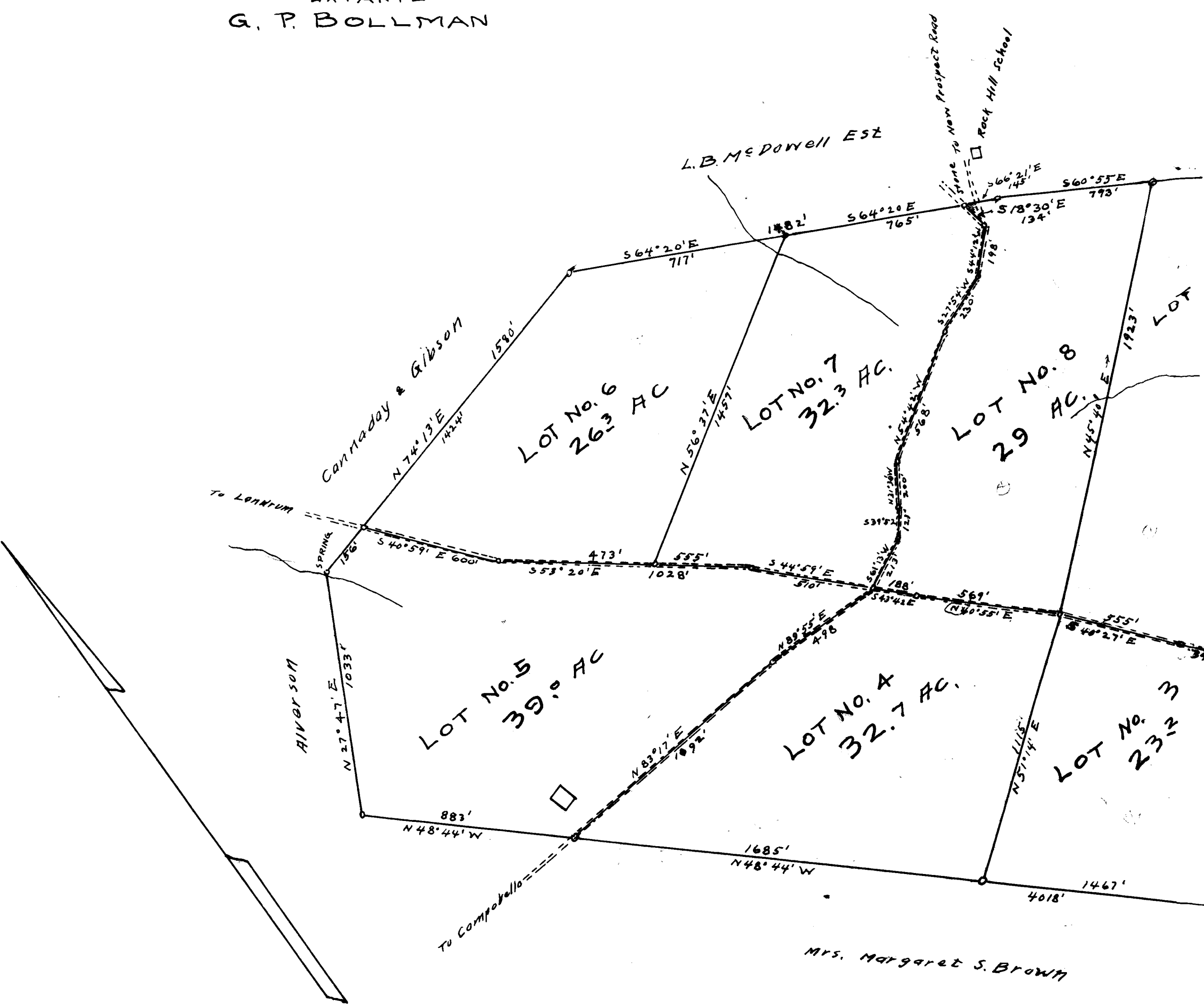


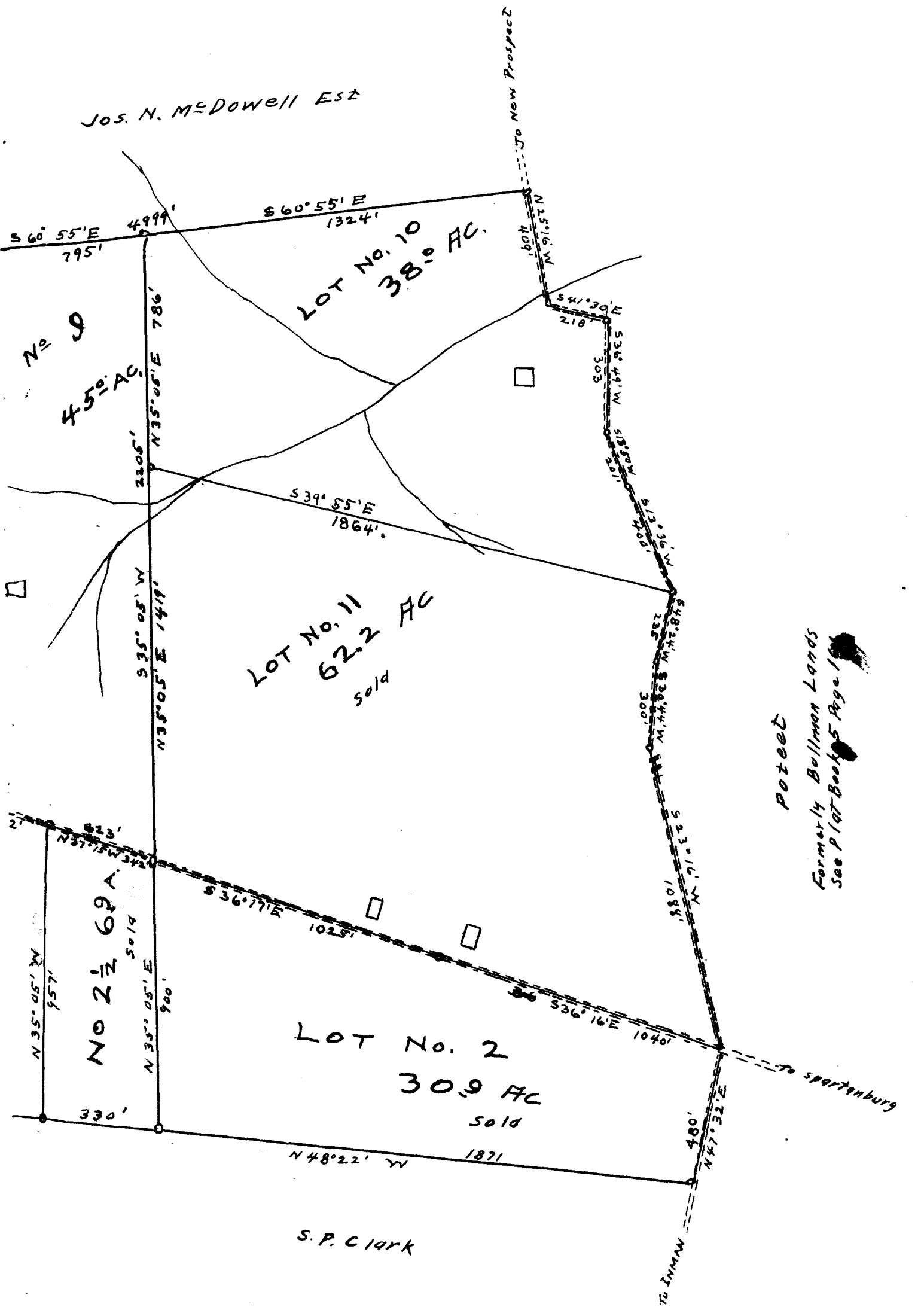
157

EX PARTE
G. P. BOLLMAN



G. P. BOLLMAN LANDS
 Near
INMAN
SPARTANBURG CO., S.C.
 Revised & Relocated Oct 20-1919
 INTERSTATE LAND AUCTION CO
 Spartanburg, SC
 N. N. Willis Civ Engr
 Spartanburg, S.C.
 Scale 1" = 400'

57



Poteet
Formerly Bullman Lands
See Plat Book 5 Page 1

Registered, Certified & Examined Oct 30, 1919