

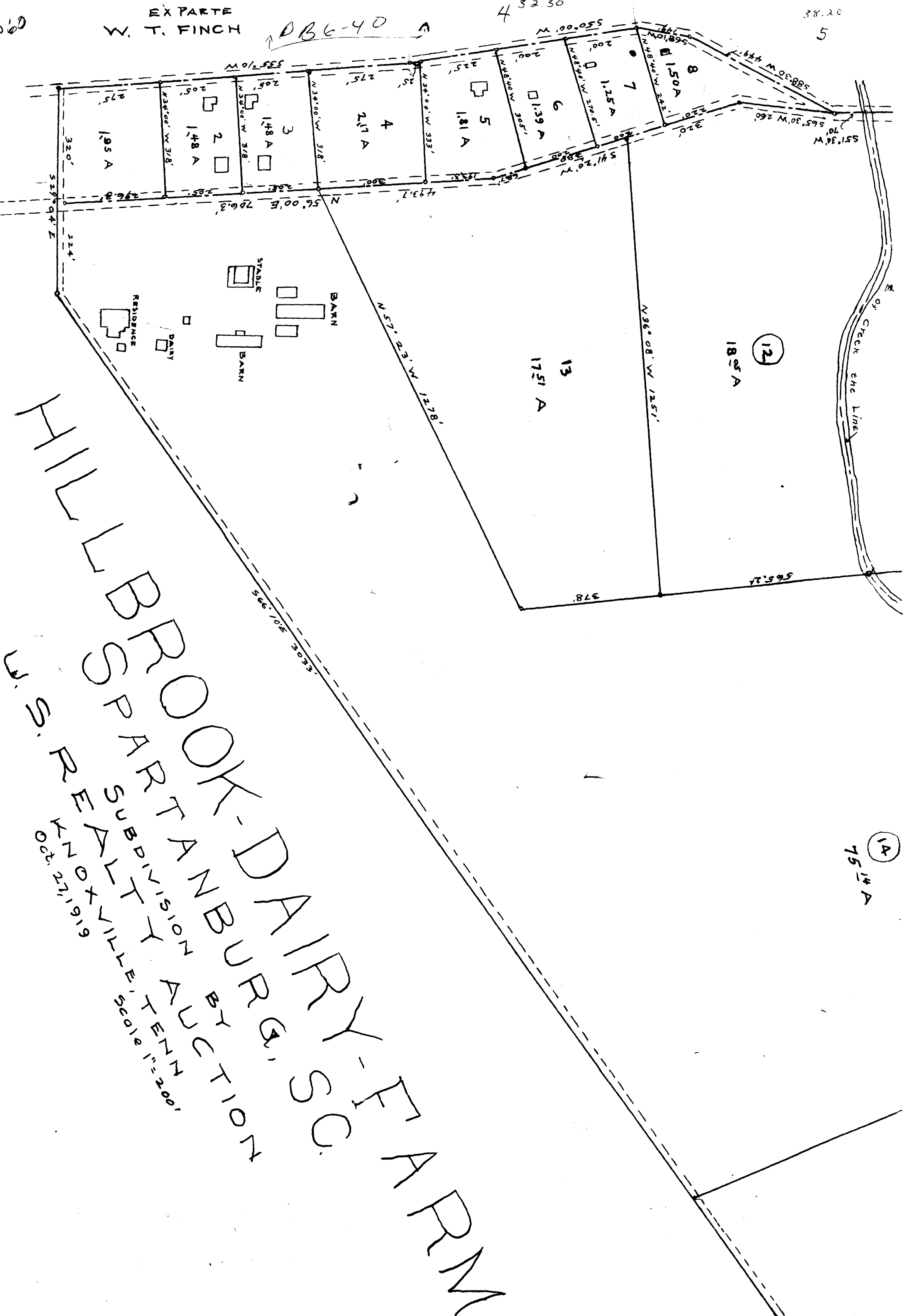
EX PARTE  
W. T. FINCH

DB6-40

4 32.30

38.20

5



HILL  
BROOK-DAIRY-FARM  
BROOK-DAIRY-FARM  
SUBDIVISION  
BY CUTLIER  
J. S. REYNOLDS  
OCT. 21, 1919

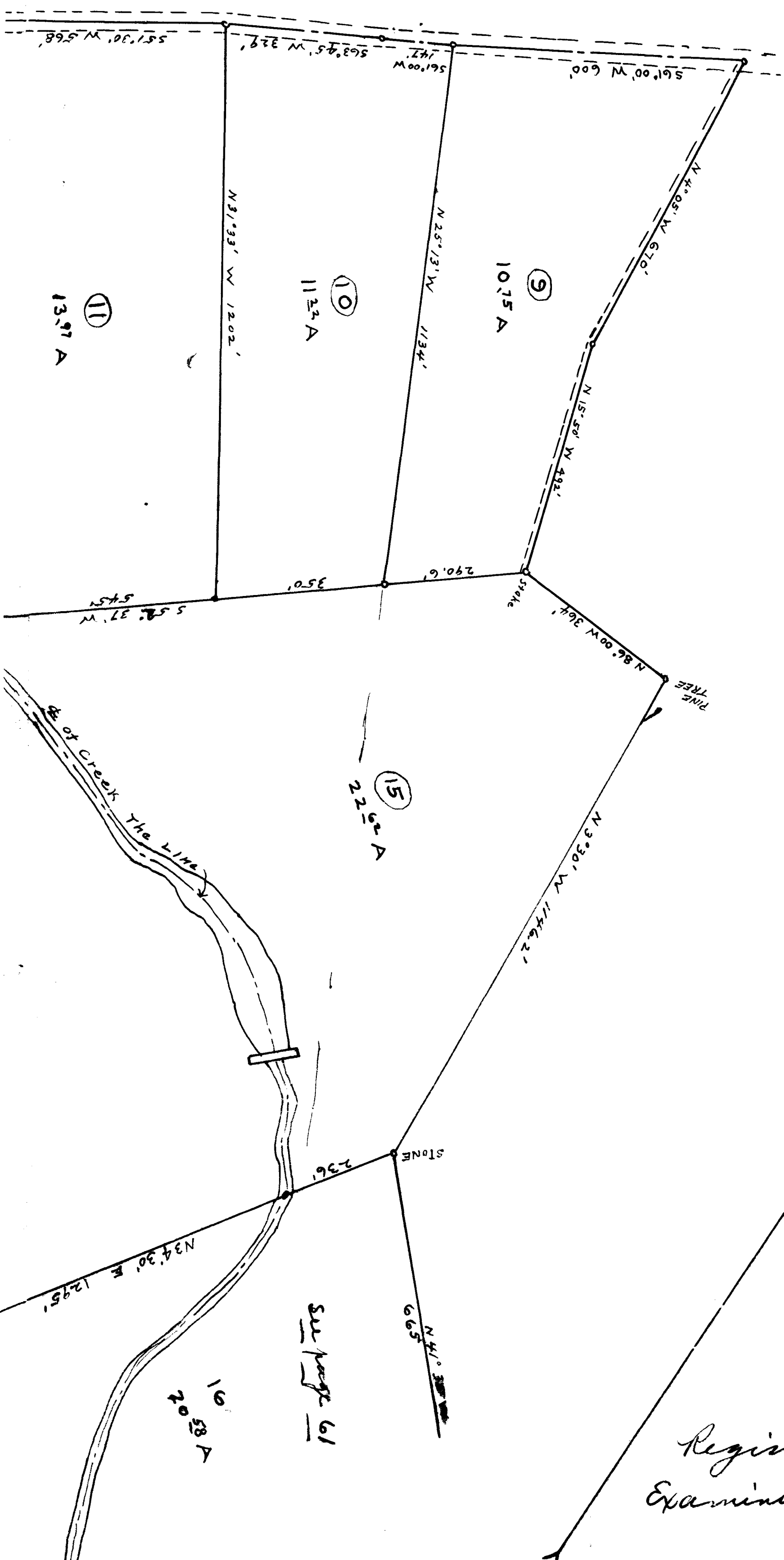
12

18.05 A

13  
17.51 A

14

75.14 A



Note:  
 See page 61 for  
 Lots 16, 17, 18 + 19

Registered, certified &  
 Examined Nov. 6, 1919