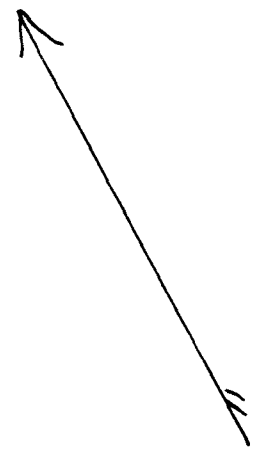


61

EX PARTE
W. T. FINCH
SEE PAGE 60

STONE



14
754 A

See page 60

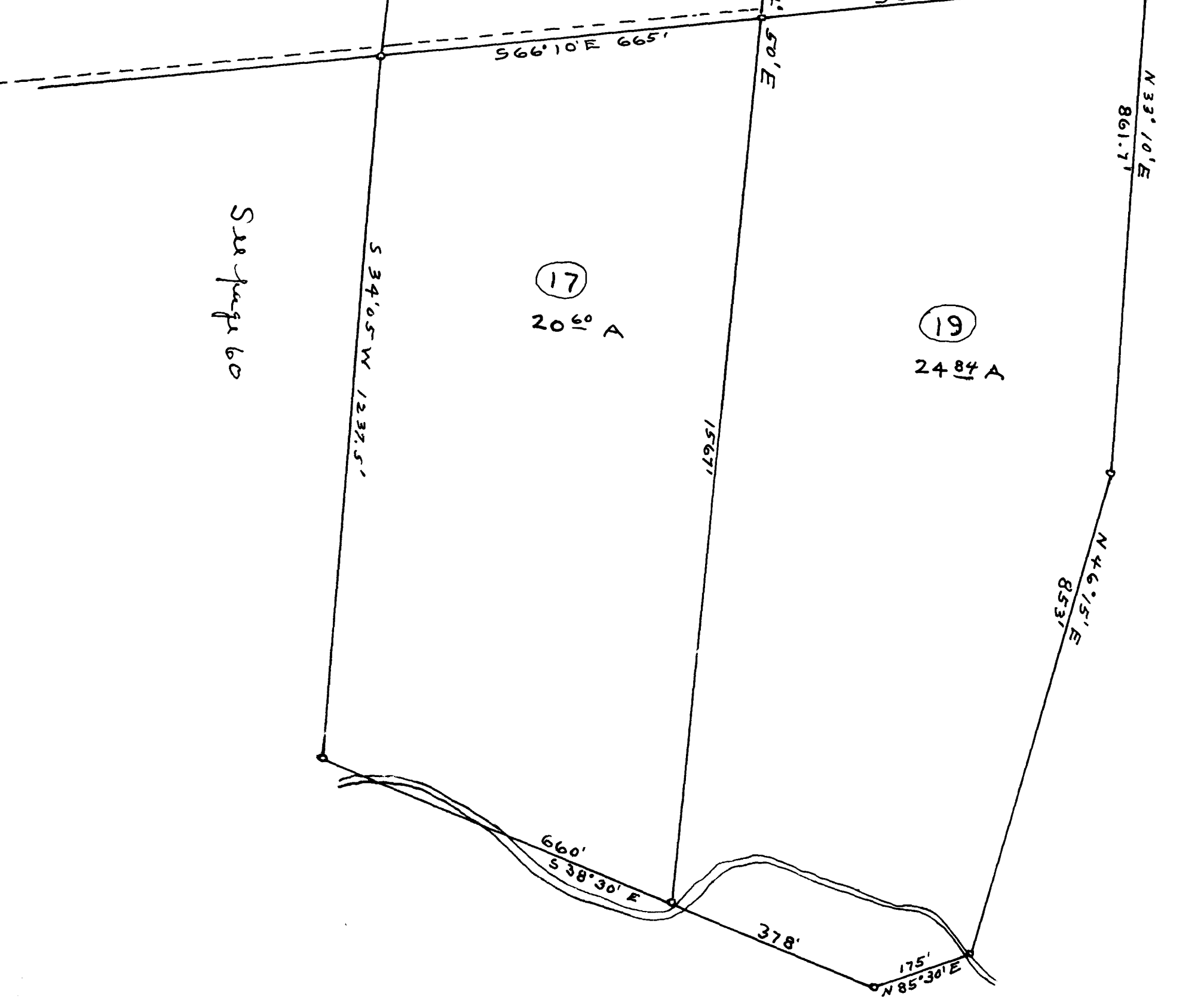
(16)
2058 A

(18)
1649 A

See page 60

(17)
2060 A

(19)
2484 A



236'
N 34° 30' E 1295'

665'
N 41° 35' W

657'

N 33° 10' E 962'

1240'

N 34° 50' E

S 66° 10' E 678'

N 33° 10' E 861.7'

S 66° 10' E 665'

S 34° 05' W 1237.5'

1567'

N 46° 15' E 853'

660'
S 38° 30' E

378'

175'
N 85° 30' E