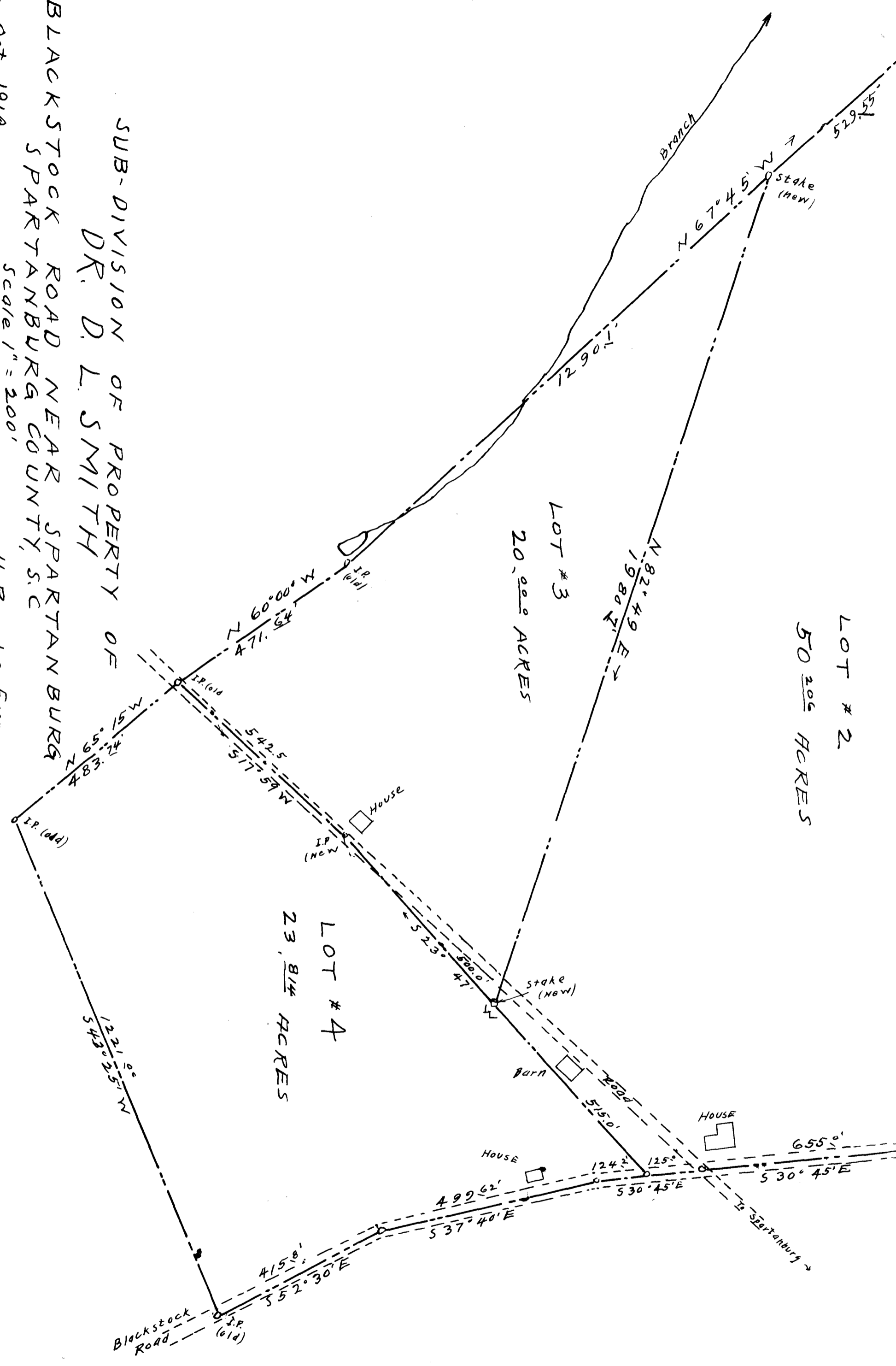


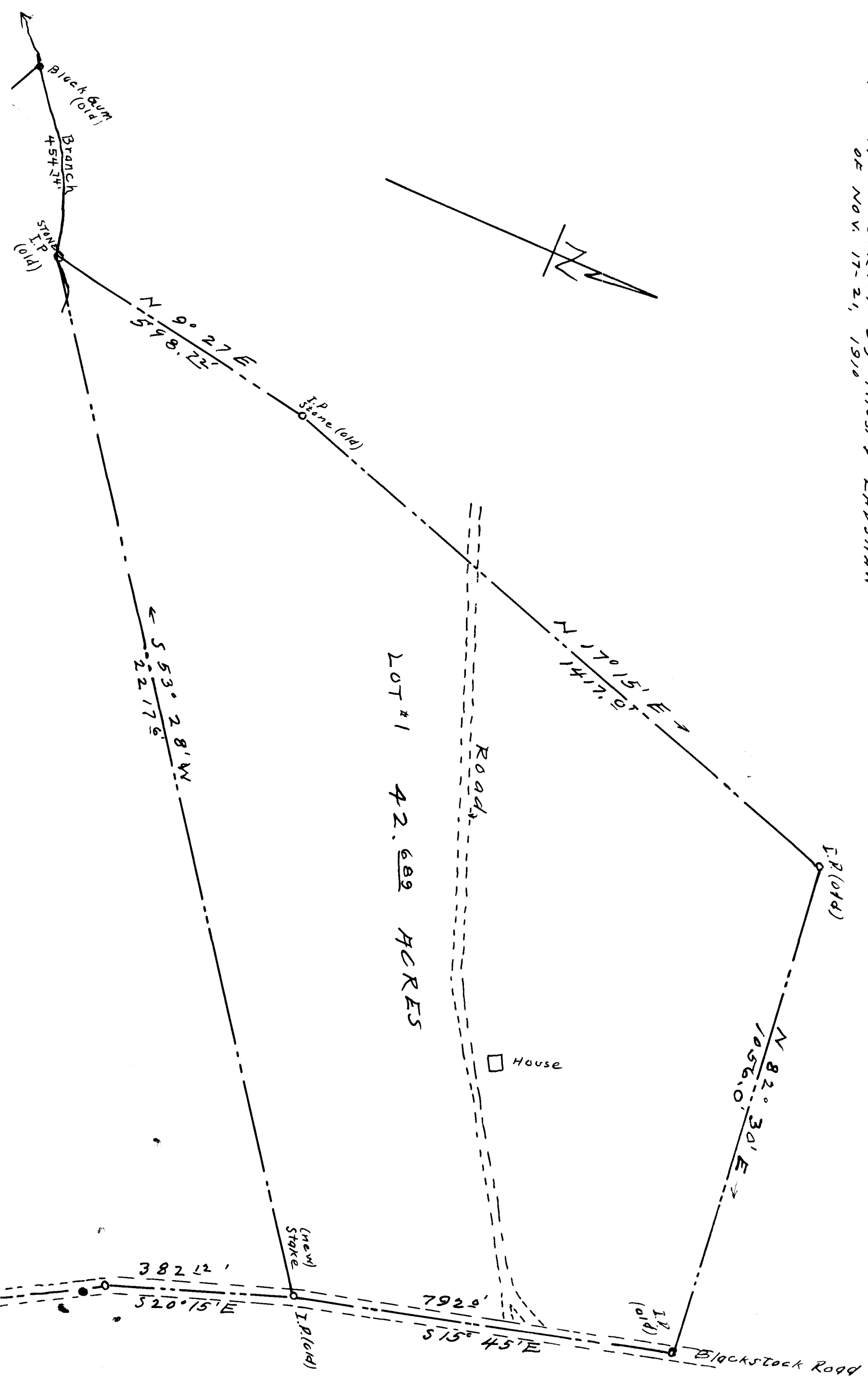
EX PARTE  
NETTIE HANE SMITH

59  
ON BLACKSTOCK ROAD NEAR SPARTANBURG  
SPARTANBURG COUNTY, S.C.  
Sept. - Oct. 1919  
Scale 1" = 200'  
H. Beede, Engr.  
By J. E. V.

SUB-DIVISION OF PROPERTY OF  
DR. D. L. SMITH



NOTE  
EXTERNAL METES AND BOUNDS ACCEPTED  
FROM MAP OF SURVEY BY THOS. D. LADSHAW  
OF NOV. 17-21, 1910



Registered, Certified & Examined Nov. 22, 1919