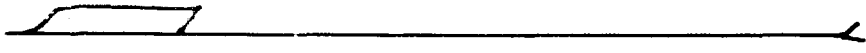
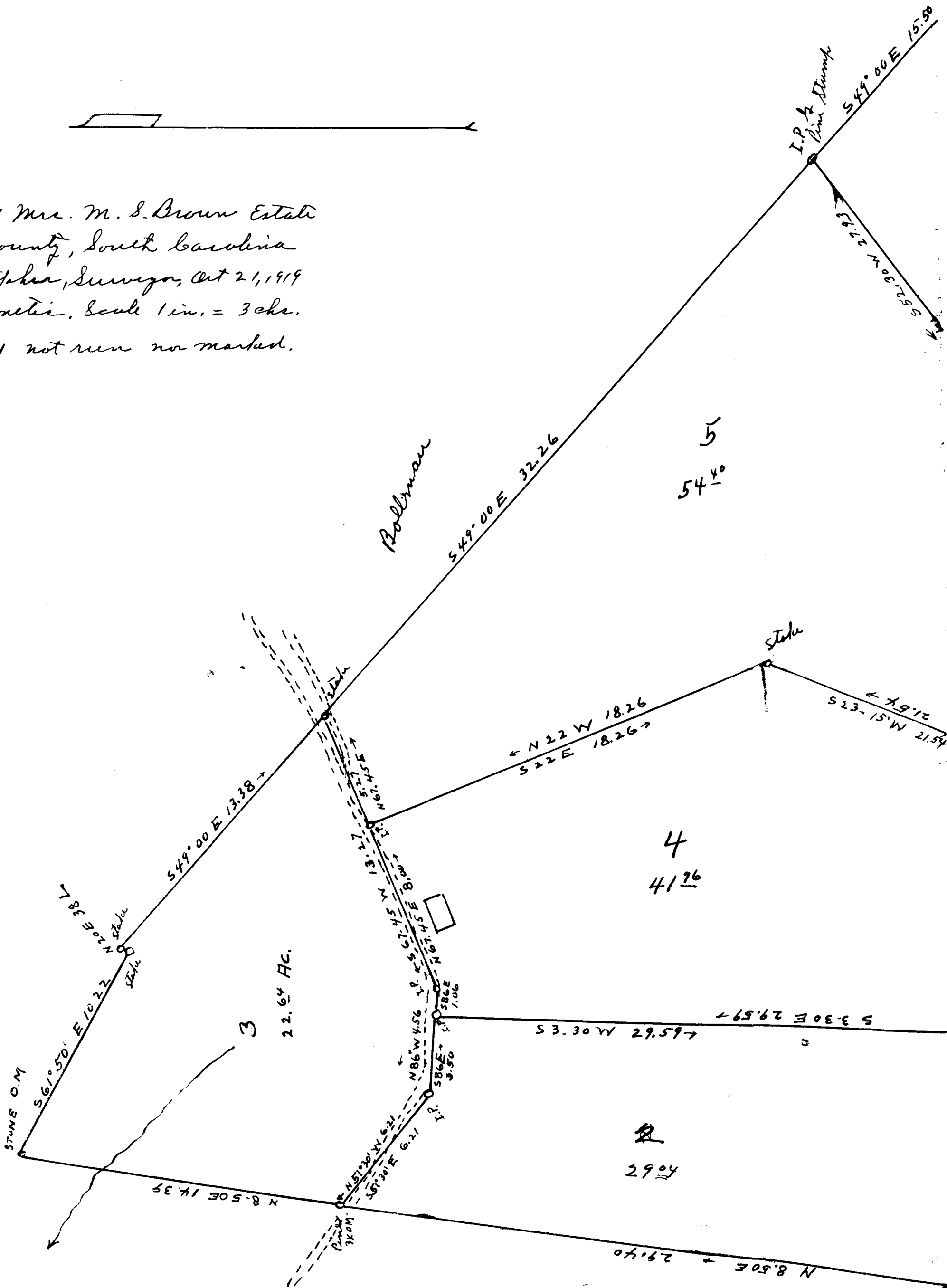


70

EX PARTE  
 MRS. M.S. BROWN



Subdivision of Mrs. M. S. Brown Estate  
 Spartanburg County, South Carolina  
 W. A. Christopher, Surveyor, Oct 21, 1919  
 Bearing Magnetic, Scale 1 in. = 3 chs.  
 Note: Line No. 1 not run nor marked.



Registered, Certified & Examined Nov. 25, 1919

