

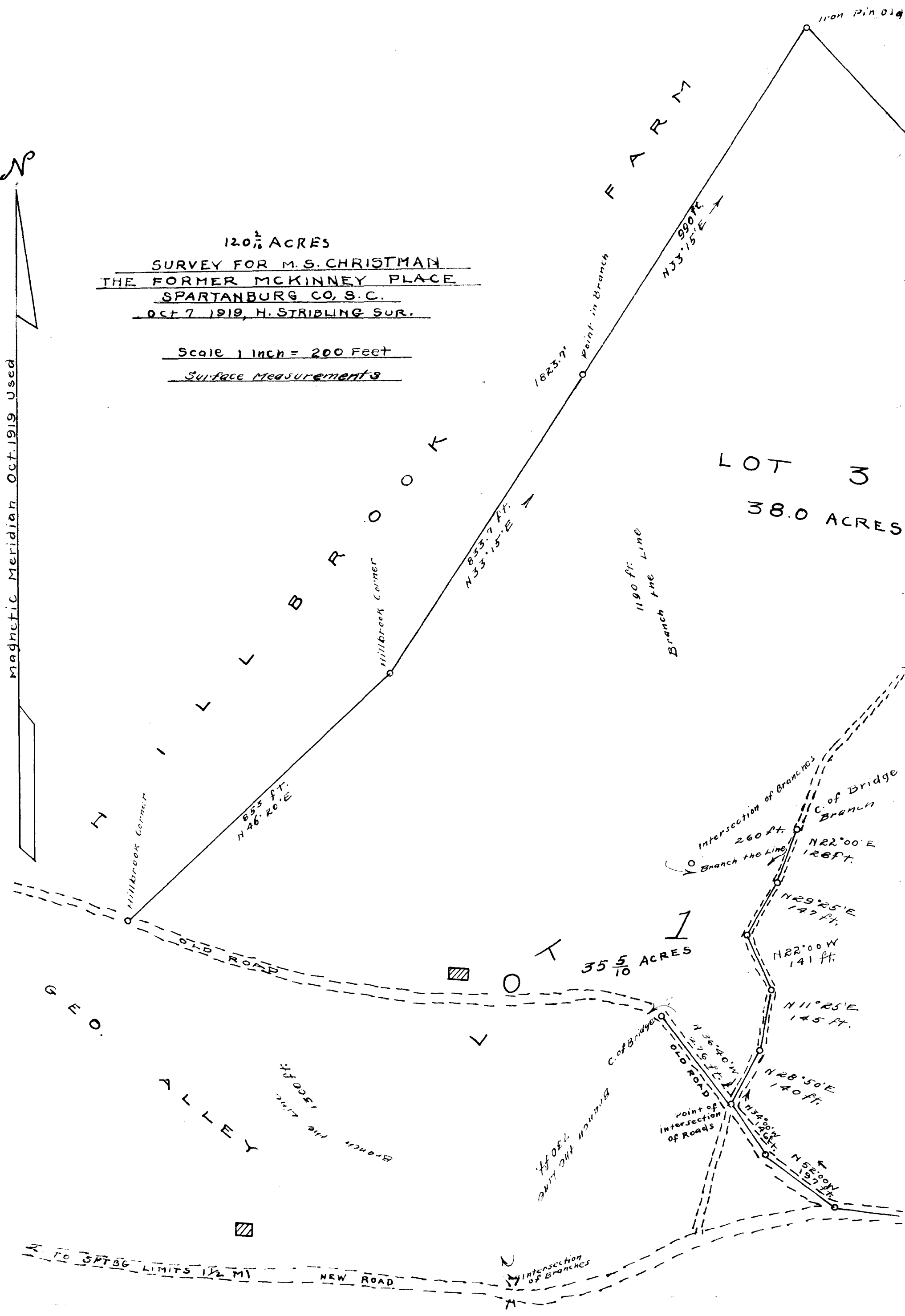
EXPARTE
M.S. CHRISTMAN



Magnetic Meridian Oct. 1919 Used

120 ¹/₁₀ ACRES
SURVEY FOR M.S. CHRISTMAN
THE FORMER MCKINNEY PLACE
SPARTANBURG CO, S.C.
OCT 7 1919, H. STRIBLING SUR.

Scale 1 inch = 200 Feet
Surface Measurements



Registered, Certified & Examined Nov. 28, 1919

