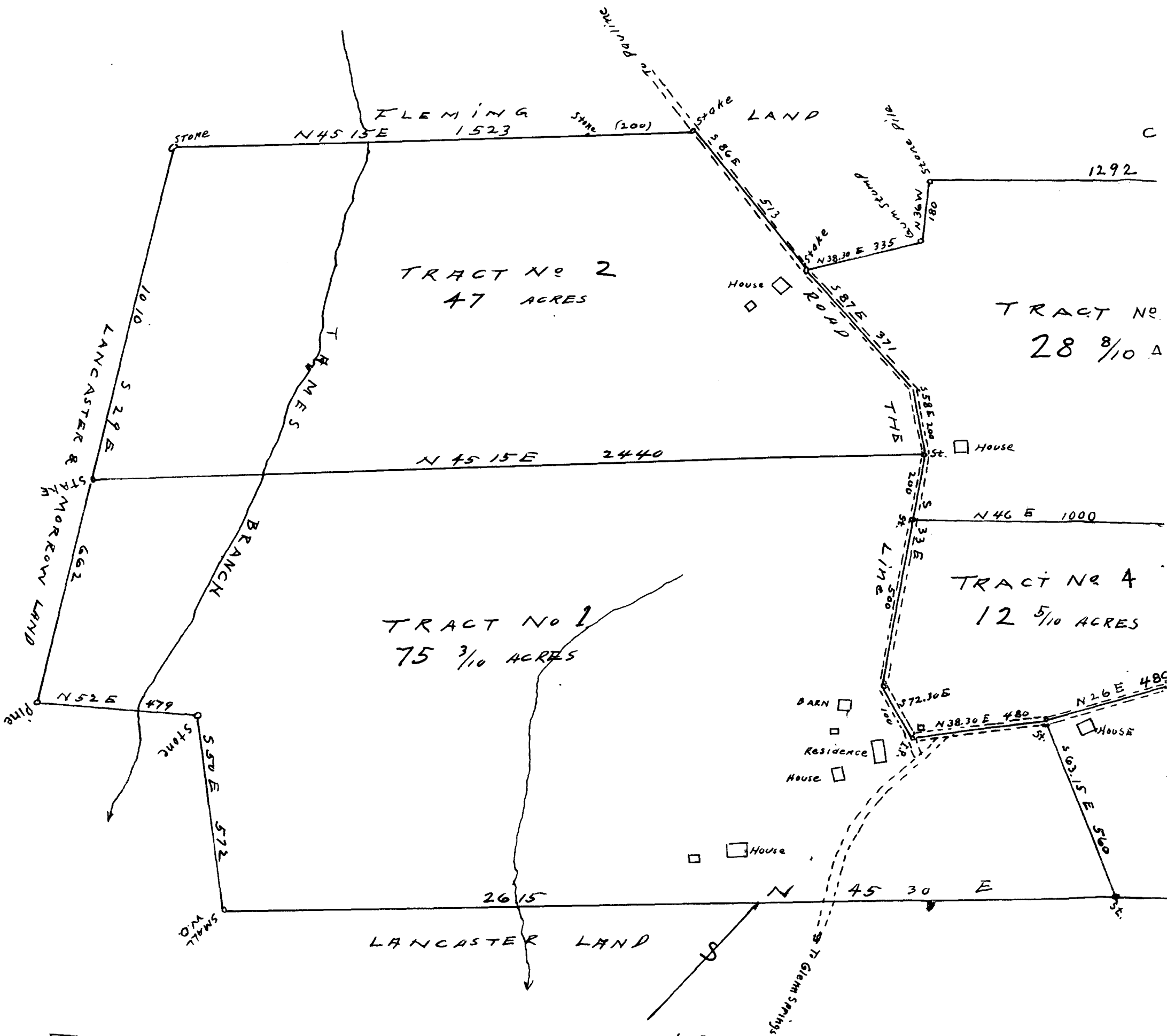


EX PARTE
COLUMBUS C. HAYES

AT AUCTION NOVEMBER 27-1919
BY INTERSTATE LAND AUCTION COMPANY



REPRESENTING LANDS KNOWN AS "COLUMBUS C. HAYES' PLACE NEAR PAULINE"
SCALE 300' = 1"

Registered, certified + Examined Dec. 3, 1919