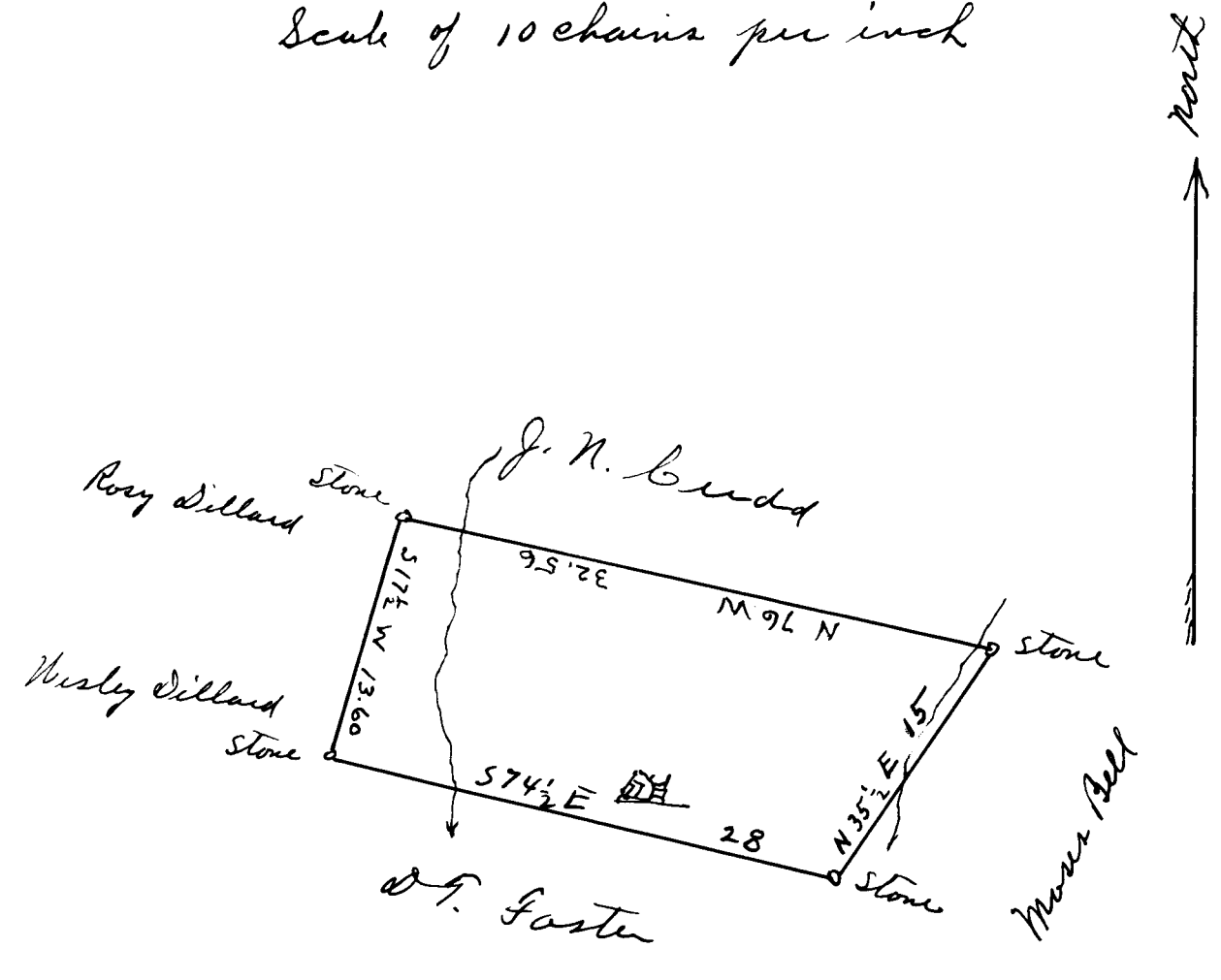


77

EX PARTE
CHARLES WIGGINS

Scale of 10 chains per inch



Spartanburg County
South Carolina.

The above plat correctly represents the lands of Charles Wiggins situated in Spartanburg County, S.C., lying on waters of Betty Green Branch of Lawson Fork. It contains forty-one and two-thirds acres having such farm marks and boundaries as are above shown. Nov. 29, 1894

J. E. Johnson
Surveyor

Registered, Certified & Examined Jan'y 3, 1920