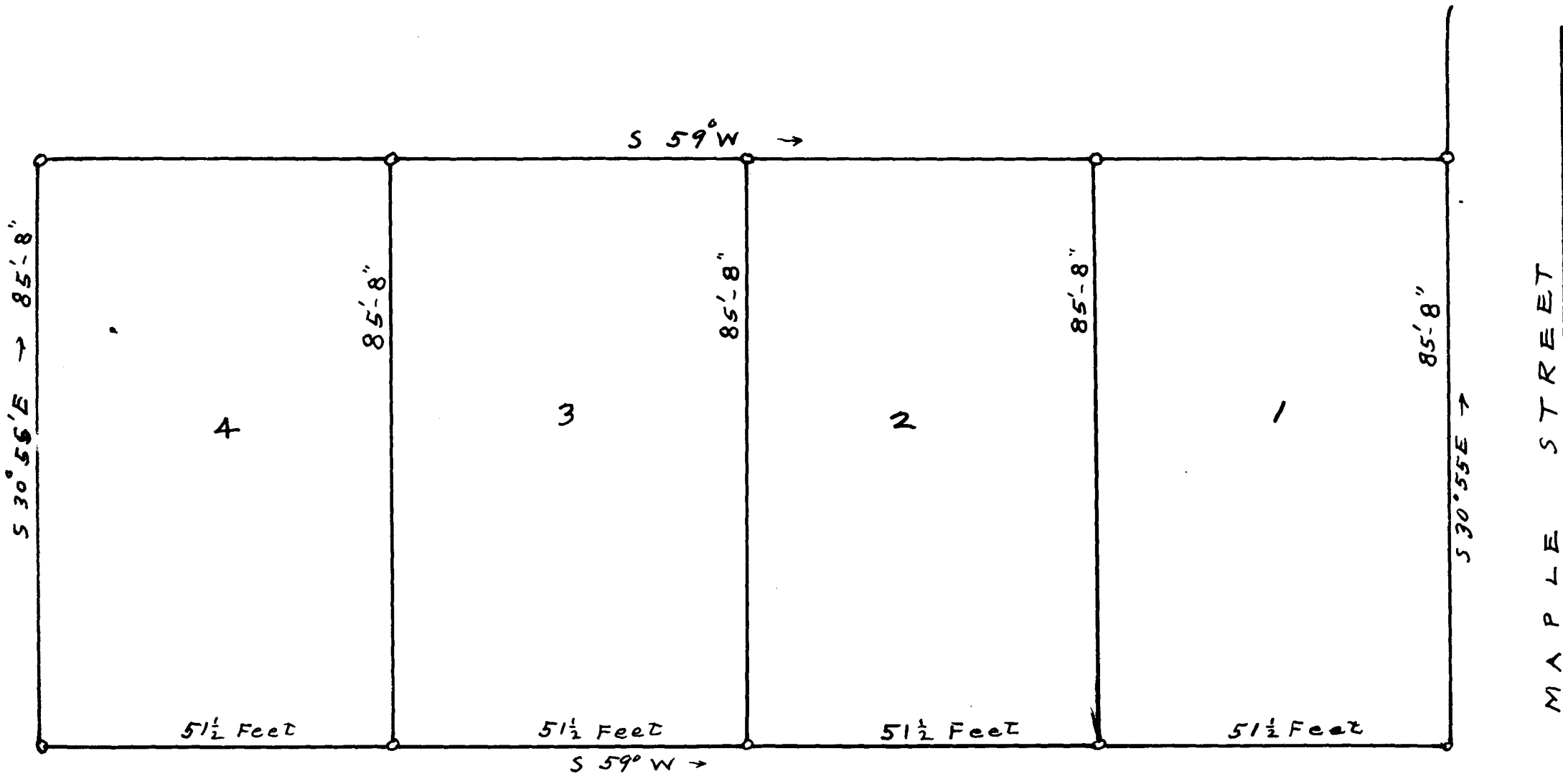


89

EX PARTE
R. L. LEE



THE-R.L.LEE-PROPERTY, LANDRUM, S.C

SUB-DIVIDED-FOR
INMAN-LAND AGENCY

J.H. ATKINS, Surveyor.

W.F. BAGGOTT, M'GR

JAN. 2, 1920

R #3, Campobello, S.C

Registered, Certified & Examined January 14, 1920