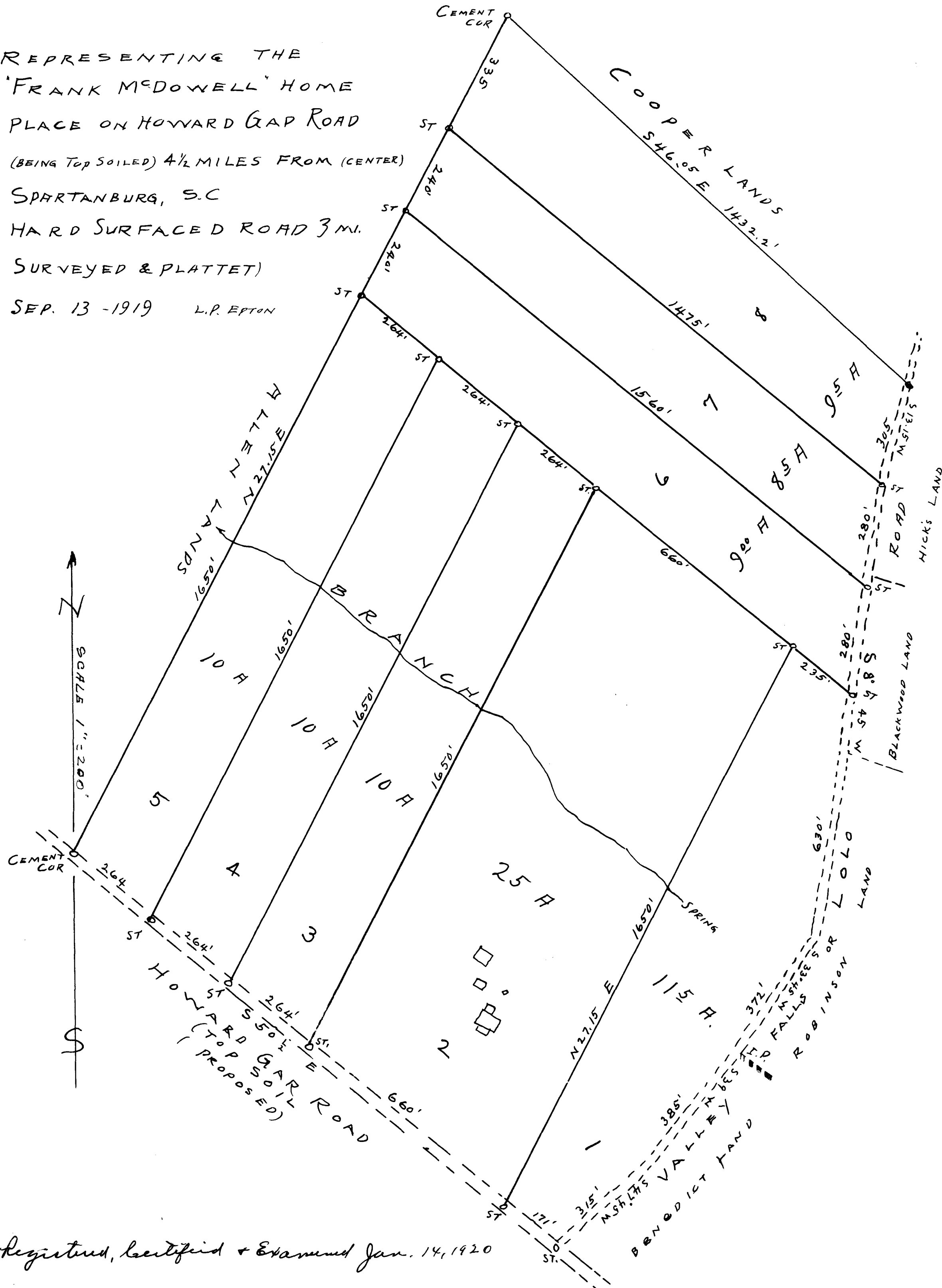


93

EX PARTE  
L. PEPTON & J. K. HOTTAL

REPRESENTING THE  
'FRANK McDOWELL' HOME  
PLACE ON HOWARD GAP ROAD  
(BEING TOP SOILED) 4 1/2 MILES FROM (CENTER)  
SPARTANBURG, S.C  
HARD SURFACED ROAD 3 MI.  
SURVEYED & PLATTET)  
SEP. 13 - 1919 L.P. EPTON



Registered, Certified & Examined Jan. 14, 1920