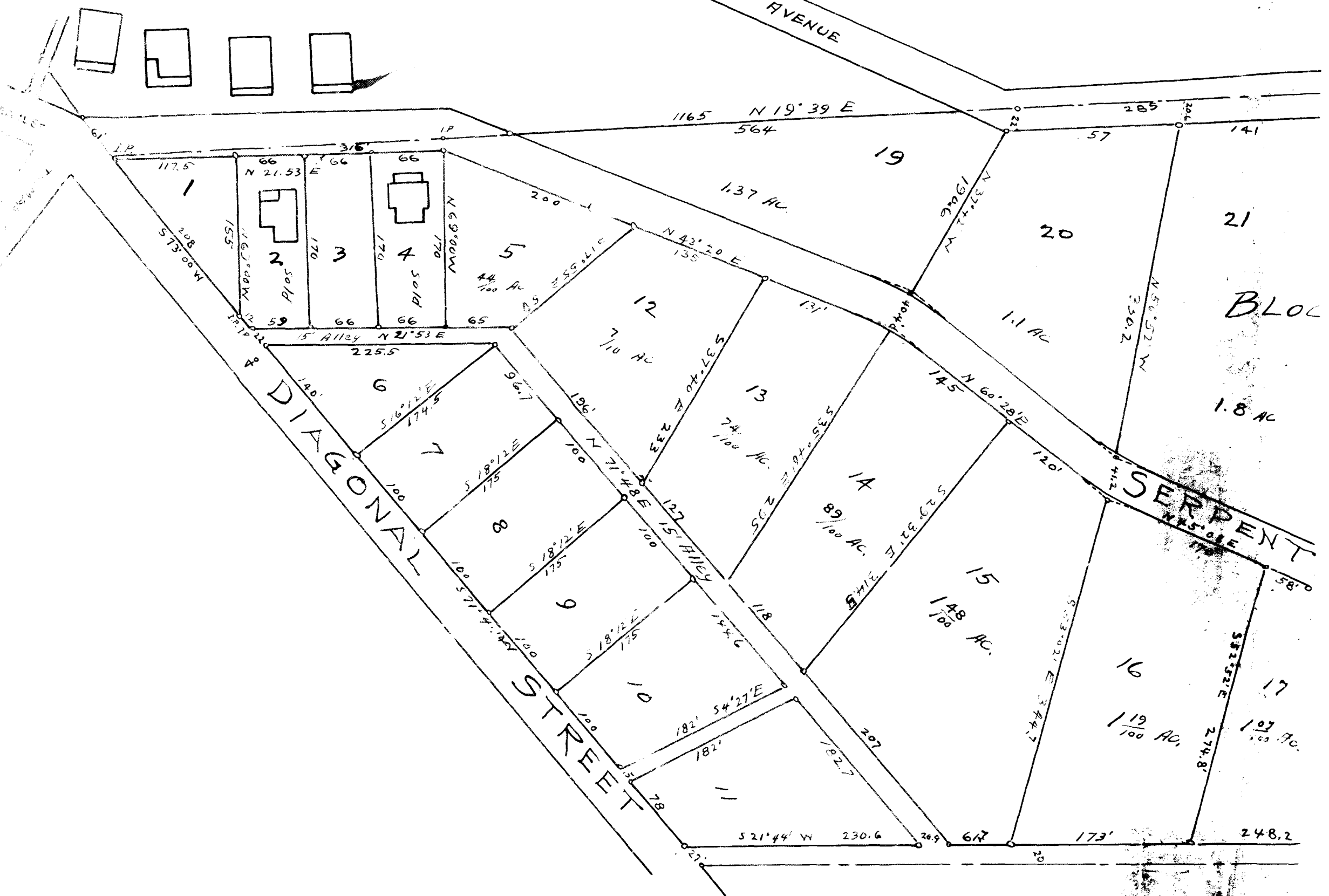
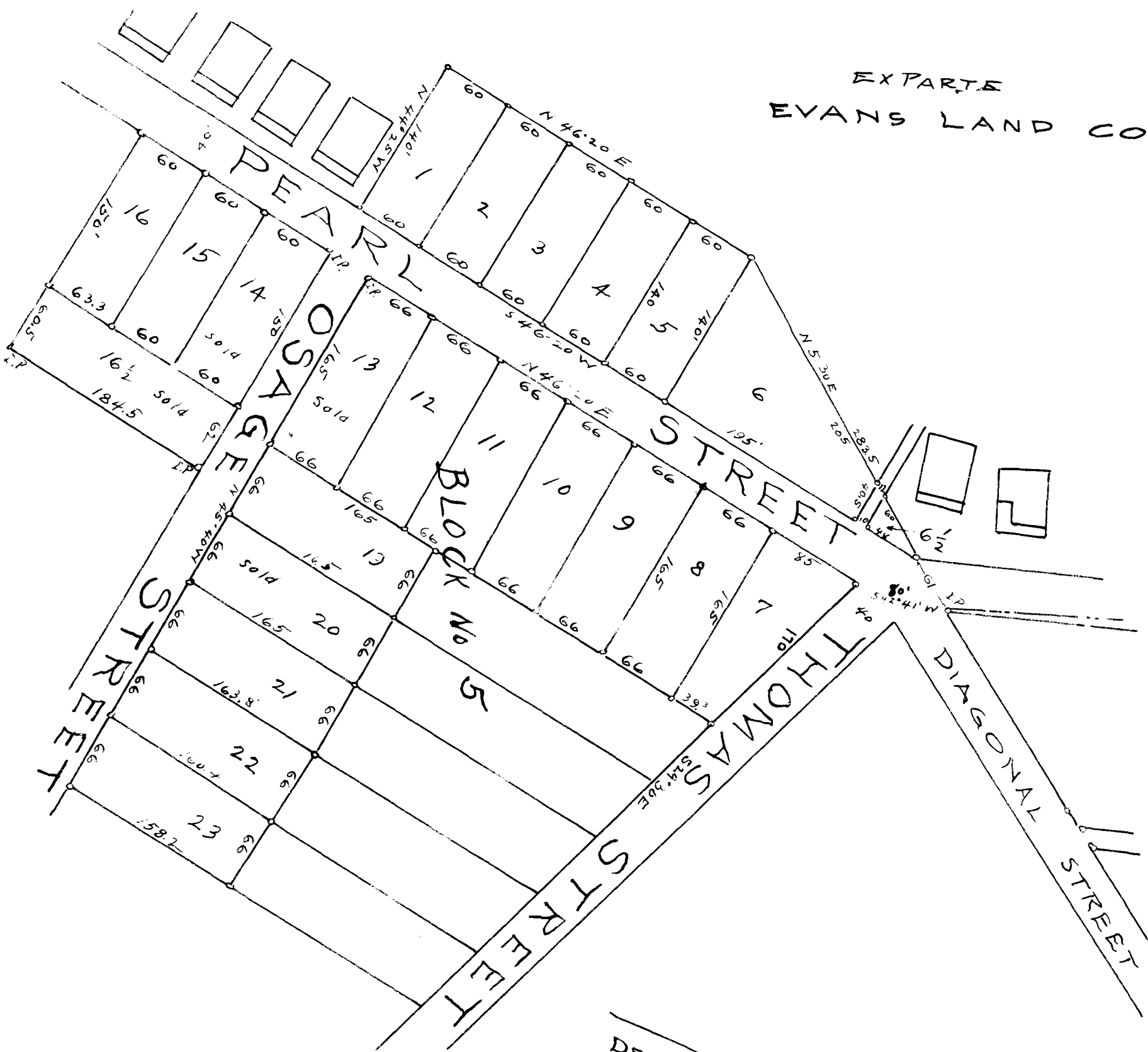


- 114

EX PARTE  
EVANS LAND CO.



# H. EVINS EST

PART NOW OWNED BY  
J. C. EVINS ET. AL  
IN THE CITY OF

## SPARTANBURG SPARTANBURG CO. - S.C.

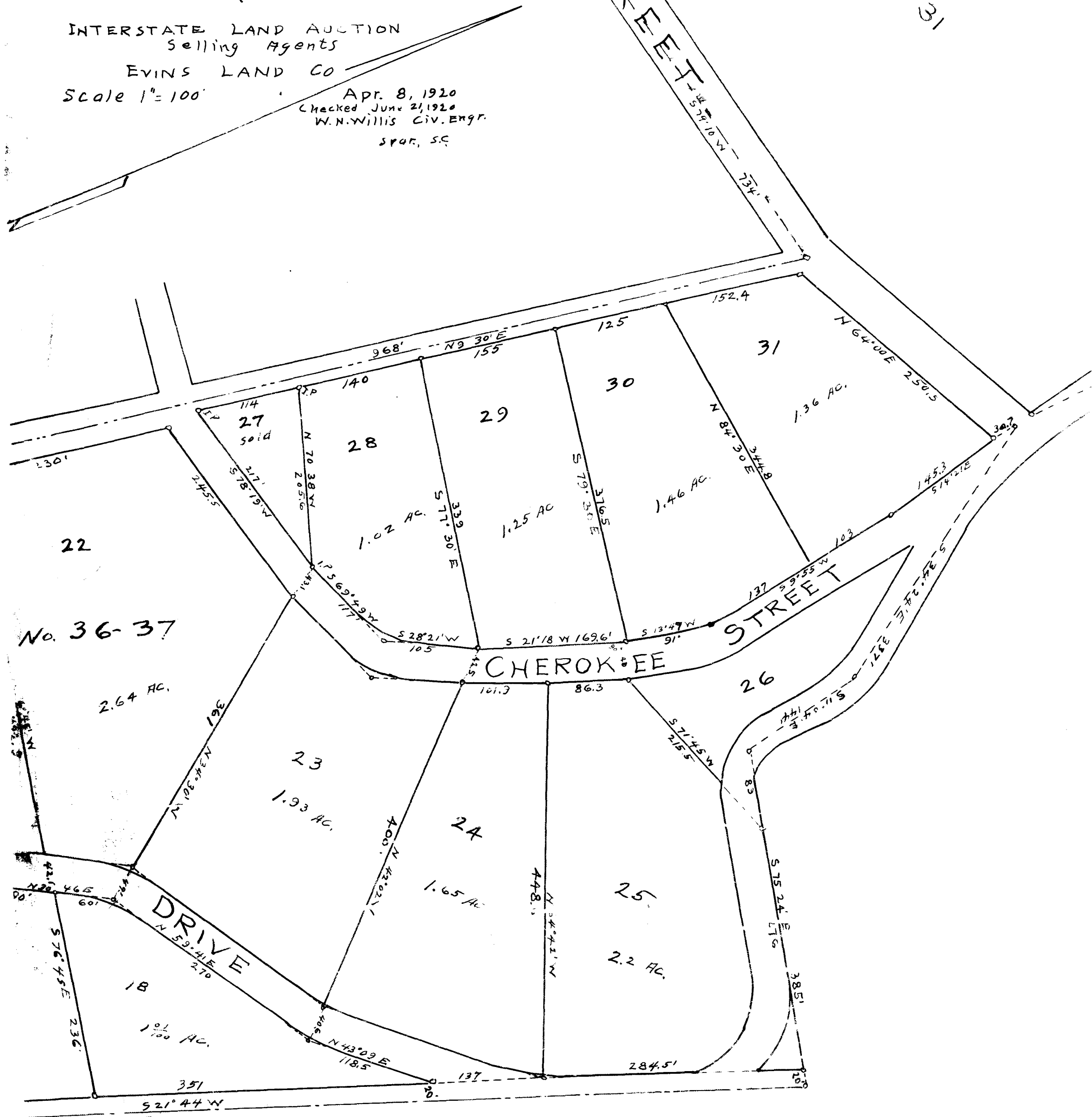
BLOCK No. 31  
SEE PAGE 115"

INTERSTATE LAND AUCTION  
Selling Agents

EVINS LAND CO

Scale 1" = 100'

Apr. 8, 1920  
Checked June 21, 1920  
W. N. Willis CIV. ENGR.  
SPAR., S.C.



22

No. 36-37

DRIVE

CHEROKEE STREET

STREET

Registered, Certified & Examined April 10, 1920