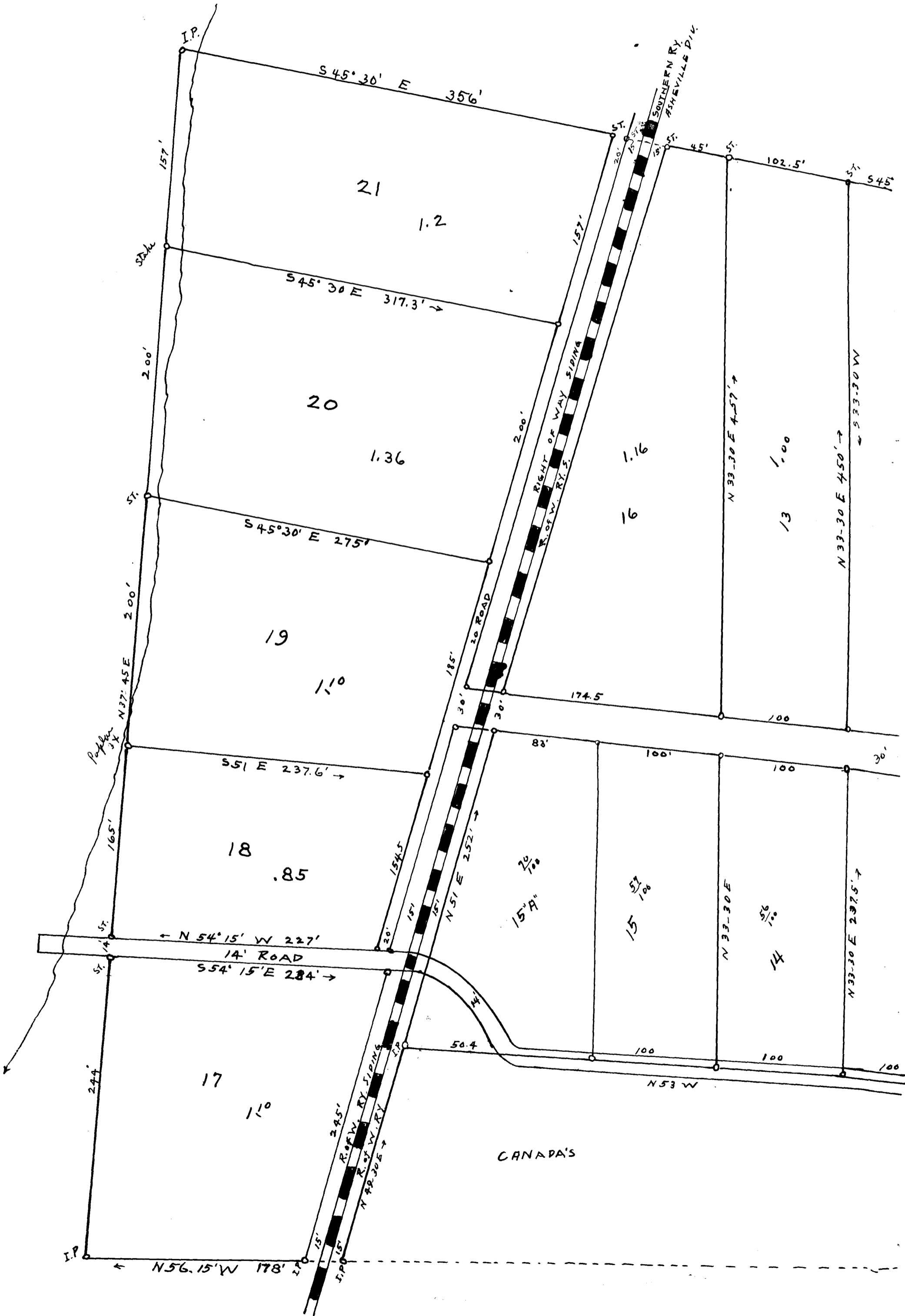
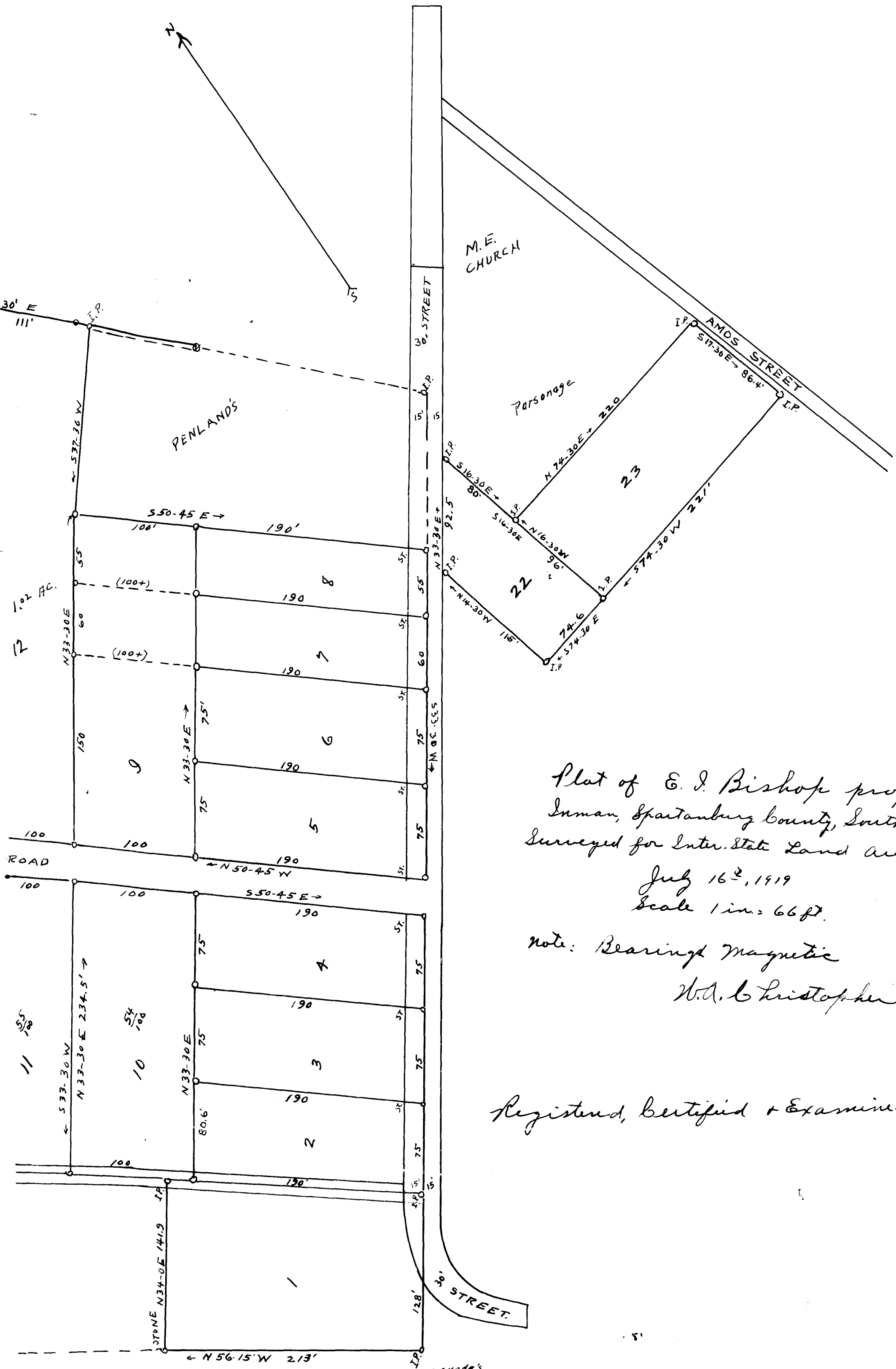


EX PARTE
E. I. BISHOP





Plat of E. J. Bishop property
 Inman, Spartanburg County, South Carolina
 Surveyed for Inter. State Land Auction Co.

July 16th, 1919

Scale 1 in. = 66 ft.

note: Bearings Magnetic

W.A. Christopher, Surv.

Registered, Certified + Examined May 11, 1920