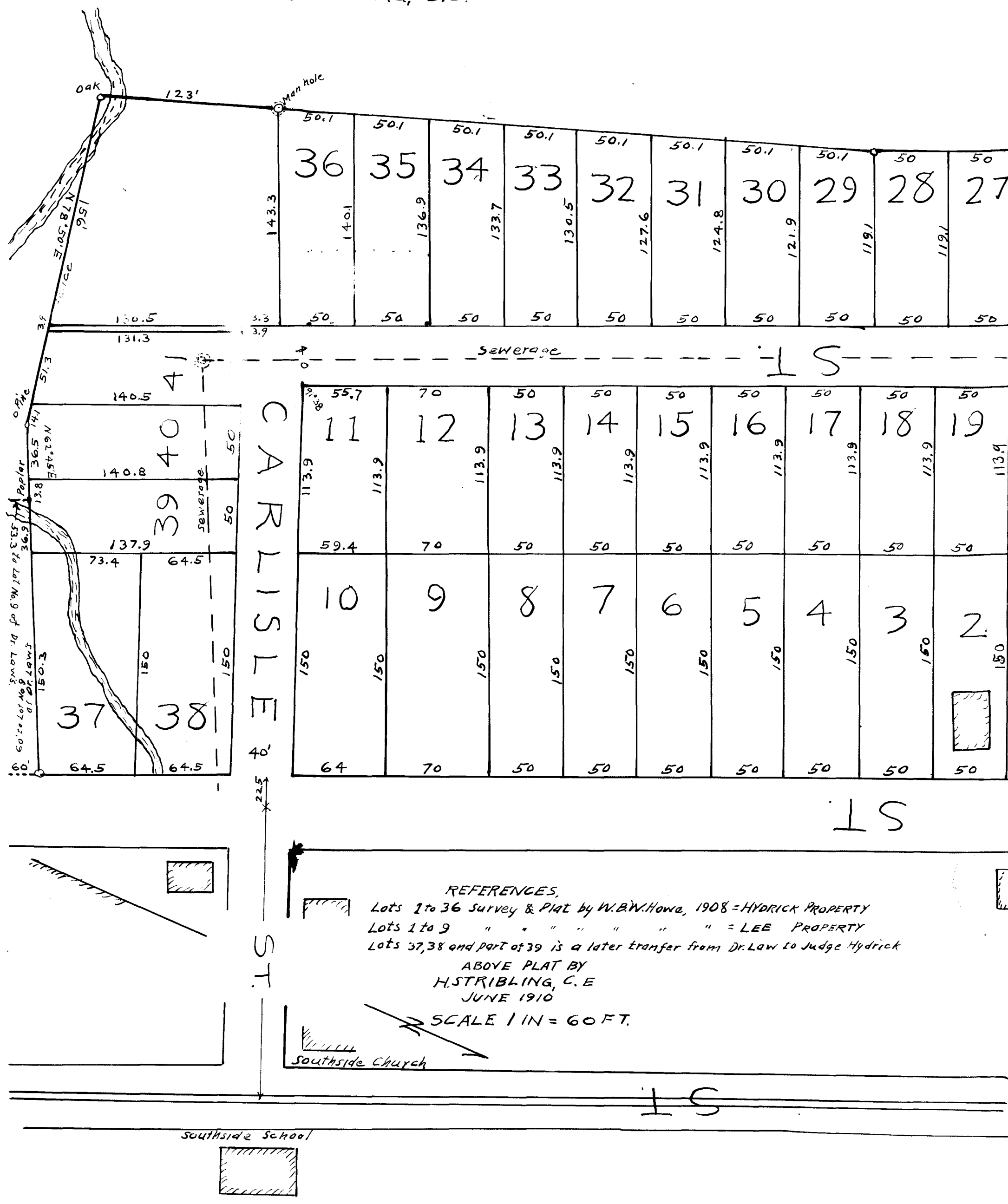


129

EX PARTE
J. B. LEE
ROSA L. HYDRICK.

PLAT OF HYDRICK & LEE PROPERTY, FOR J. W. ALEXANDER, AGENT. SPARTANBURG, S.C.



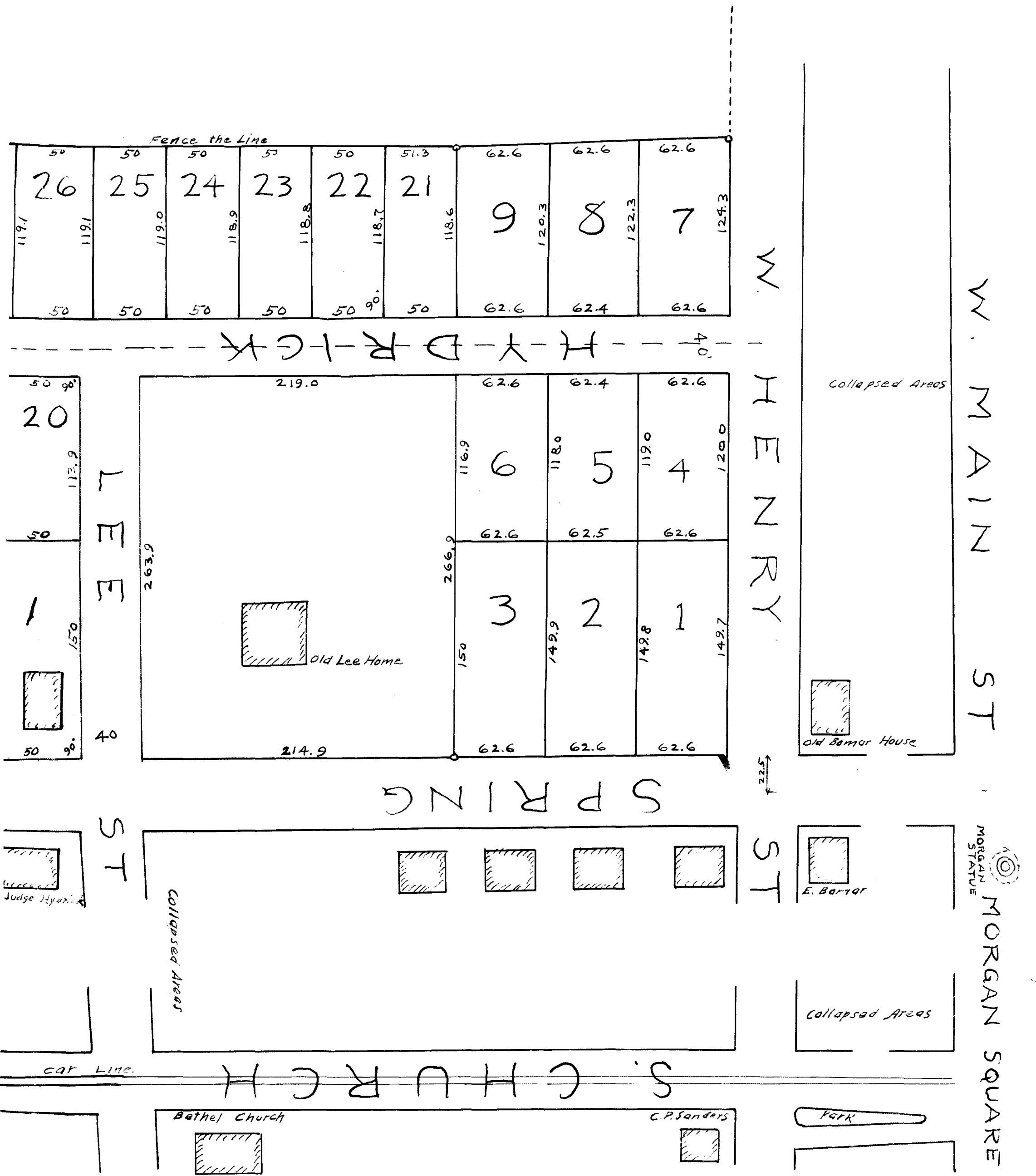
REFERENCES,
 Lots 1 to 36 Survey & Plat by W. B. W. Howe, 1908 = HYDRICK PROPERTY
 Lots 1 to 9 " " " " " " " " = LEE PROPERTY
 Lots 37, 38 and part of 39 is a later transfer from Dr. Law to Judge Hydrick

ABOVE PLAT BY
 H. STRIBLING, C. E.
 JUNE 1910

SCALE 1 IN = 60 FT.

SOUTHSIDE Church

SOUTHSIDE School



Registered, certified + Examined July 2, 1920