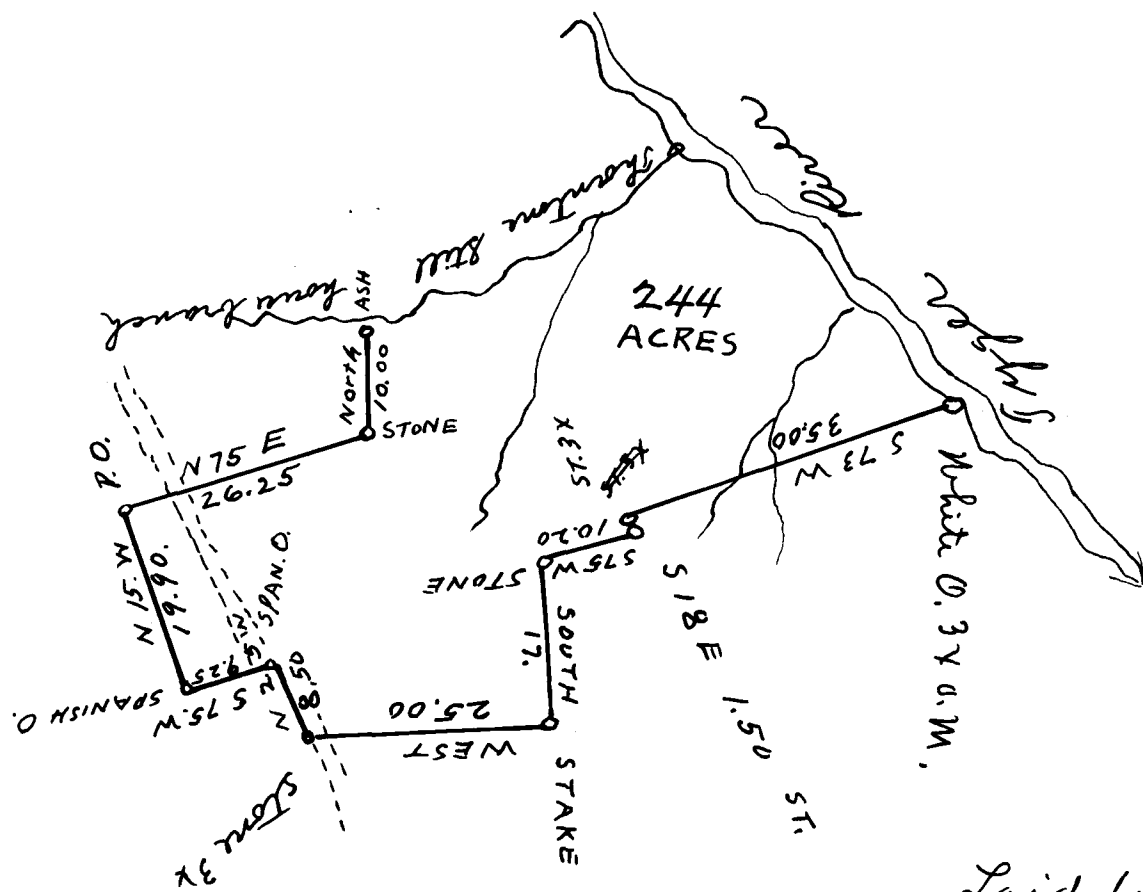


EX PARTE  
J. M. LANHAM



Laid down by 20 chains per inch

The above Plat represents a barlish land.  
Surveyed January 5<sup>th</sup> 1832

George Nicholls  
D.S.

Note:  
Part of J. M. Lanham Home Place  
see Book T. T. T. page 307

Registered, Certified & Examined July 9, 1920