

✓ 139

EX PARTE
RIGBY
-vs-
RIGBY

PROPERTY
OF

I. A. RIGBY ET. AL.

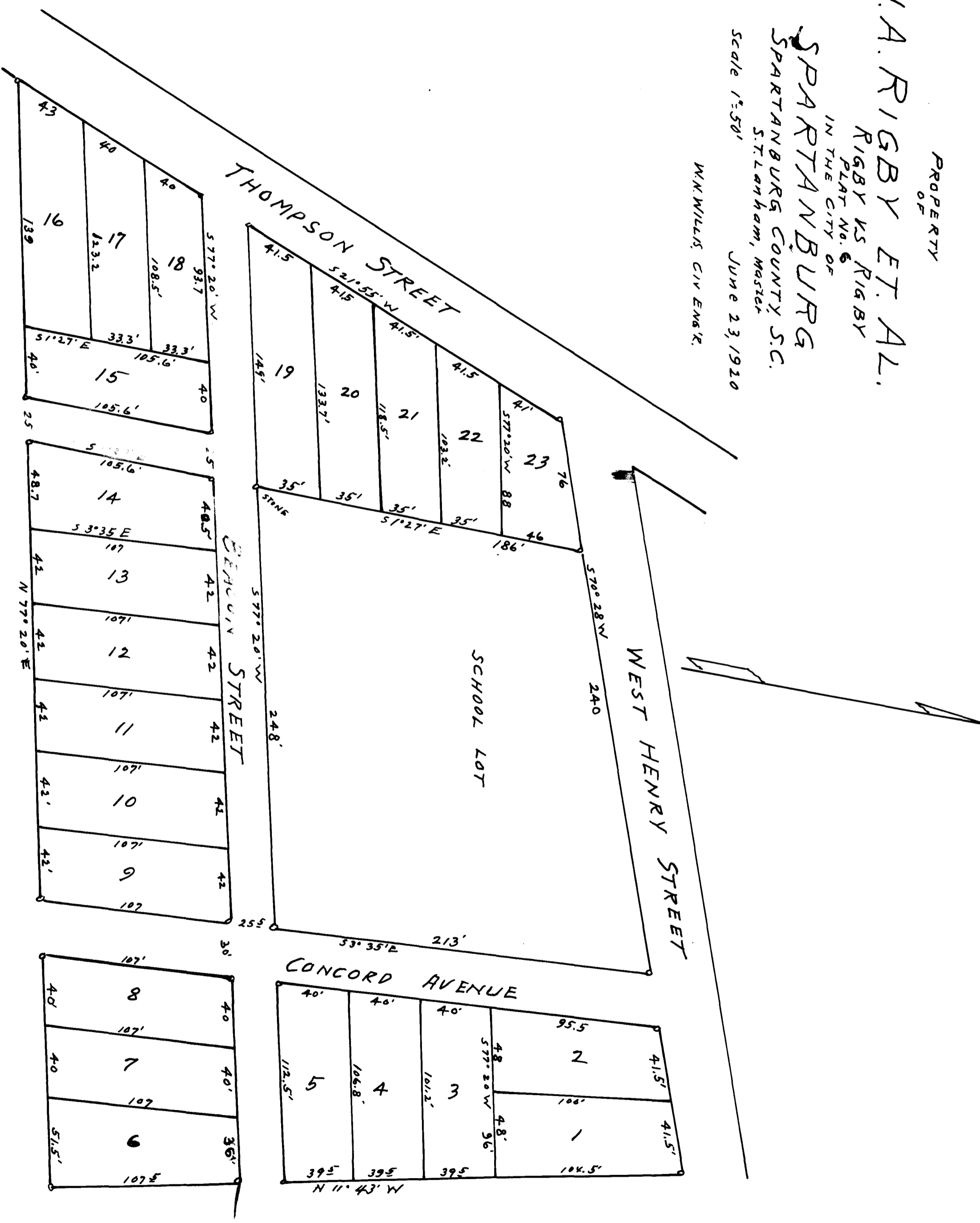
RIGBY VS RIGBY
PLAT NO. 6
IN THE CITY OF

SPARTANBURG

SPARTANBURG COUNTY, S.C.
S. T. LANHAM, MASTER

Scale 1"=50'

W. N. WILKINS, CIV. ENGR.



Registered, Certified & Examined August 14, 1920