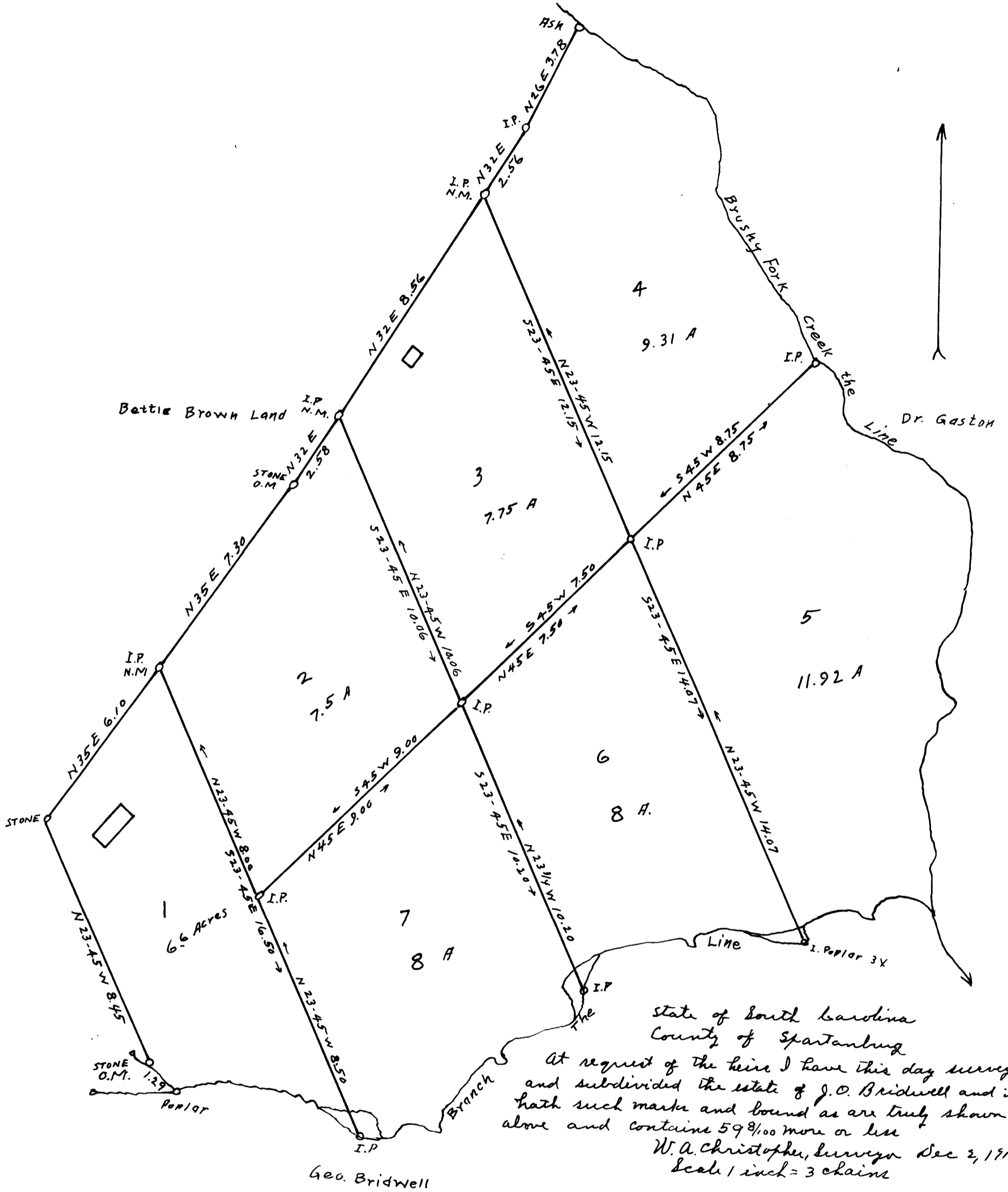


142

EX PARTE
J. O. BRIDWELL



state of South Carolina
County of Spartanburg

At request of the heirs I have this day surveyed and subdivided the estate of J. O. Bridwell and it hath such marks and bound as are truly shown above and contains $59\frac{8}{100}$ more or less

W. A. Christopher, Surveyor Dec 2, 1919
Scale 1 inch = 3 chains

Registered, Certified & Examined August 25, 1920