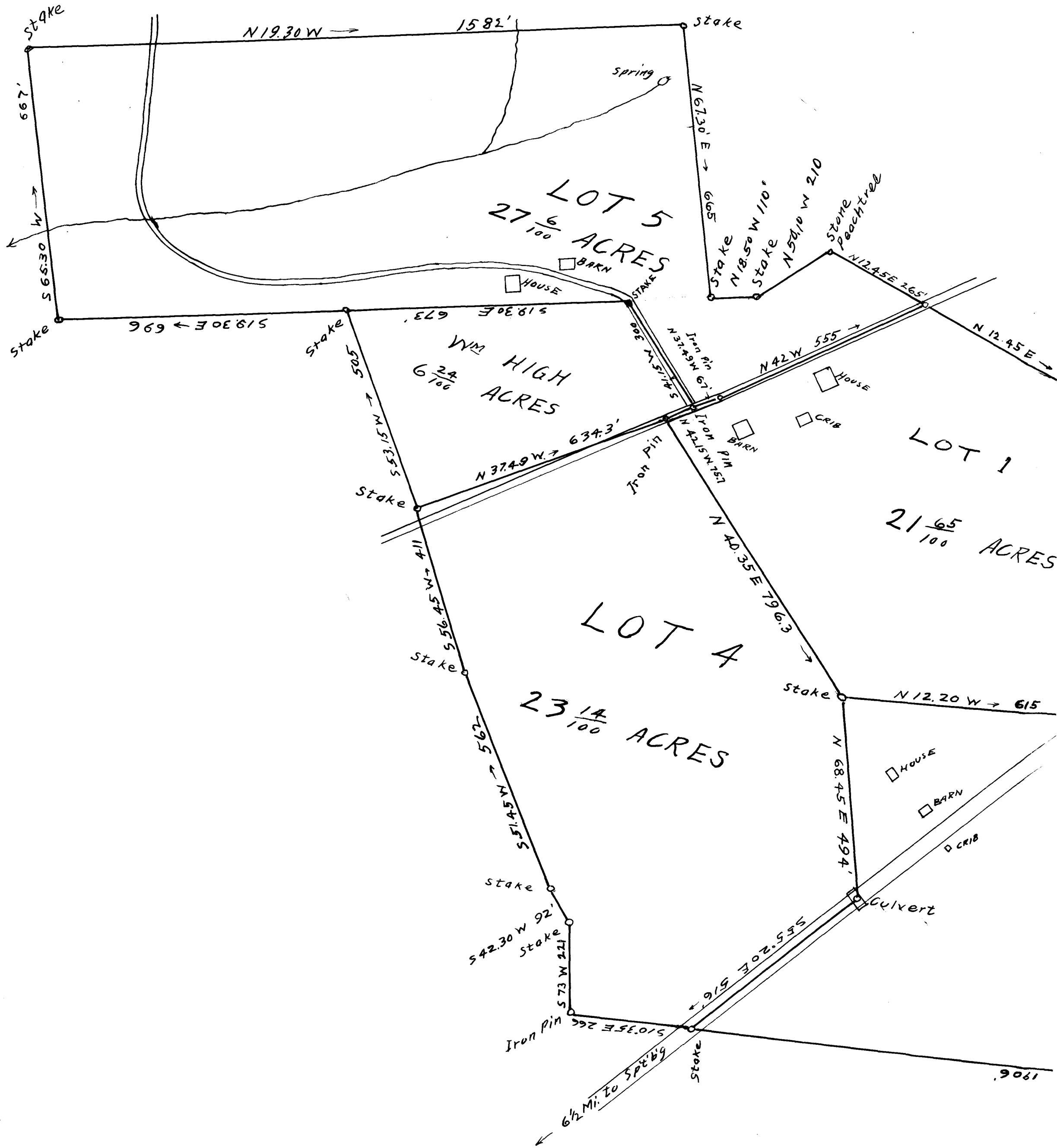


v 148

EX PARTE
H. A. LIGON
G. L. BISHOP



SUBDIVISION

OF THE

H. A. LIGON & G. L. BISHOP FARM

6 1/2 MILES NORTHWEST OF SPARTANBURG

ON THE

HOWARD GAP ROAD

CONTAINING 136.27 ACRES

Scale 1" = 200'

August 31, 1920

Lodshaw & Lodshaw

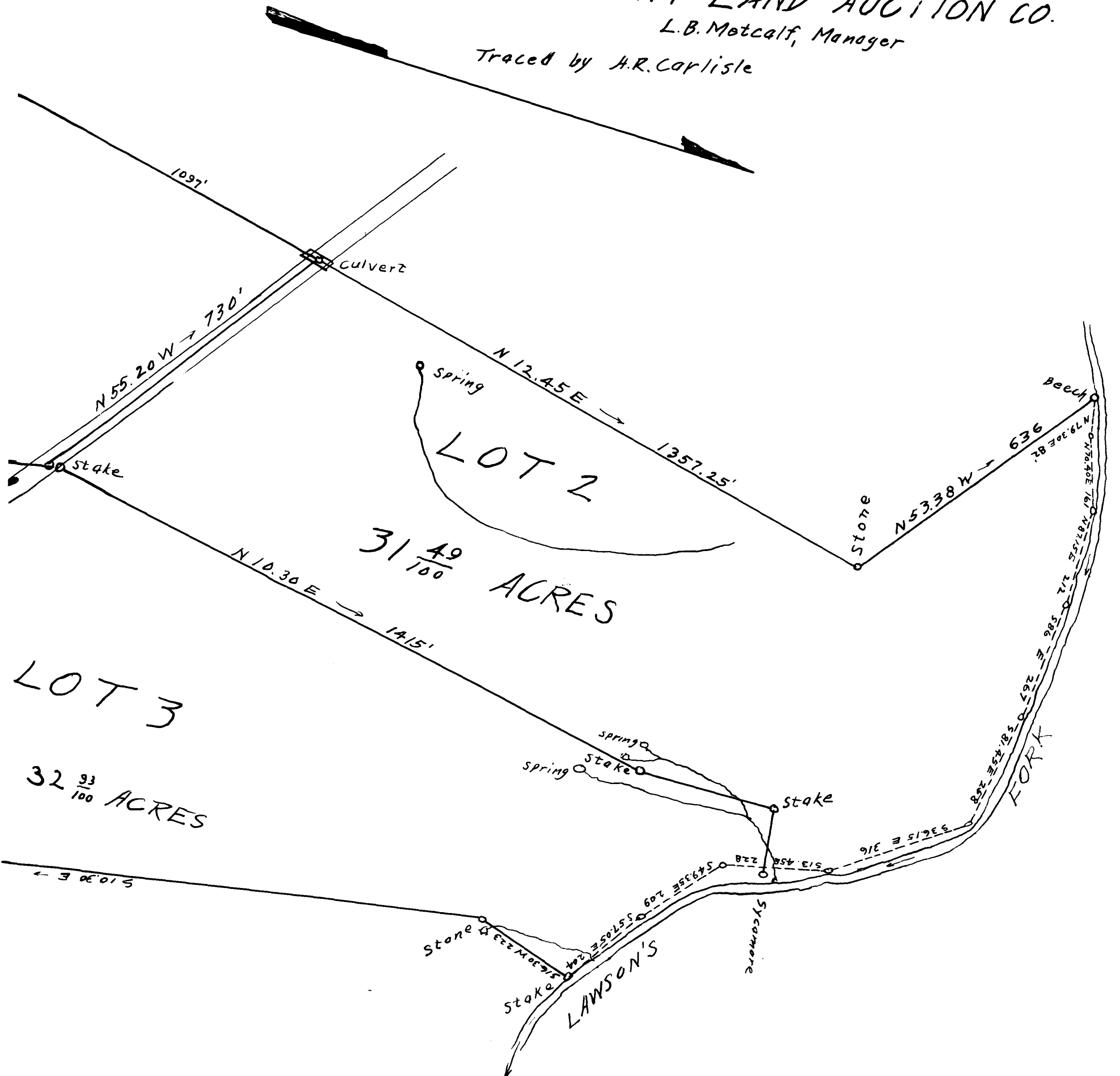
Engineers

FOR

PIEDMONT LAND AUCTION CO.

L. B. Metcalf, Manager

Traced by A. R. Carlisle



Registered, Certified & Examined Sept. 13, 1920