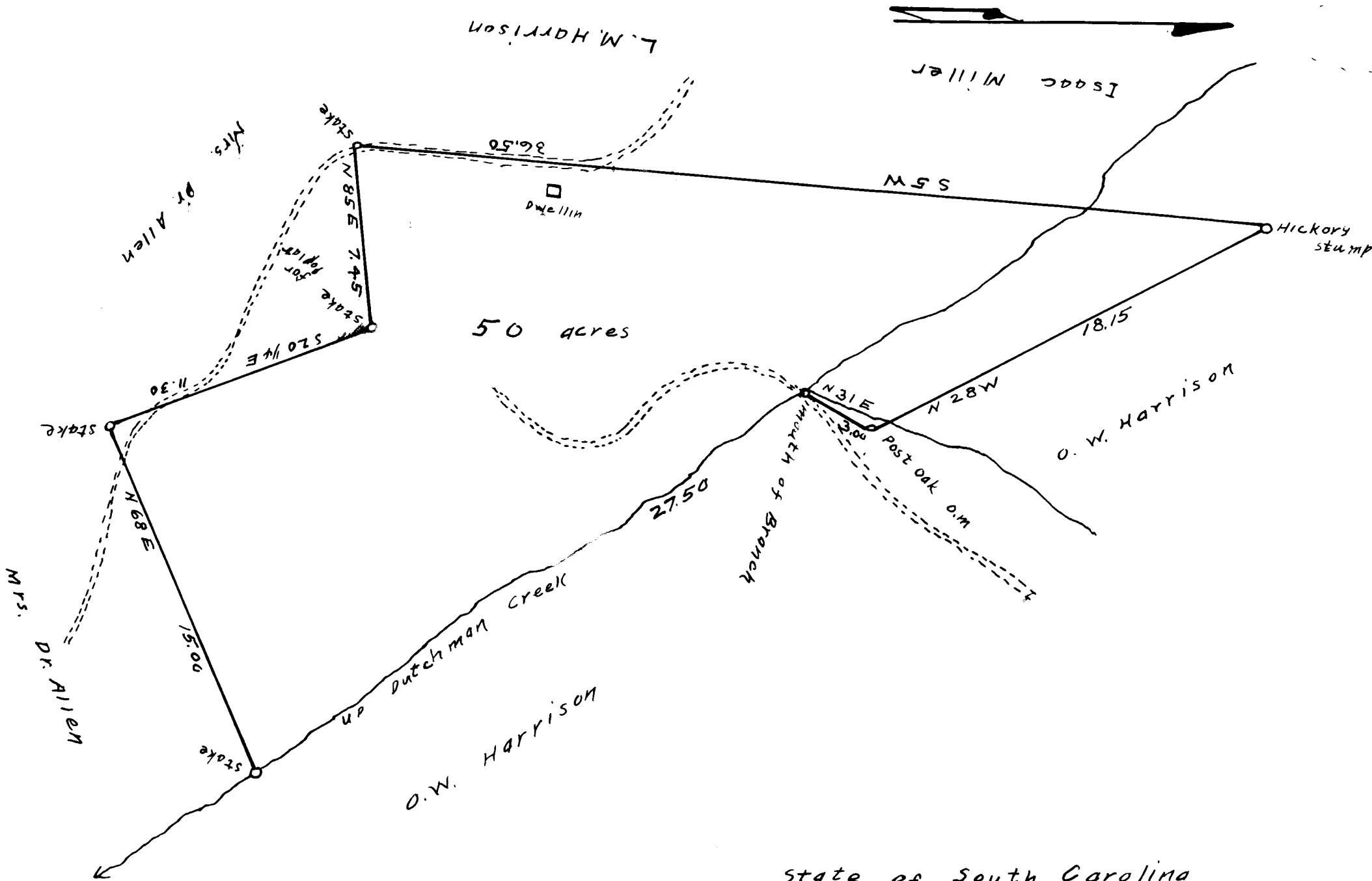


149

EX PARTE  
ARIEL BAXTER VARNER



State of South Carolina  
County of Spartanburg

Ariel Baxter Varner Estate

surveyed at request of S.T. Lanham, Master

Surveyed  
Sept. 9, 1920

S. G. Anderson & Son  
surveyors.

Scale: 5ch = 1 in.

Registered, Certified & Examined Sept. 14, 1920