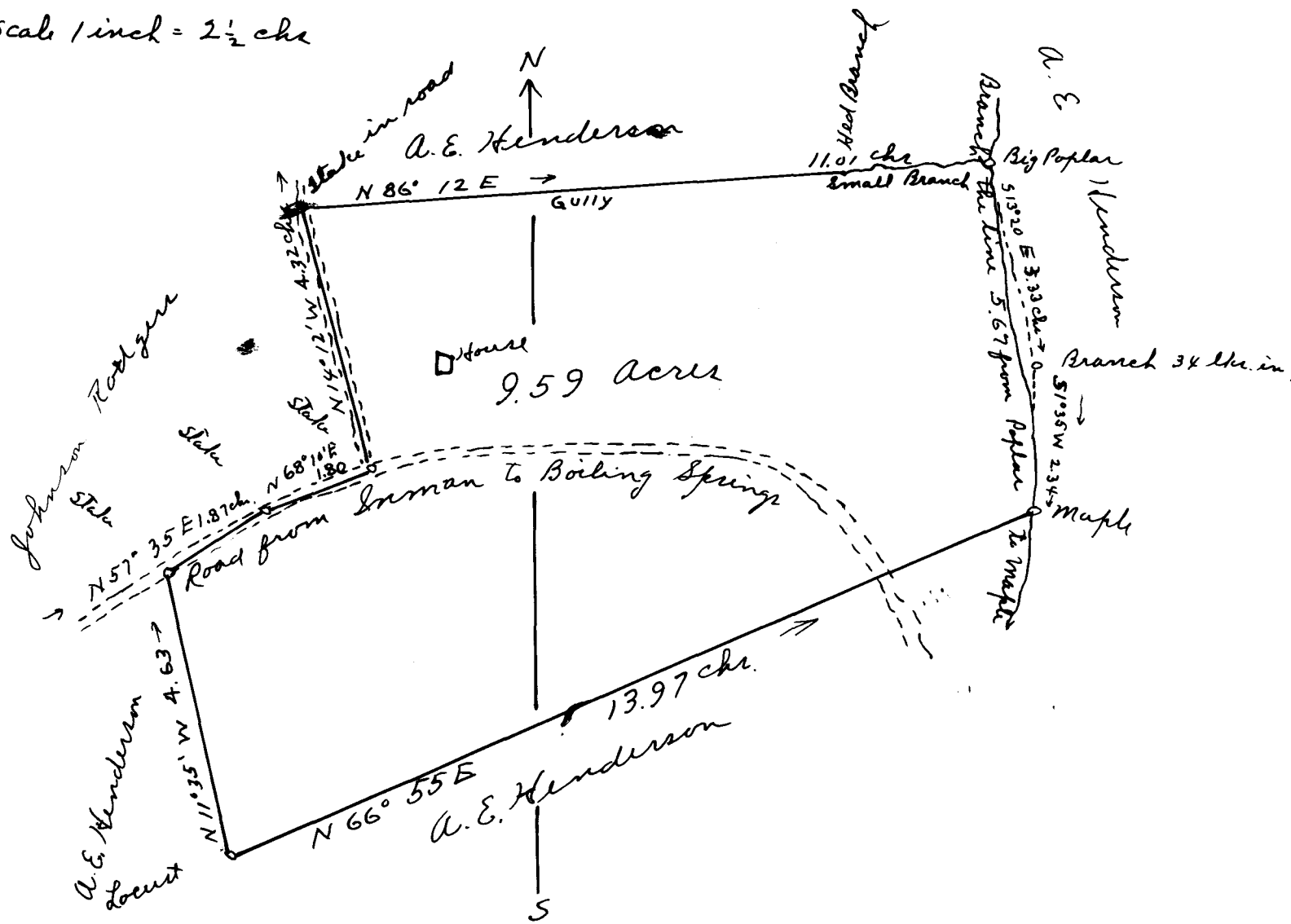


v 151

EX PARTE
J. N. COOK

Scale 1 inch = 2 1/2 chs



State of South Carolina
Spartanburg County.

The above plat correctly represents a lot of land belonging to J. N. Cook. It is situated in Spartanburg County, S. C. and lies about one and a half miles East of Sumner. It contains nine and 59/100 acres.

Resurveyed by me Aug. 21st 1920.

M. E. Johnson
Surveyor

Registered, Rectified & Examined Sept. 13, 1920