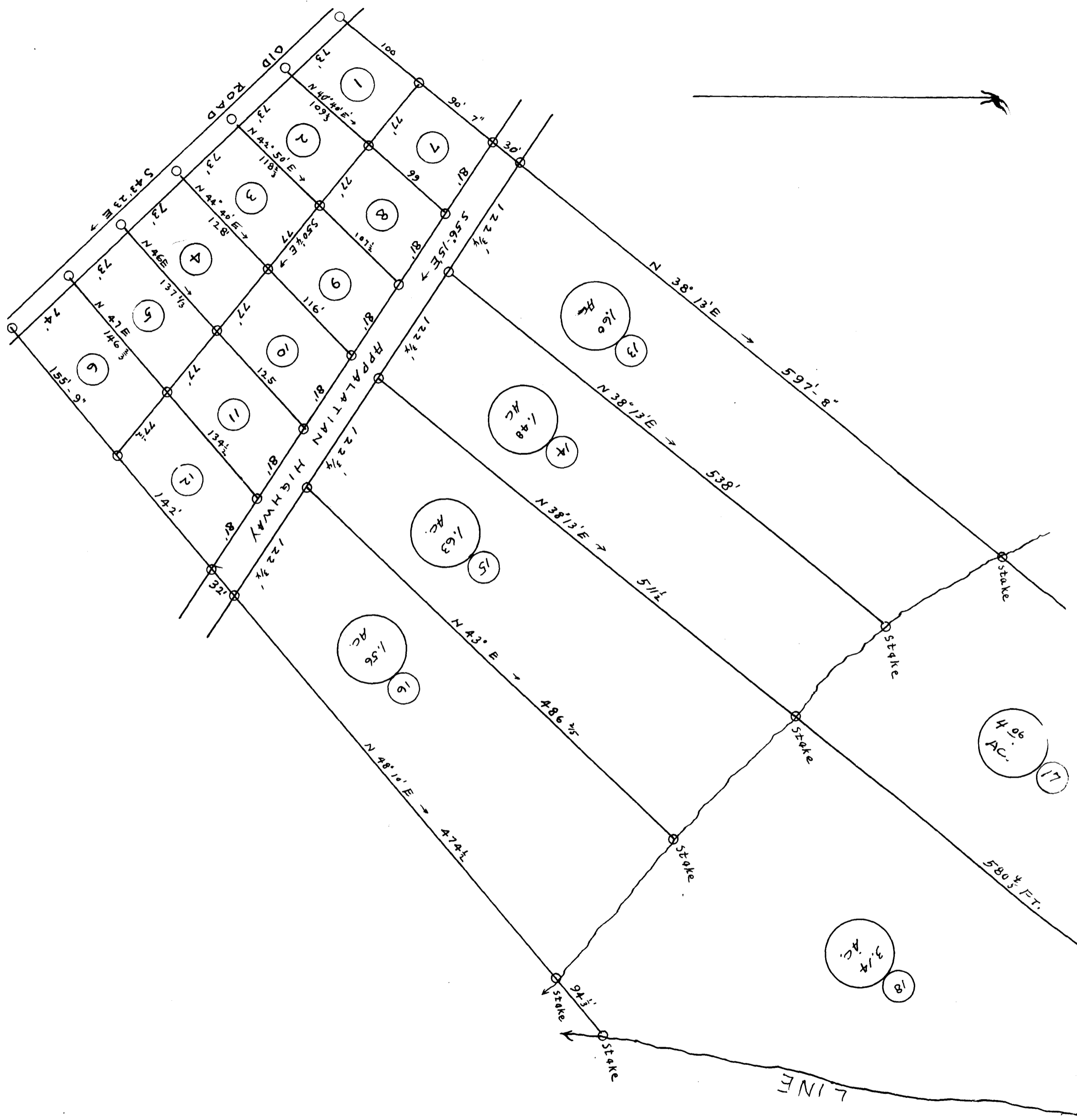


EX PARTE  
C.C. RAINES



THE C. C. RANES PROPERTY

SUB-DIVIDED

SITUATED NEAR INMAN MILLS, S.C.

SURVEYED FOR

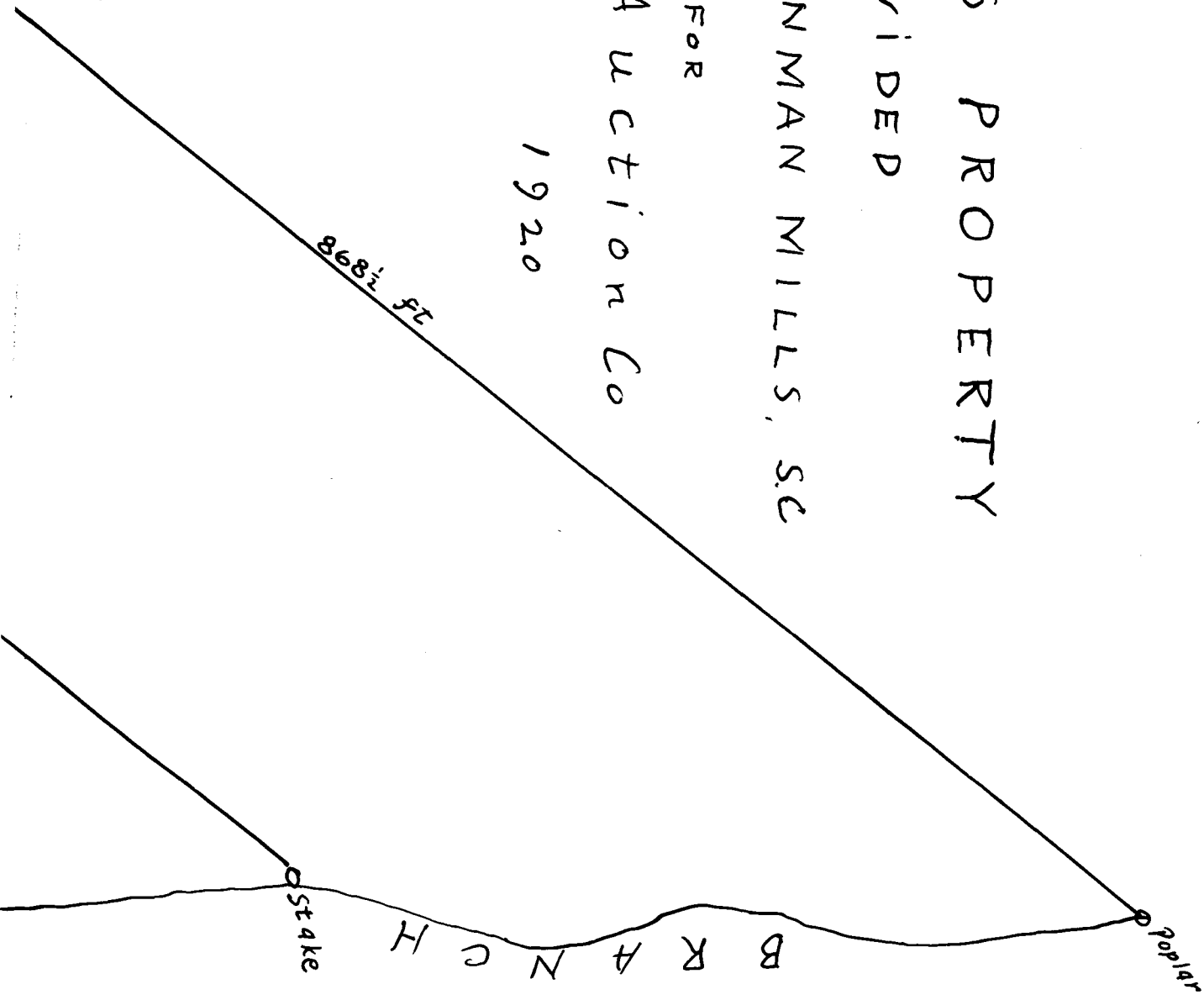
Piedmont Land Auction Co

Aug. 29

1920

Scale 1 inch = 80 Feet

J. H. Atkins  
Surveyor



Registered, Certified & Examined Oct 23, 1920