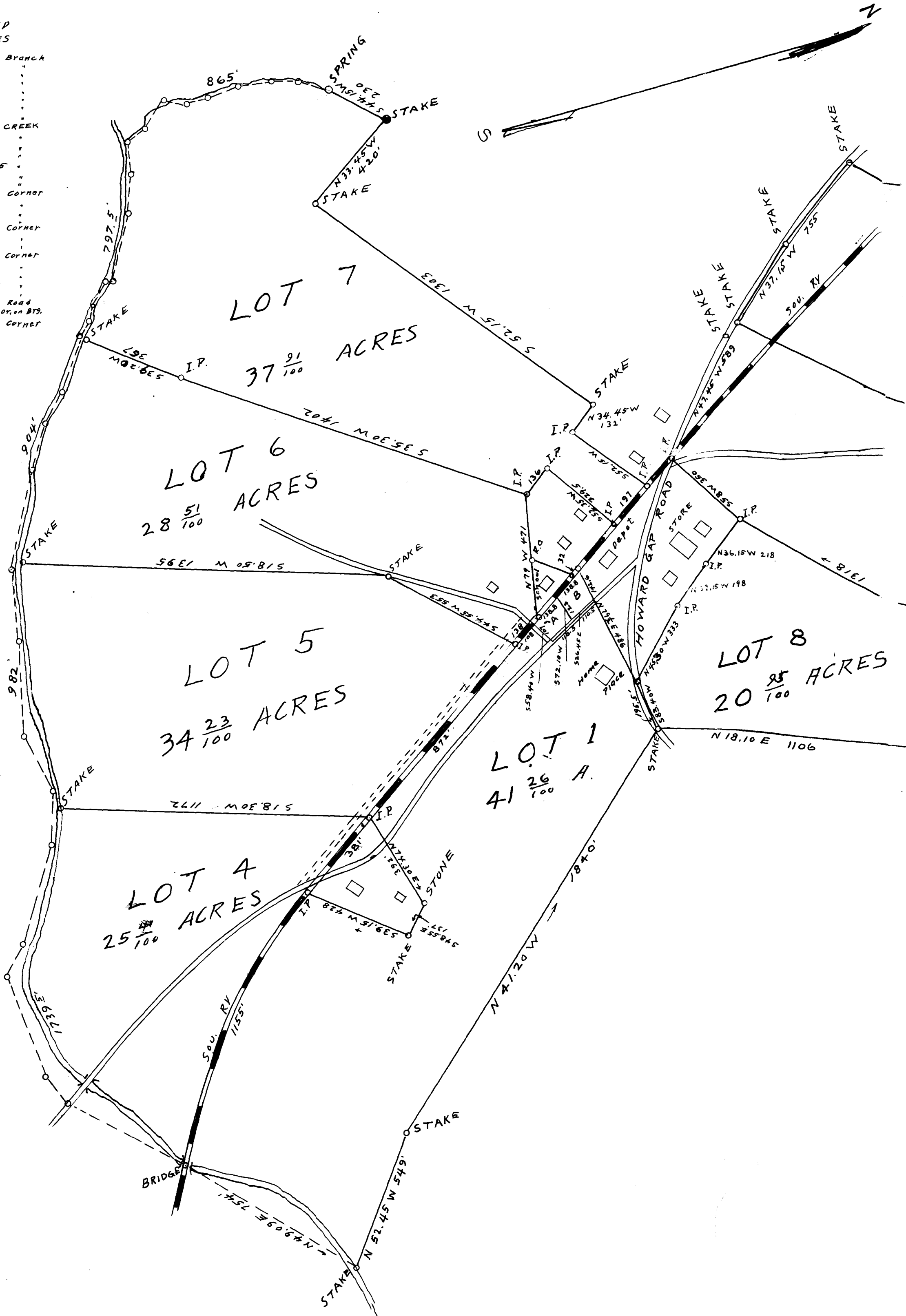
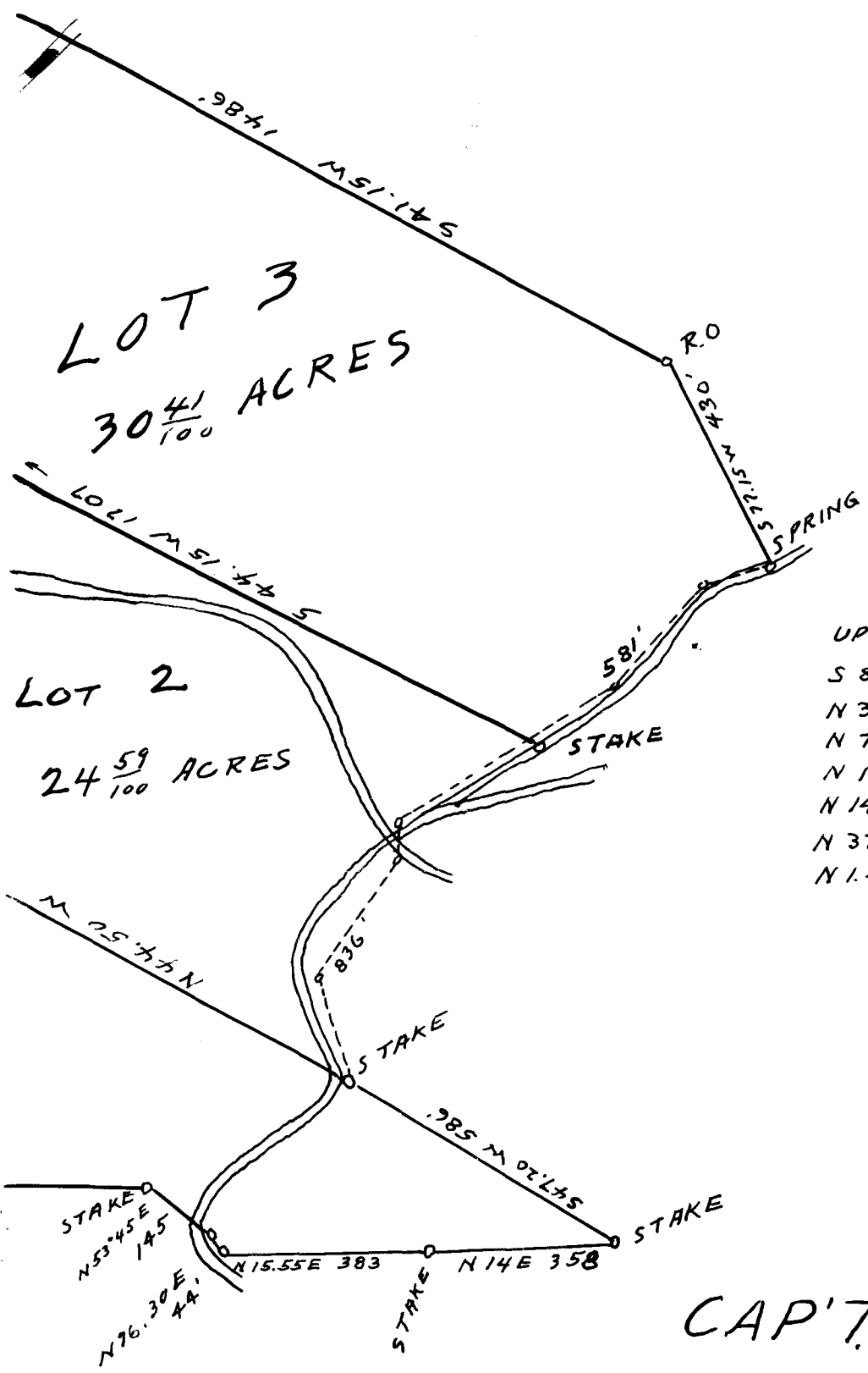


EX PARTE  
G. N. BROOM

BRANCH AND  
CREEK LINES

S 31.25 W	120	Branch
S 16.35 W	107	"
S 8.10 W	128	"
S 4.35 E	126	"
S 0.45 W	82	"
S 22.45 W	91	"
S 38.25 E	83	"
S 42.50 E	61	"
S 23.45 E	77	CREEK
S 78.15 E	126	"
S 68.25 E	149	"
S 59.45 E	270	"
S 17.50 E	24.5	"
S 47.15 E	99	"
S 60.55 E	65	"
S 44.20 E	64	Corner
S 53.45 E	224	"
S 44.50 E	136	"
S 58.10 E	184	"
S 61.40 E	360	Corner
S 78.34 E	303	"
S 76.40 E	369	"
N 79.50 E	310	Corner
S 72.35 E	145	"
S 57.20 E	397	"
S 44.25 E	141.5	"
N 84.55 E	416	"
N 69.30 E	122	Road
N 45.20 E	518	Cor. on BTB
N 49.09 E	754	Corner





UP CREEK & DITCH  
 S 88.00 W 208'  
 N 37.45 W 268'  
 N 76.50 W 70'  
 N 14.45 W 282' cor  
 N 14.45 W 198  
 N 37.30 W 244  
 N 1.40 E 139 Spring

SUBDIVISION  
 OF THE  
 CAP'T. G. N. BROOM PLACE  
 AT  
 CAMPTON, S.C  
 FOR  
 PIEDMONT LAND AUCTION CO.  
 L.B. METCALF, MGR.

Scale 1" = 300'  
 Sept. 11, 1920

Ladshaw & Ladshaw, Engrs.

Total 243 <sup>77</sup>/<sub>100</sub> Acres  
 Lots "A" + "B" = <sup>7</sup>/<sub>10</sub> of an Acre

Registered, Certified & Examined Oct. 1, 1920