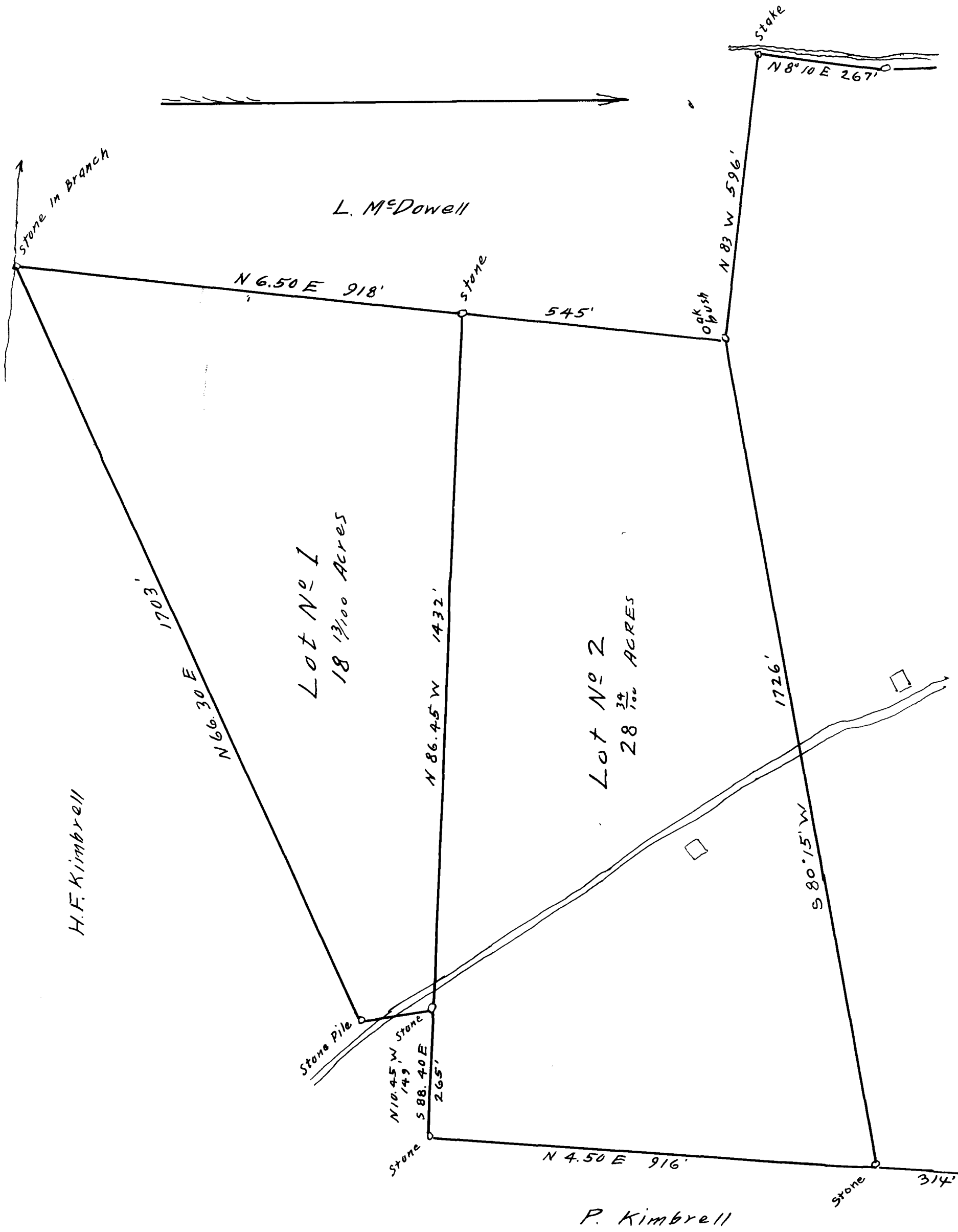
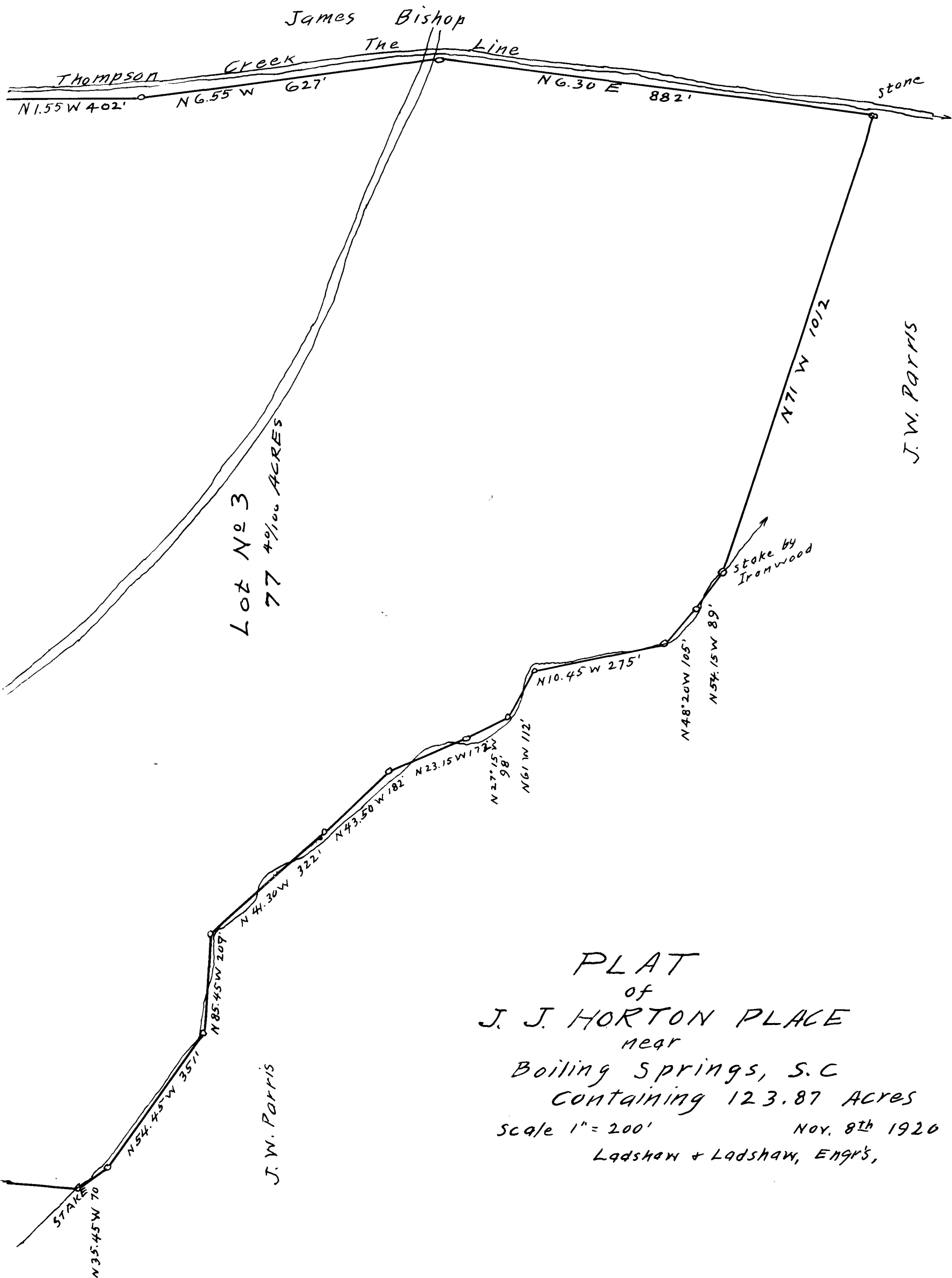


EX PARTE  
5 J. J. HORTON





Lot No 3  
77 4/100 ACRES

J. W. Parris

J. W. Parris

PLAT  
of  
J. J. HORTON PLACE

near  
Boiling Springs, S. C  
containing 123.87 Acres

Scale 1" = 200'      Nov. 8th 1920  
Ladshaw & Ladshaw, ENGRS,

Registered, Certified & Examined Dec 10, 1920