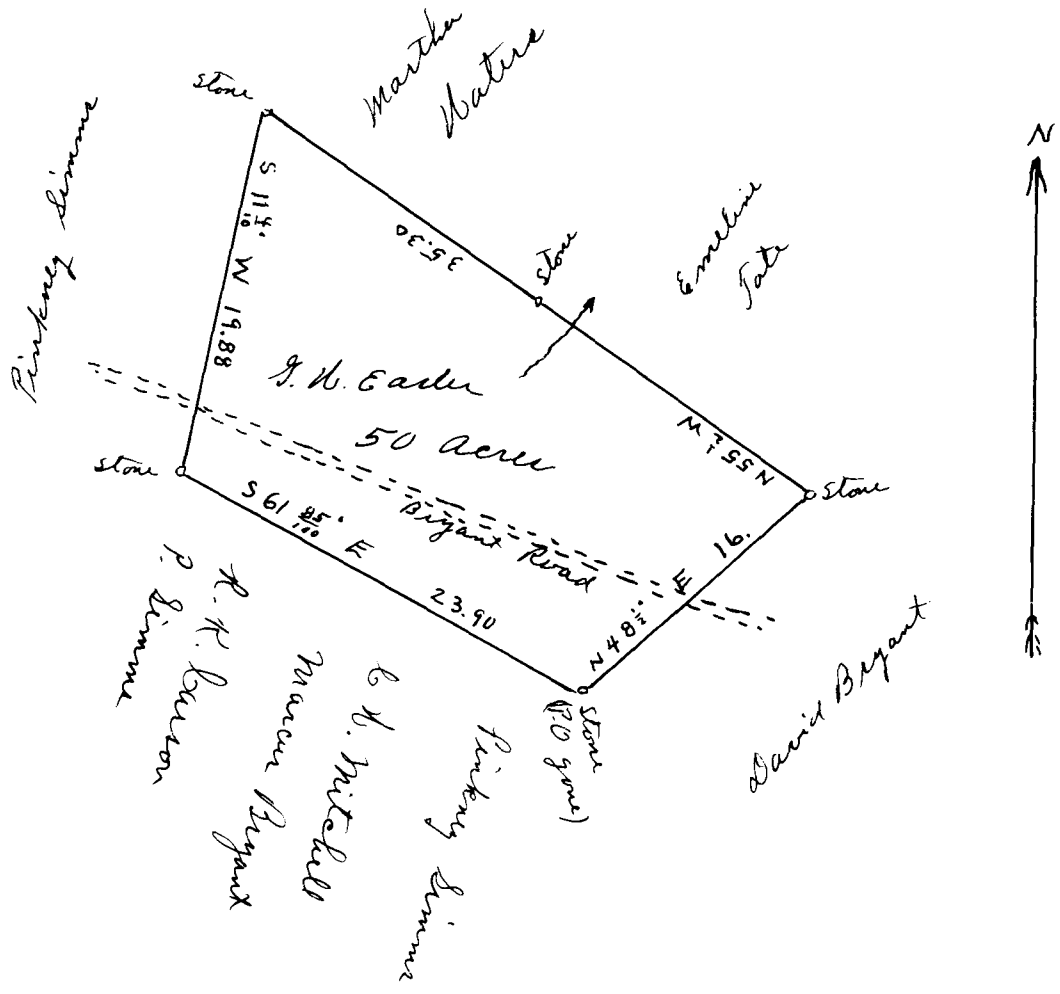


EX PARTE

DR. E. F. BELL

Scale - 10 chains per inch



Spartanburg County, S. C.

The above plat correctly represents the land of George W. Easter, situate in said State and County, lying on both sides of the Bryant Road, containing fifty acres & having such form marks and boundaries as are above shown.

Surveyed by me Nov. 22<sup>d</sup> 1892

J. E. Johnson  
Surveyor

Registered, Certified & Examined Feb 8-1921