

EX PARTE  
ELLIS MCKINNEY ESTATE

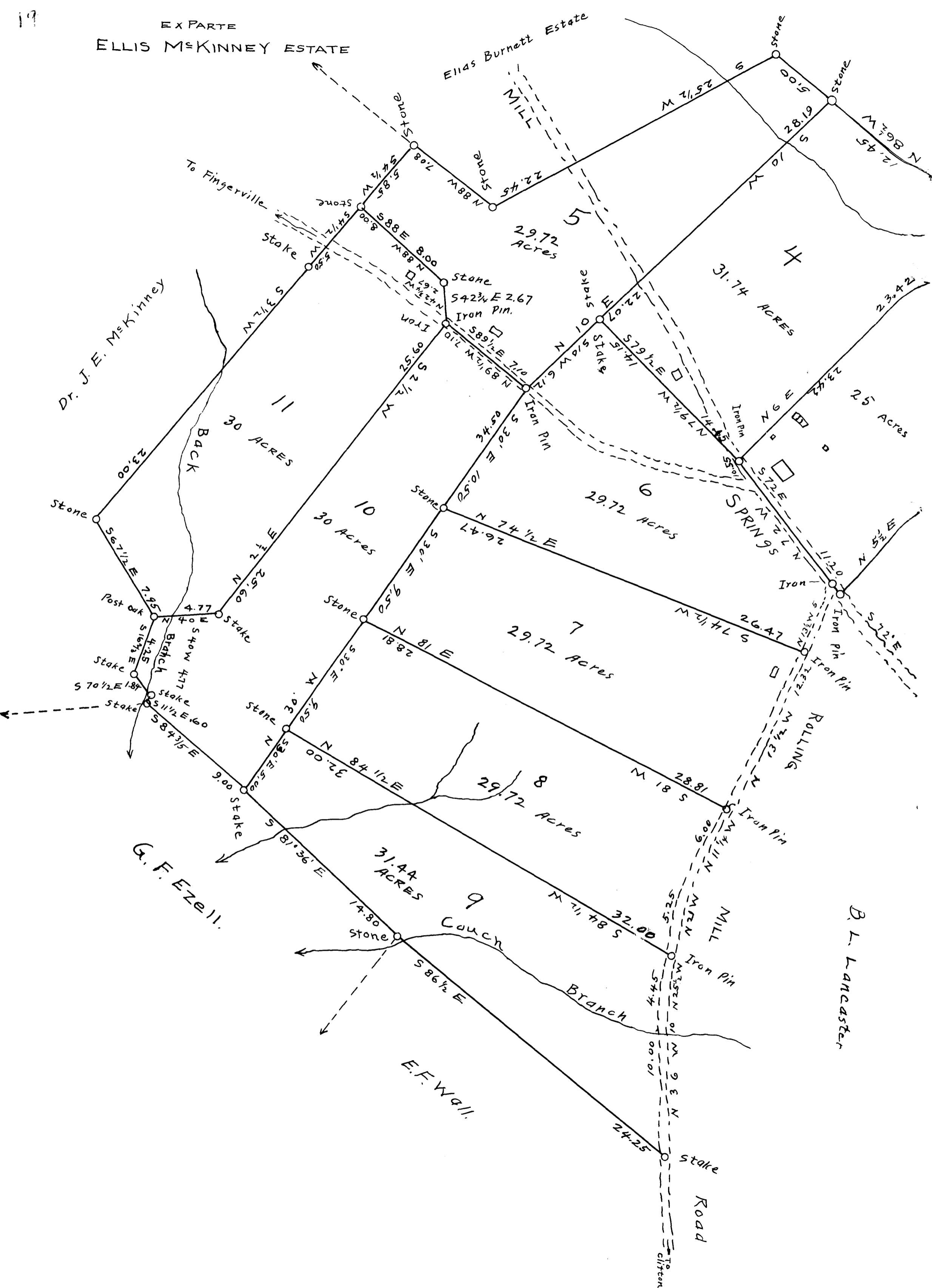
Elias Burnett Estate

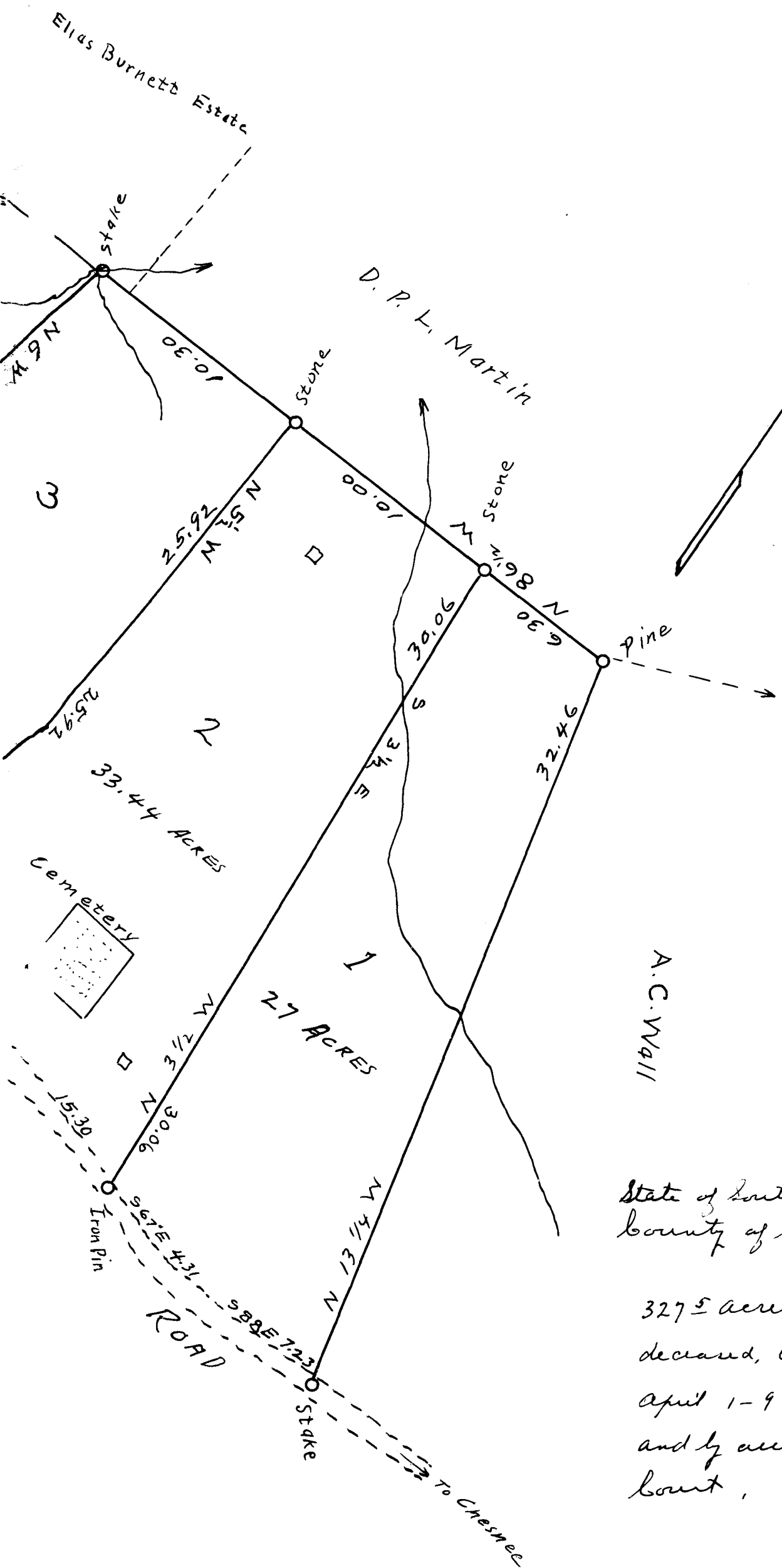
Dr. J. E. McKinney

G. F. Ezell

E. F. Wall

B. L. Lancaster





Scale, 5 chains per inch.

State of South Carolina } Court of Common Pleas  
 County of Spartanburg } { Helia McKinney, et al  
 vs  
 Ellison McKinney, et al

327 ± acres. The above map represents the Ellis McKinney, deceased, Estate. Re-surveyed, and sub-division made by me, April 1-9<sup>th</sup>, 1921, at request of M.D. McKinney, Administrator, and by authority of His Honor, S.P. Lamborn, Master, Equity Court.

John B. Cask, Surveyor.

Registered, Certified & Examined April 13-1921