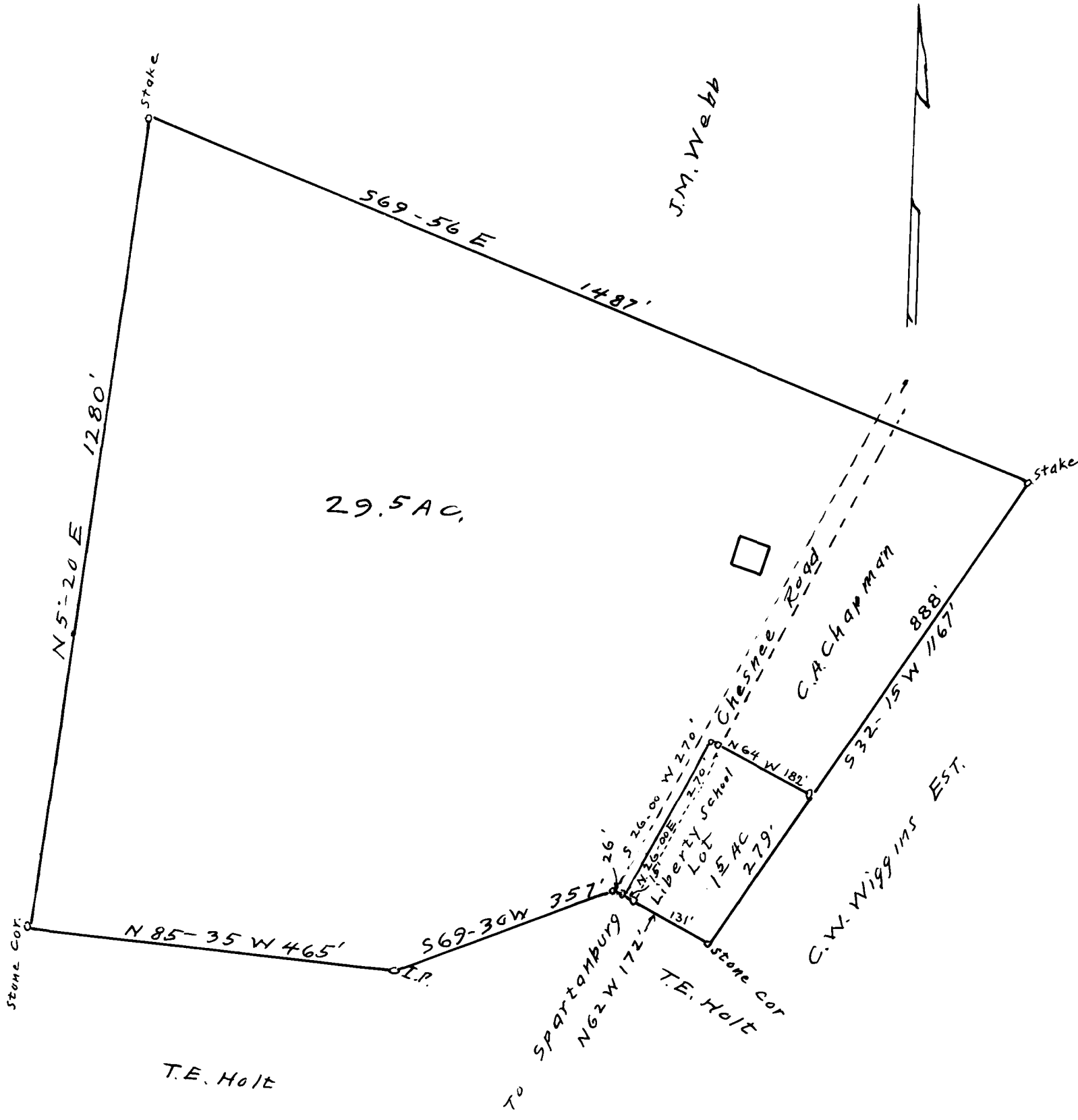


EX PARTE
CARL CHAPMAN



PROPERTY OF
CARL A. CHAPMAN
 NEAR
 LIBERTY SCHOOL
 SPARTANBURG COUNTY, S.C.
 PART OF THE A.C. REID PLACE
 Scale 1" = 200
 R.W. Martin
 APR 18, 1921
 W.N. Willis - Civ. Engr.
 Spartanburg, S.C.

Registered, Certified & Examined April 20-1921