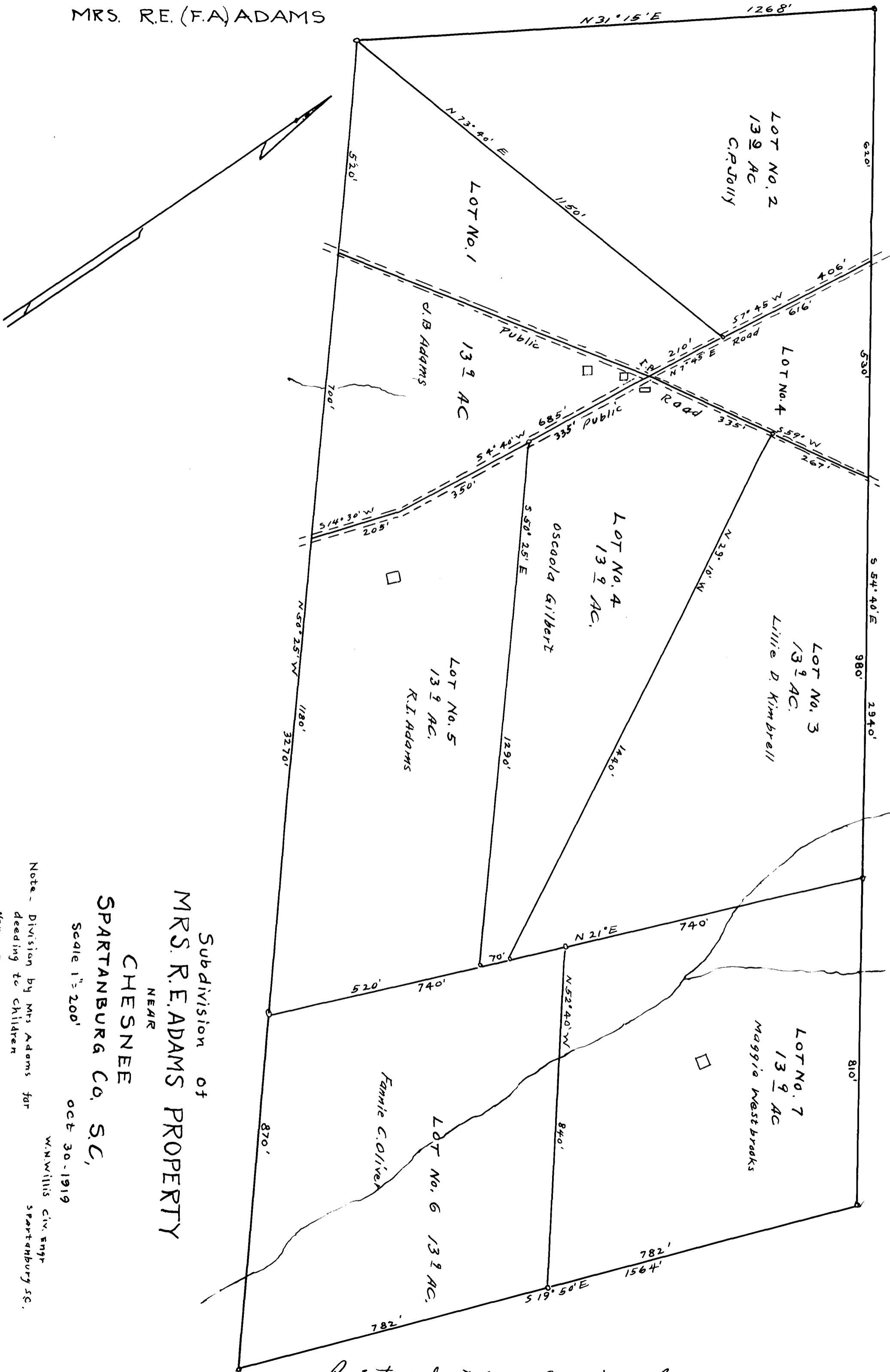


EX PARTE
MRS. R.E. (F.A.) ADAMS



Subdivision of
MRS. R.E. ADAMS PROPERTY

NEAR
CHESNEE
SPARTANBURG CO. S.C.,

Scale 1" = 200' OCT 30. 1919

Note - Division by Mrs Adams for
deeding to children
Names Revised 9-19-21
W.N. Willis Civ. Engr
Spartanburg S.C.

Registered, certified & Examined September 20, 1921