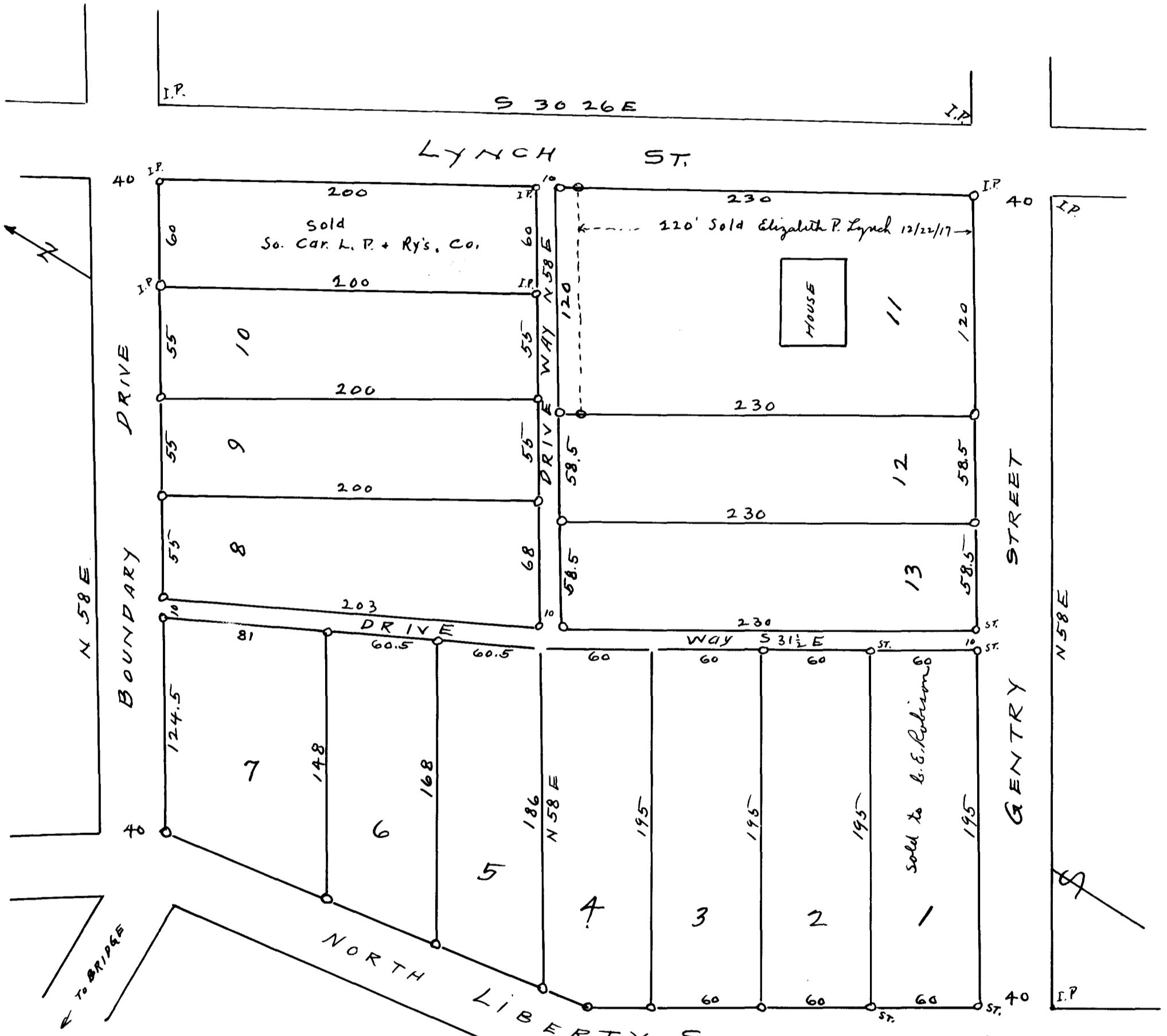


EX PARTE
L. E. C & ELIZABETH LYNCH



SUB-DIVISION OF
PROPERTY BELONGING
TO L. E. C. LYNCH & ELIZABETH LYNCH
LYING ON NO. LIBERTY STREET SPARTANBURG, S. C.
SCALE 60' = 1"

Surveyed by L. P. Epton, 1920

Registered, certified & Examined Sept. 22-1921