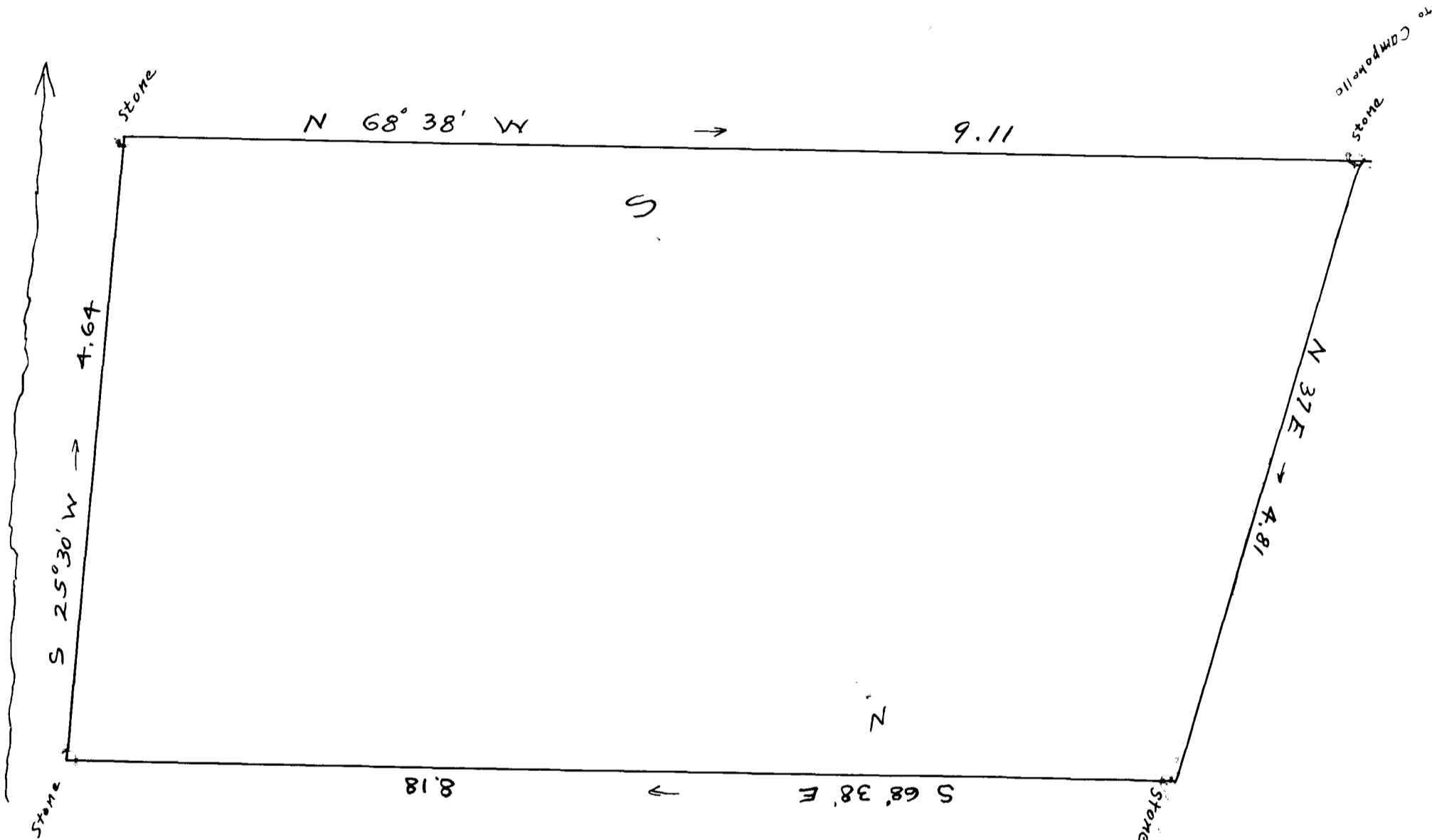


36

EX PARE
 VICTOR SCHOOL DISTRICT NO 55



Survey + Plat

Victor School House Lot

Situation

Victor School District, Spartanburg County, S. C.
 cut and laid from land belonging to the Estate
 of G. W. Dorman, deceased by direction of F. F. Foster.
 G. G. Dorman and J. G. Greenway, trustees of said
 Victor School District. This April 12, 1921

J. H. Atkins, Surveyor

Registered, Certified + Examined October 8th 1921