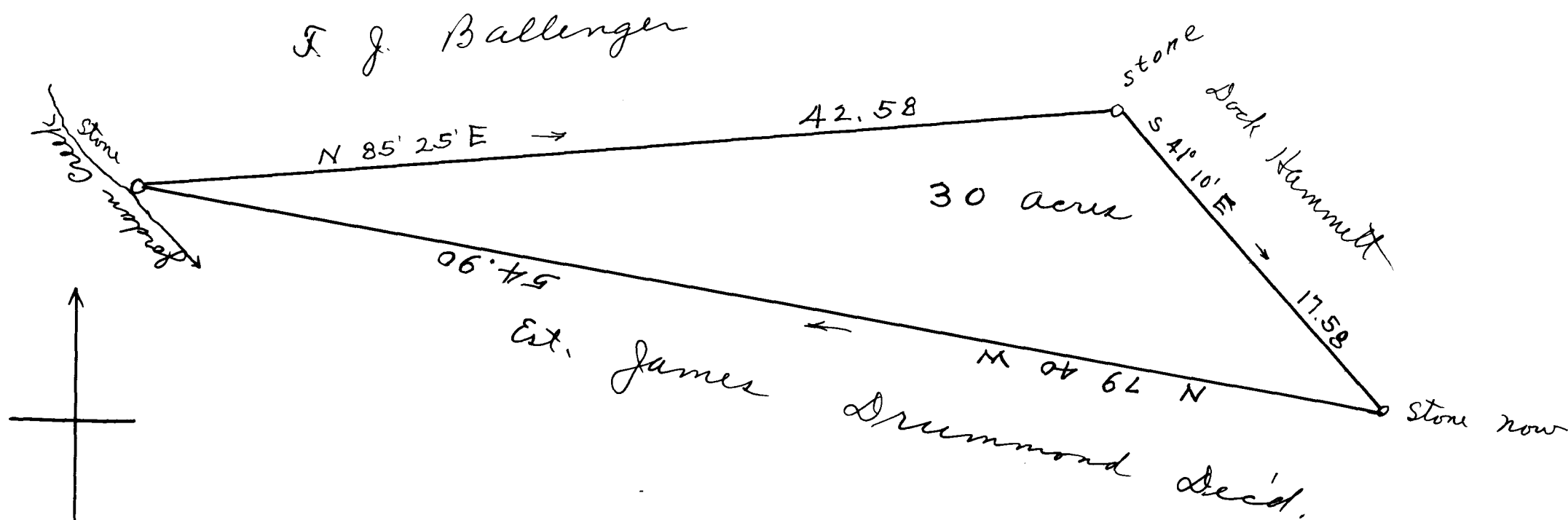


EX PARTE
JIM DRUMMOND EST.
T. J. BALLENGER



Surveyed & but off for F. J.
Ballenger from the Estate lands
of Jim Drummond Dec'd.
Situating three miles southwest
Inman, S. C.

Nov. 7-1921

Scale: 1 inch = 6 chains

J. H. Atkins
Surveyor

Registered, Certified & Examined Feby. 3-1922