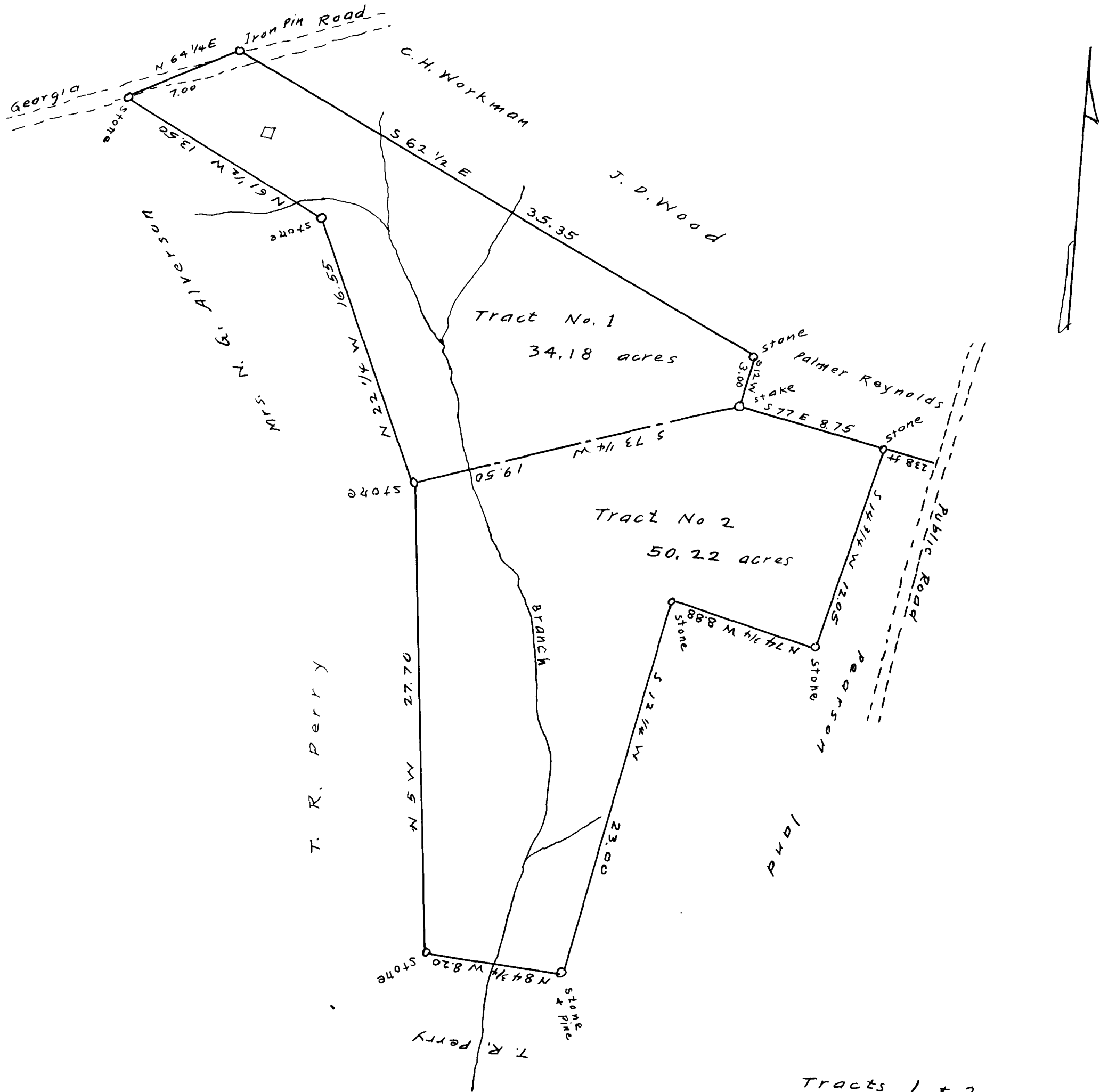


52

EX PARTE
N. G. ALVERSON ESTATE



Tracts 1 + 2
of the
N. G. ALVERSON ESTATE
Located near Cashville, S.C.

Scale: 6 ch. = 1 in
Surveyed
Nov. 20, 1921
Paul H. Anderson
Civil Engr.

Registered, Certified & Examined February 3-1922