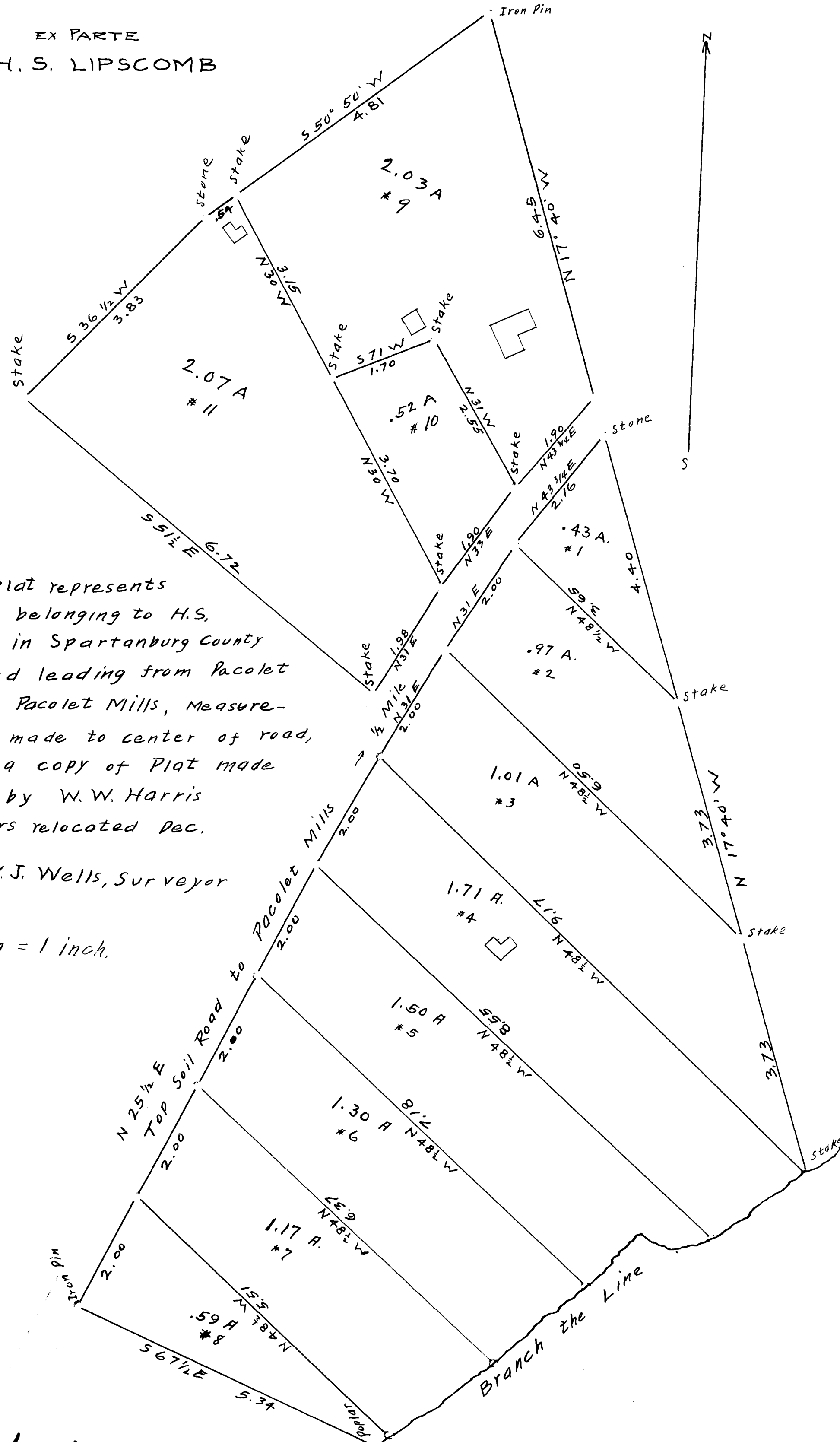


57

EX PARTE  
H. S. LIPSCOMB



This plat represents  
lots of land belonging to H.S.  
Lipscomb in Spartanburg County  
S.C. on road leading from Pacolet  
Station to Pacolet Mills, Measure-  
ments are made to center of road,  
this being a copy of Plat made  
Dec. 1913 by W.W. Harris  
Corners relocated Dec.  
27, 19 21,  
By W.J. Wells, Surveyor

Scale 1/4 ch = 1 inch.

Registered, Certified & Examined February 13-1922