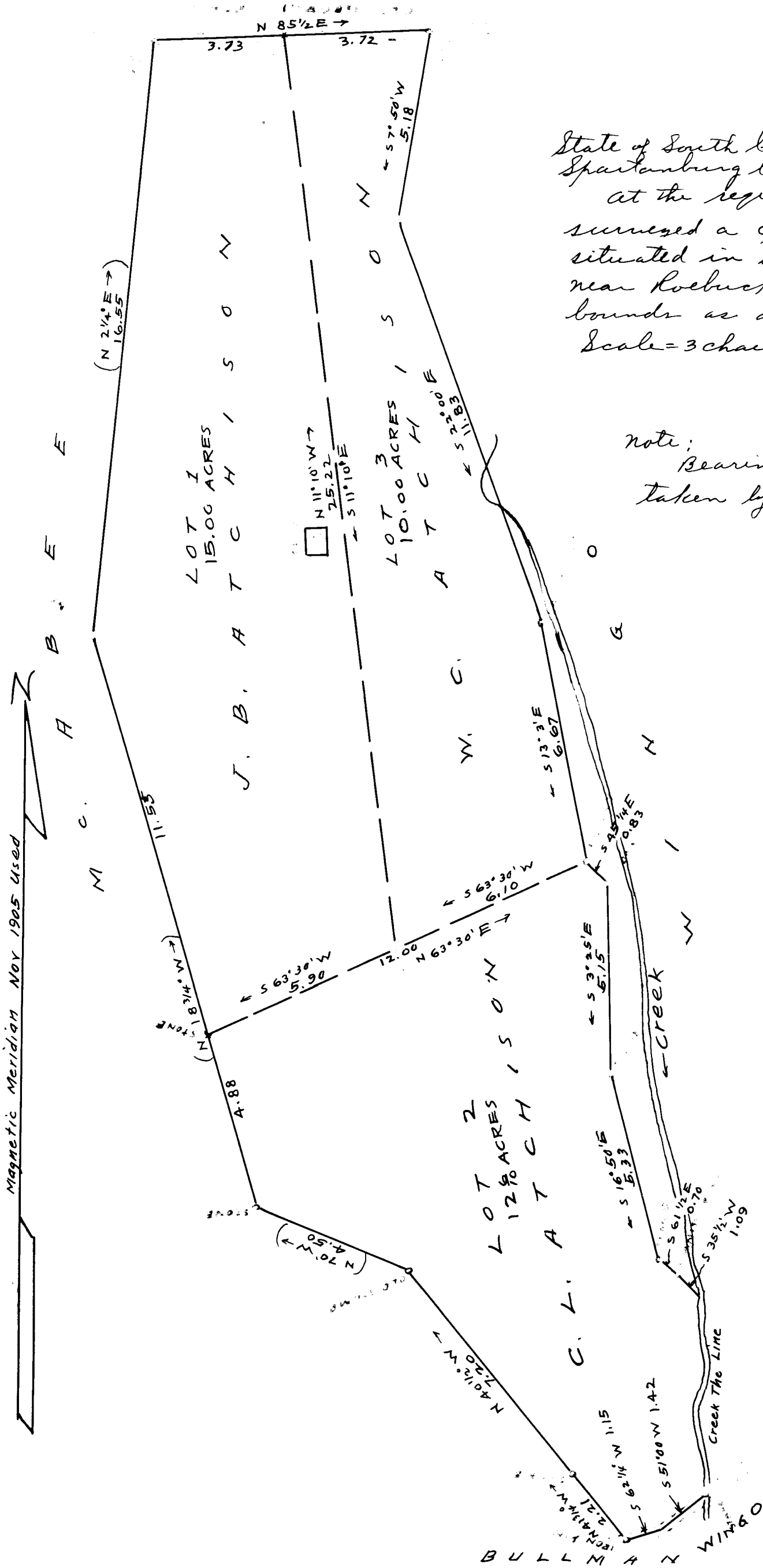


60

EX PARTE
 C.A. WINGO
 C.L.; J.B. & W.C. ATCHISON



State of South Carolina
 Spartanburg County
 at the request of C.A. Wingo, I have surveyed a certain tract of land situated in State and County aforesaid near Roebuck, having such meter and bounds as annexed plat represents.
 Scale = 3 chains per inch.

Nov. 20th 1905

P. H. Foster, C.E. & Engr.

note:
 Bearings and distances in () were taken by A. Madole in 1902

NOTE
 SUBDIVISION LINES RUN DEC. 1917
 BY H. STRIBLING, C.E.
 Magnetic Meridian Nov. 1905 Used

Registered, Certified & Examined February 21-1922