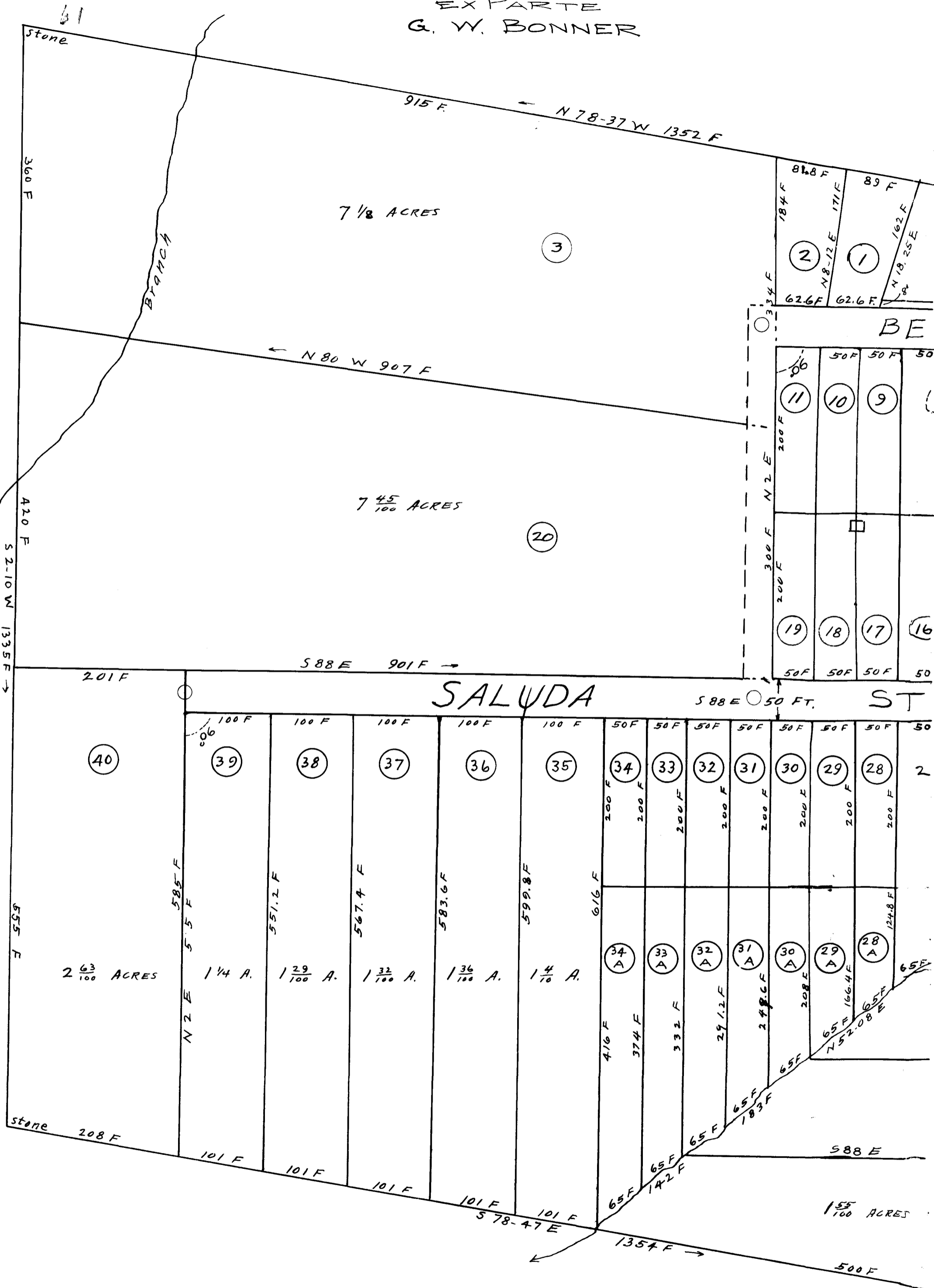


EX PARTE  
G. W. BONNER

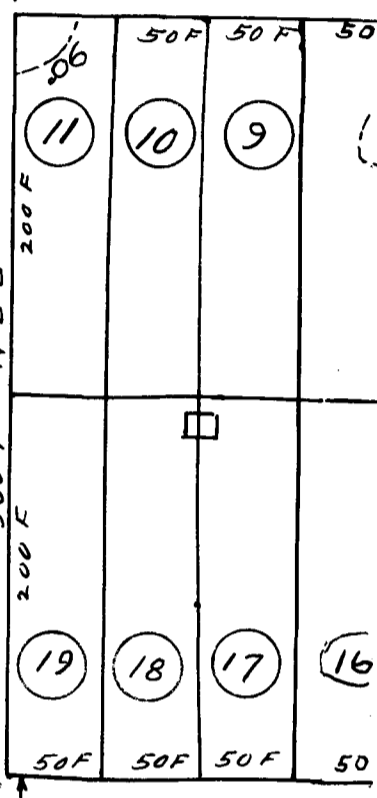
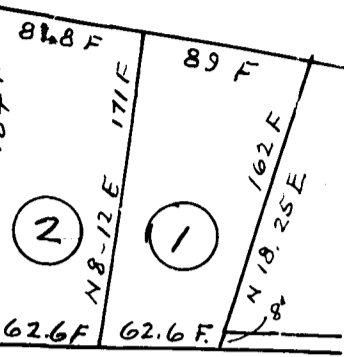


7 1/8 ACRES

7 45/100 ACRES

SALUDA

ST



2 63/100 ACRES

1 1/4 A.

1 29/100 A.

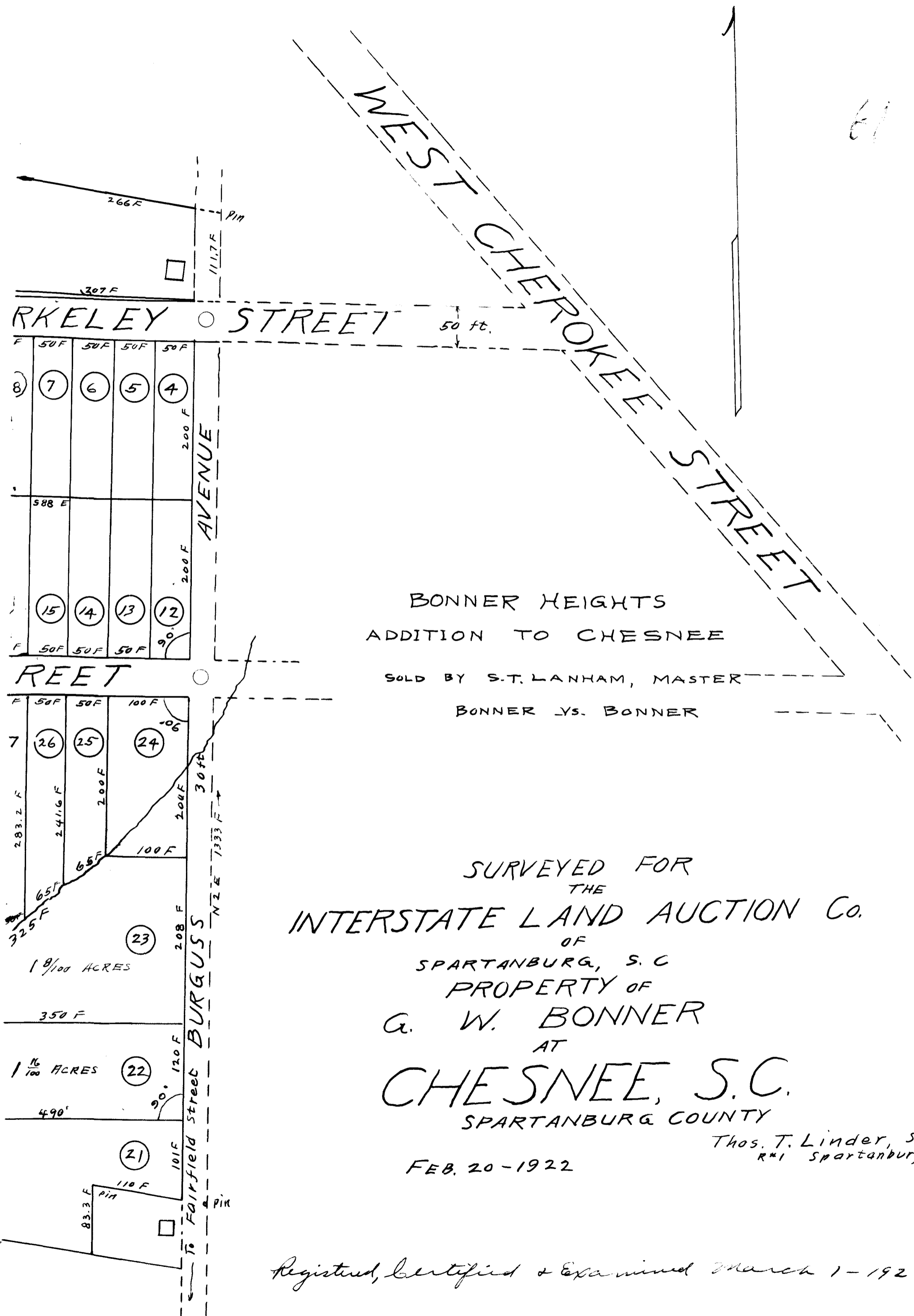
1 32/100 A.

1 36/100 A.

1 4/10 A.

155/100 ACRES

61



BONNER HEIGHTS  
ADDITION TO CHESNEE

SOLD BY S.T. LANHAM, MASTER  
BONNER VS. BONNER

SURVEYED FOR  
THE  
INTERSTATE LAND AUCTION Co.  
OF  
SPARTANBURG, S. C  
PROPERTY OF  
G. W. BONNER  
AT  
CHESNEE, S.C.  
SPARTANBURG COUNTY

FEB. 20 - 1922

Thos. T. Linder, Sur  
R#1 Spartanburg, S.C.

Registered, Certified & Examined March 1 - 1922