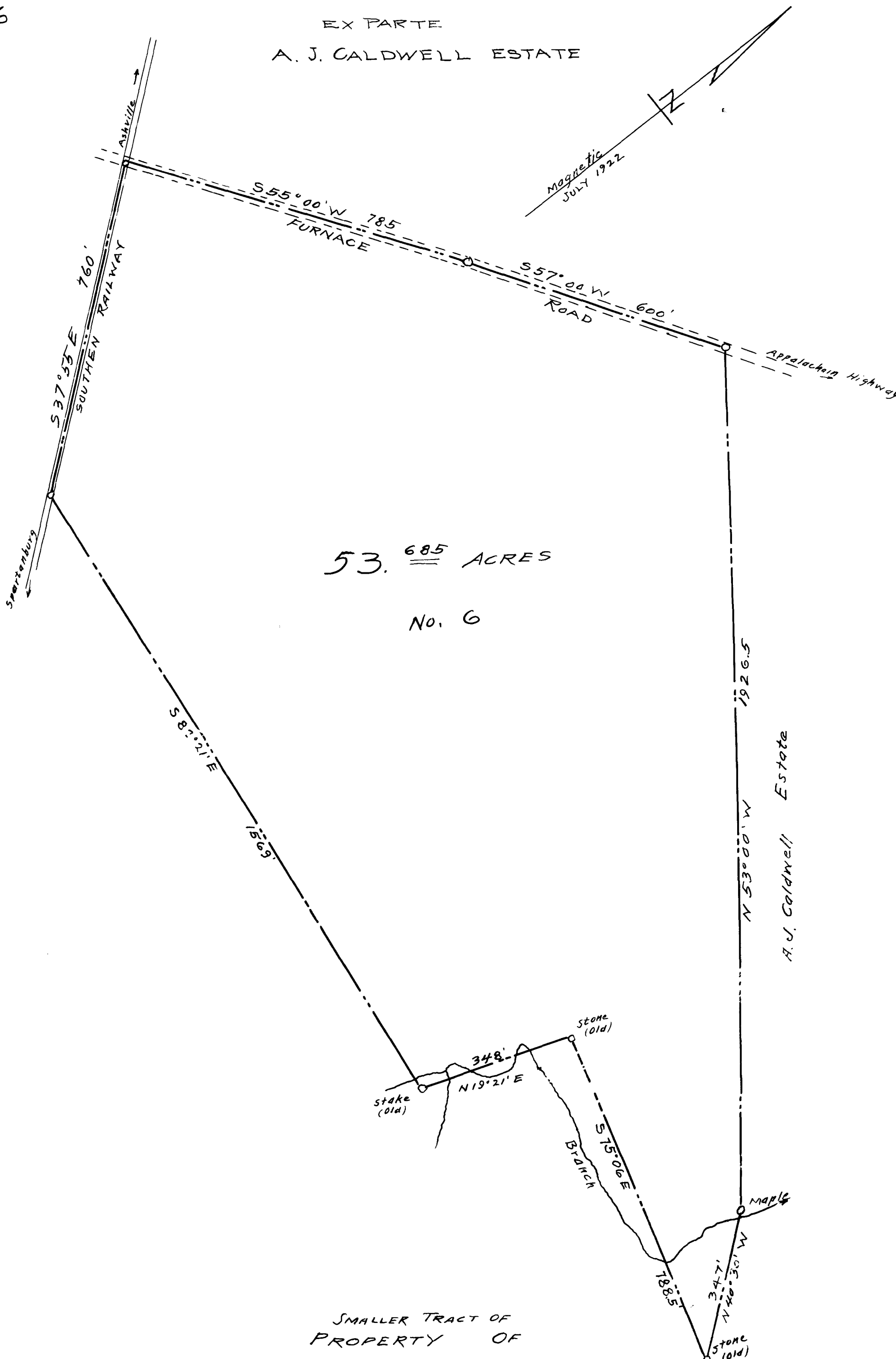


76

EX PARTE  
A. J. CALDWELL ESTATE



53. <sup>685</sup> ACRES  
No. 6

A. J. Caldwell Estate

SMALLER TRACT OF  
PROPERTY OF  
A. J. CALDWELL ESTATE  
NEAR SIGSBEE  
SPARTANBURG COUNTY, S.C.

July 1922

Scale:- 1" = 200'

Harwood Beebe  
Engineer

Registered, Certified & Examined August 12-1922