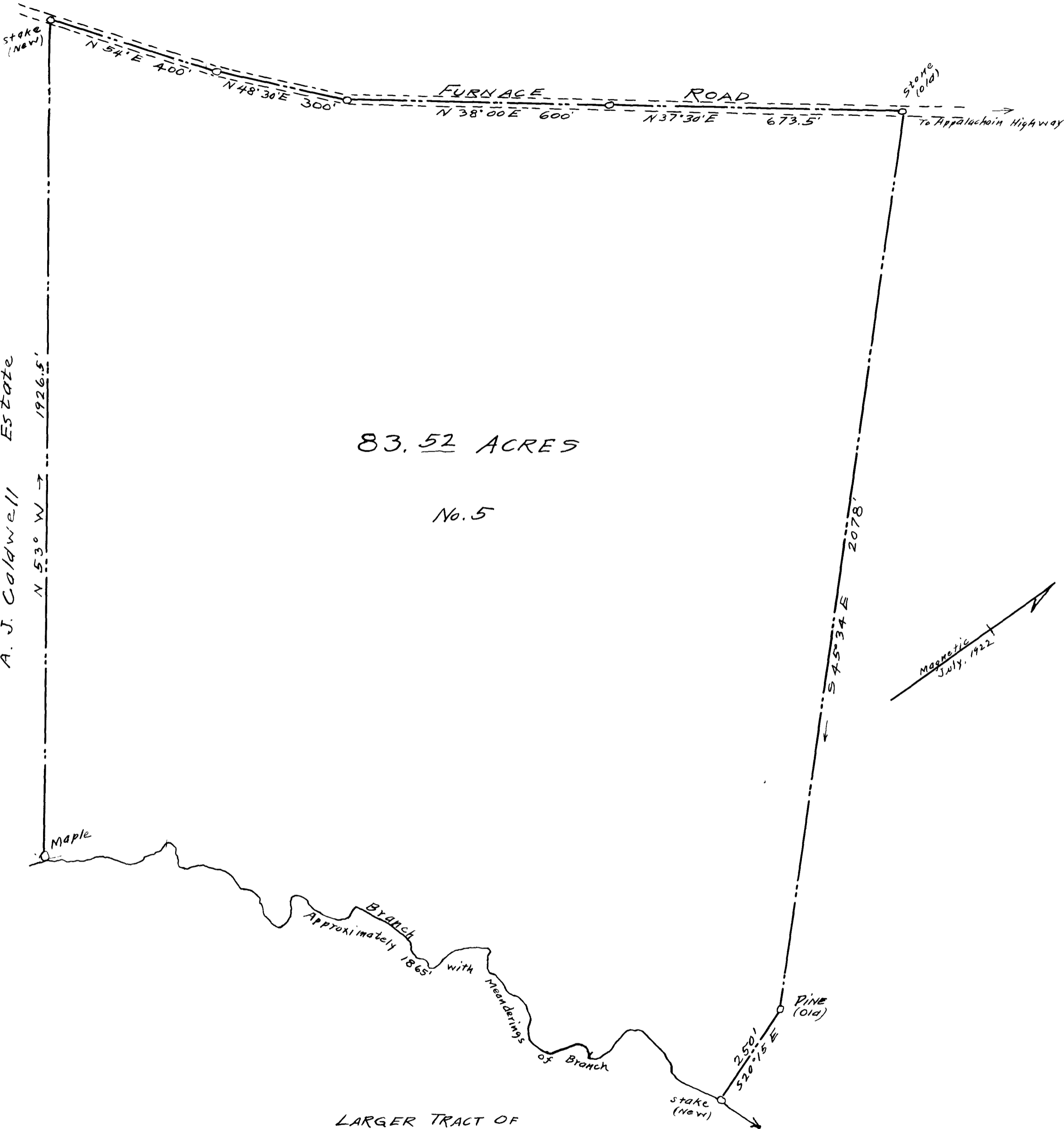


EX PARTE
A. J. CALDWELL ESTATE



83.52 ACRES
No. 5

LARGER TRACT OF
PROPERTY OF
A. J. CALDWELL ESTATE
NEAR SIGSBEE
SPARTANBURG COUNTY, S.C.

July, 1922

Scale = 1" = 200'

Harwood Beebe
Engineer.

Registered, Certified & Examined August 12, 1922