

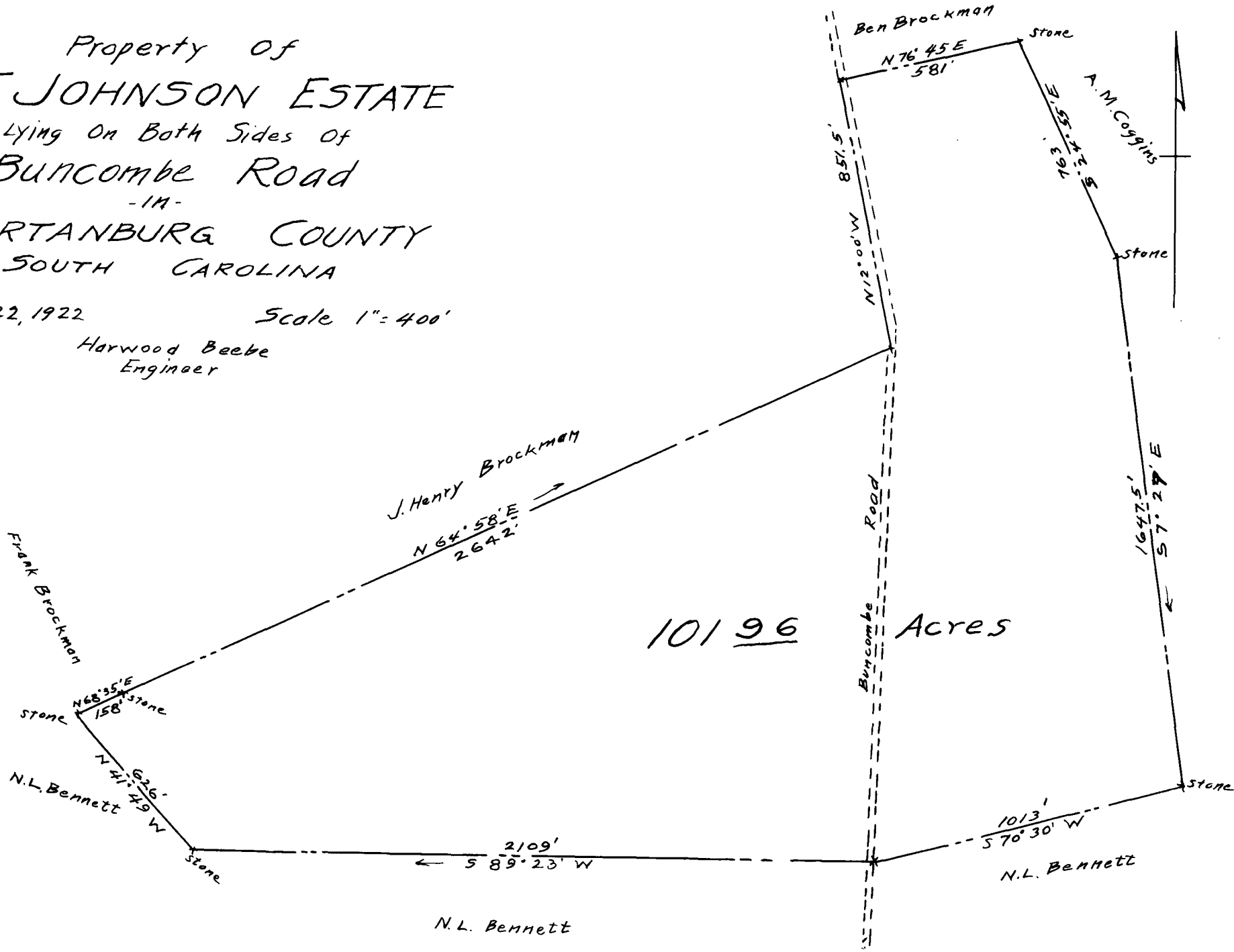
EX PARTE
SARAH A. JOHNSON

Property of
J. T. JOHNSON ESTATE
Lying On Both Sides of
BUNCOMBE ROAD
- 14 -
SPARTANBURG COUNTY
SOUTH CAROLINA

August 22, 1922

Scale 1" = 400'

Harwood Beebe
Engineer



Registered, Certified & Examined Sept. 11-1922