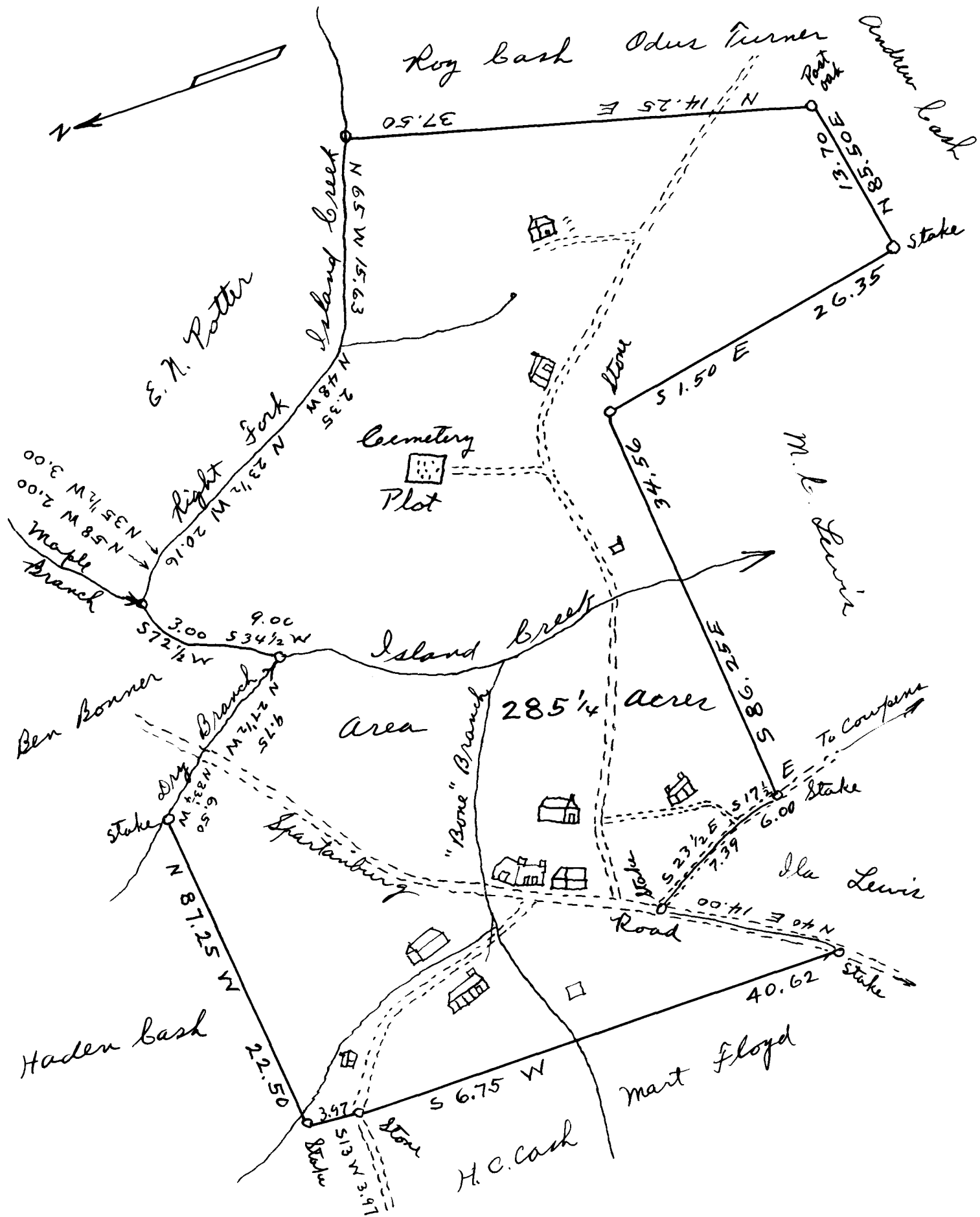


86

EX PARTE
J. H. PARRIS

Scale 10 chains per inch



State of South Carolina }
County of Spartanburg }

The above plat represents J. H. Parris trust of land in Cherokee Township, containing two hundred eighty five and one-fourth acres (285 1/4). The creek line and Dry Branch line, resurveyed by me July 21st 1922 at request of Mr. Parris.

John B. Bash
Surveyor

Registered, Certified & Examined Oct. 13, 1922